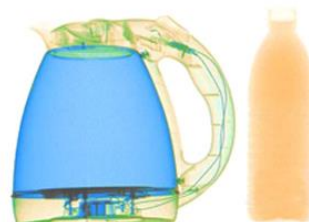
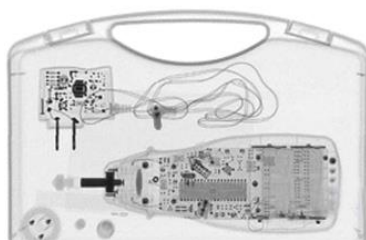


SPX-3025P portable X ray scanner



Technical characteristics

- ◆ Dimensional imaging, accurate display of dangerous goods location and internal structure
- ◆ Dynamically capture images, support playback of dynamic video
- ◆ Scanning images are clear, the resolution is high and the imaging speed is fast. Use CCD industrial camera;
- ◆ High capacity battery life, meet the field operations
- ◆ Super software features: easy to achieve multi-touch gestures, physical size measurement, continuous image zoom, multi-effect image processing
- ◆ Security upgrades: provides X-ray delay and safety protection to ensure operator safety
- ◆ Modular design, easy maintenance



Wire resolution	40AWG (dia 0.787mm copper)
Penetration	20mm steel/150mm aluminum
Image station	Lenovo Flex3-14, touch screen 14.0 inches; HD LED 1366 * 768 resolution; windows 8 operating system; intel core i5-6200U; 4GB memory; 500GB hard drive; weight 1.85kg
Sensor type	Industrial CCD camera
Imaging array	1280*960 resolution
Effective imaging area	304.8*252mm
data communication	Wired transmission
Image acquisition time	1-2s
X ray tube voltage	100kv (120kv optional)
X ray source current	1mA
X ray source weight	9kgs
Image processing	Edge enhancement, super penetration, local enhancement, histogram equalization, anti-color display, black and white display, pseudo-color display, relief display.
Area selection and enlargement	Unlimited continuous magnification
Storage capacity	At least 10000 images
Image display	Support dynamic images
System function	Date / time display, historical image preview, user management, image storage and retrieval, emergency stop operation, device status display.
Outline Dimensions	X ray generator : 482*215*178mm (L*W*G) Detection board : 462*366*164mm (L*W*G)
Total weight	15kgs
Operating temp.	-15°C~+50°C
Storage temp.	-40°C~+70°C
Battery	Rechargeable lithium ion battery (Supports 400 image captures)
Other function(optional)	Print the image and connect network