



PRISON JAMMER

The Mobile Signal Jammer can help to block the mobile signals for any area that are confronted with cellular communication problems: for example, loud incoming call rings, loud telephone conversations, secret leaking and bomb explosion through Mobiles, electromagnetic radiation to gas station, chemical material warehouse and hospital equipment.

This product is suitable for executive offices, board meetings, conferences, seminars, libraries, cinemas, religious places, public transport, concert halls, restaurants and educational institutions, Prisons, etc.

Mobile Signal Jammer transmits strong power radio signals to cut-off communications between Mobile and cellular base-stations, effectively disabling mobile phones within shielding range of the jammer, preventing them from receiving signals and from transmitting signals.

Upon activating Mobile Signal Jammer, all idle phones will indicate "NO SERVICE". Incoming calls are blocked as if the cellular phone were OFF.

When Mobile Signal Jammer is turned off, all cellular phones will automatically re-establish communications and provide full service.

PRISON JAMMER

Outdoor High Power Mobile Signal Jammer

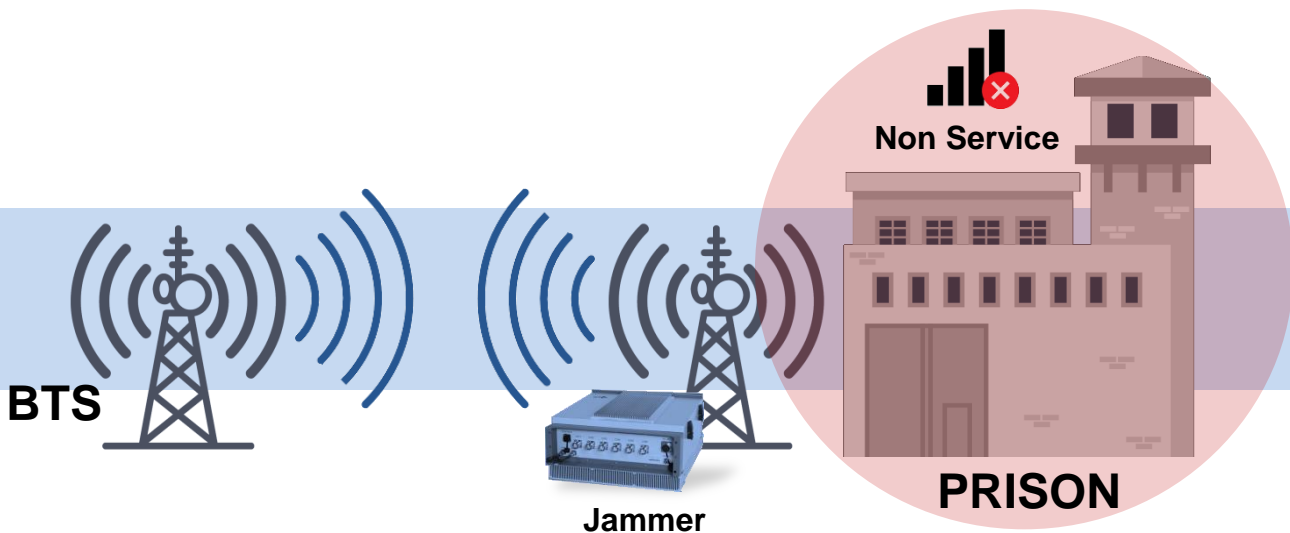
Prisons and other large sensitive locations such as military or government buildings, etc

IAJ5-500-56



FEATURES

- Aluminum - Alloy casing with IP65 protection for high resistance to dust, water and corrosion
- Special technology to prevent interference between each frequency band
- Only interfere downlink frequency of mobile system, without disturbing normal working of Base Stations
- Broadband segment coverage jamming all wireless signals: 2G, 3G, 4G, WiFi, Bluetooth and GPS
- Each frequency band controlled by independent RF ON/OFF switches
- High performance heat sink, to ensure long-term use of the equipment
- Easy operation and installation



PRISON JAMMER

Outdoor High Power Mobile Signal Jammer

Prisons and other large sensitive locations such as military or government buildings, etc

IAJ5-500-56



SPECIFICATIONS

Jamming Systems (Customized)	2G/3G/4G/WiFi/Bluetooth/GPS				
Output Ports	LTE800 GSM/UMTS/LTE900 DCS/LTE 1 800 UMT S/LTE2 1 00 LTE2600				
Jamming Frequencies	791-821MHz 925-960MHz 1 805- 1 880MHz 21 10-2170MHz 2620-2690MHz				
Composite Output Power	800 MHz	900 MHz	1800 MHz	2100 MHz	2600 MHz
	50dBm/100W				
Total RF Output Power	500W				
Power Adjustable	Power Adjustable on Each Band Independently				
Jamming Radius	Up to 100 Meters / Related to the Wireless Environment of Target Area				
Connector Type	SPCS DIN-Female				
Power Supply (Customized)	AC220V				
Power Consumption	1600W				
Weight	60kg (including brackets)				
Operation Temperature Range	-20°C - + 50°C				
Dimensions	615x590X270 mm				
Application	Indoor or Outdoor(IP65)				
Installation	Fixed installation (Pole or Wall Installation)				
Accessories	5 PCS Jumpers and 6Ports Antenna Are Needed				

TILT ANTENNA

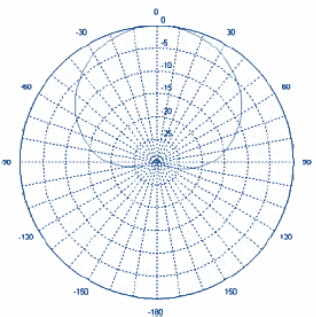
AT06261765X6E1

Electrical Parameter

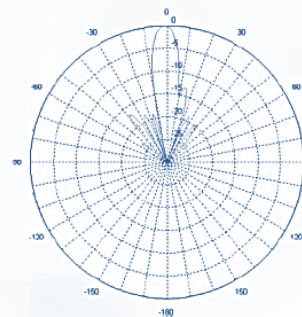
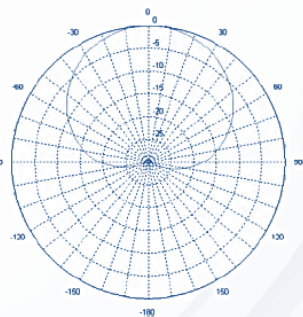
Frequency Range (MHz)	698-824/824-960/1710-1850/1850-2200/2300-2690
Gain(dBi)	14/15/17/17/17
Horizontal Beam Width (3dBX)	69±6/65±6/69±6/65±6/60±6
Vertical Beam Width(3dB)	13/11.5/8/7/5.5
Electrical Downtilt	0-10
VSWR	<=1.5:1
Isolation between Ports (dB)	>=28
Cross Polarization Ratio (dB)	>=15; ±60°>=10
Upper Sidelobe Suppression (dB)	N/A
Null-Fill(dB)	N/A
Front to Back Ratio (dB)	>=25
Polarization	±45°
Input Maximum CW Power (W)	300
PIMD 3th	<=150dBc (@2x20W)
Impedance(Ω)	50
Input Connector	6K7/16DIN female

Other Parameters

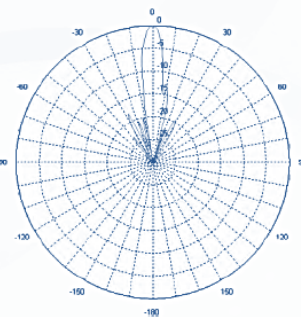
Dimensions of Antenna(mm)	2600x380x140	
Dimensions of Package(mm)	2900x425x230	
Weight of Antenna (kg)	26	
Weight of Mounting KIts(kg)	5.9	
Install Position Adjustment	0-10	
Temperature C°	-40 - +60	698-960MHz
Mu Wind Speed (m/s)	55	1710-2690MHz
Radome Material	Plastic or FRP	1710-2690MHz
Diameter of installation Pole (mm)	Φ50 - Φ110	



Horizontal pattern



Vertical pattern



Indoor Cell Phone Signal Jammer

ATJ5-040-56

The Cell Phone Signal Jammer can help to block the mobile signals for any area that are confronted with cellular communication problems: for example, loud incoming call rings, loud telephone conversations, secret leaking and bomb explosion through cell phones, electromagnetic radiation to gas station, chemical material warehouse and hospital equipment.

This product is suitable in executive offices, board meetings, conferences, seminars, libraries, cinemas, religious places, public transport, concert halls, restaurants and educational institutions, etc.

Cell Phone Signal Jammer transmits strong power radio signals to cut-off communications between cell phone and cellular base-stations. It does not interfere with any communications other than cellular within the defined regulated zone.

Upon activating Cell Phone Signal Jammer, all idle phones will indicate "NO SERVICE".

Incoming calls are blocked as if the cellular phone is OFF.

When Cell Phone Signal Jammer is turned off, all cellular phones will automatically re-establish communications and provide full service.

FEATURES

- Special technology to prevent interference between each frequency band;
- Only interfere downlink frequency of mobile system, without disturb normally working of Base Stations
- Low weight and nice texture and color
- To block wireless phone communication links within an effective area
- No transmissions or receptions of cell phone call in coverage area
- All specified frequency bands will be blocked simultaneously

Output Ports: LTE800, GSM/UMTS/LTE900, DCS/LTE1800, UMTS/LTE2100, LTE2600
Jamming Frequencies: 791~821MHz, 925~960MHz, 1805~1880MHz, 2110~2170MHz, 2620~2690MHz

Composite Output Power: 2W/33dBm Per Band

Total RF Output Power: 10W(40dBm)

Connector Type: 5 x SMA-Female

Power Supply: AC110V~240V,50/60Hz

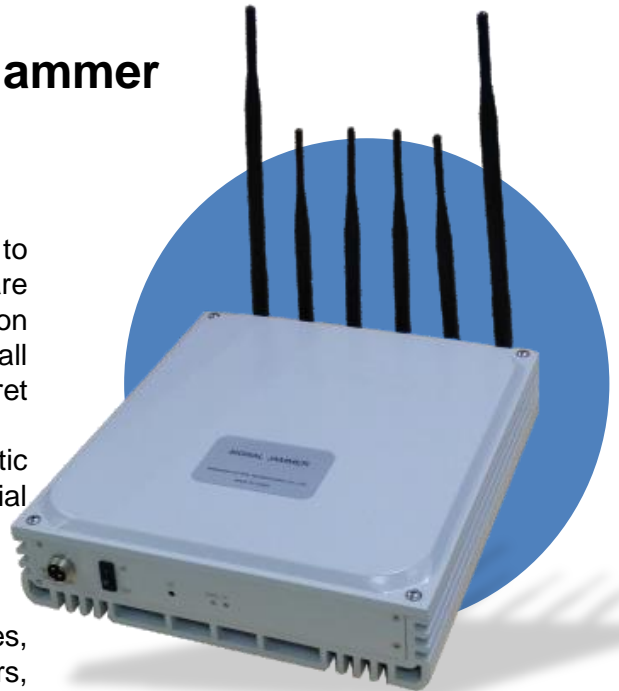
Dimension: 265x318x68mm

Weight: 6kg

Running Temperature: -10 to +50°C

Application: Indoor(IP30)

Accessories: 5 pcs antennas



Specifications of Cloud Network Management System

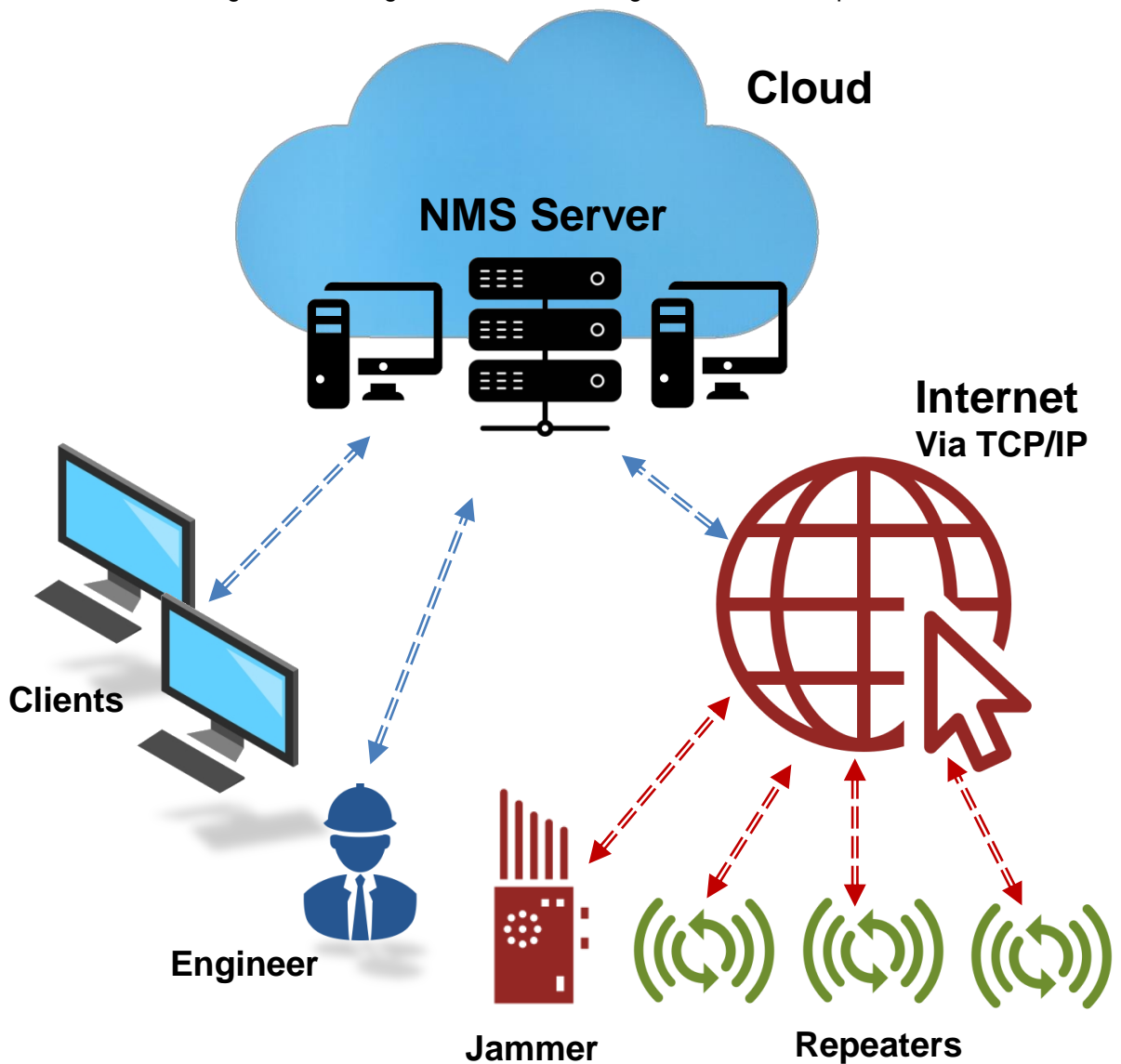
Specifications of Cloud Network Management System

With the upcoming 5G, the Internet of Things (IoT) and cloud has become two of the most important topics of discussion for 5G applications worldwide. Through 4G and 5G, Smart Meter, Intelligent Lighting etc, everything is connected and become an unstoppable trend.

Jammer/Repeater, one of the mobile signal enhance/blocking solution, by the time operator deployed more, the more and more operators consider Jammer/repeater shall be managed since operator needs to know Jammer/repeater status and take proper action before complains call come.

The Cloud NMS is the latest Jammer/Repeater management cloud-based solution provided by ACTION. Intuitive and fast, this fully customizable PC software's unique features make it an indispensable tool for operators worldwide.

The Jammer/Repeater is connected to the Internet or LAN by twisted-pair, the Cloud NMS supports IP communication and communicates with the Jammers/repeaters in the Internet or LAN, enabling remote configuration and monitoring of the Jammer/repeater.



Specifications of Cloud Network Management System

NO CAPEX & LOW OPEX

Rather than purchasing expensive hardware, software for the Jammer/repeater management system, there is no capital expenditure required.

There is no worrying about underlying infrastructure costs, the cost of system upgrades and maintenance as they are included in your year contract.

The metered service (pay-per-use) allows you to be charged only for what you actually use.

MOBILITY

The Cloud NMS's cloud-based architecture means the software can be accessed anywhere with a browser to give you the ability to collaborate, communicate and share easily greatly simplifying its usage. No matter where you are, the critical data you need is just a few clicks away.

The Cloud NMS greatly enhances flexibility resulting in fewer time delays.

FASTER COMMUNICATING SPEED

ACTION Network Management System platform supports the following two types of servers:

1) Local Server: Users install and configure NMS software on their LAN server. After the server is started, open the browser and input the server's url in the browser address bar, such as: <http://192.168.1.253>, and enter the user name and password to log in successfully.

2) Cloud Platform: Users rent the NMS server on the cloud platform, and install and configure the NMS software on the cloud server. After the configuration is completed, the NMS software can run normally. After the server is started, open the browser and input the server's URL in the browser address bar, such as <http://47.106.8.20>, and enter the user name and password to log in successfully.

NMS FEATURES AND FUNCTIONS

- Device Management: Jammer/Repeater/site added, modified, deleted, queried and statistical of Jammer/repeater/site information
- Configuration Management: To set or query device parameters and network management parameters
- Polling Management: Can add devices , create collections, set conditions, start tasks as needed
- Alarm management: To set the alarm level and alarm filtering conditions to query the alarm log
- Log Management: The log is divided into system log, polling log, alarm log, and provides functions such as query, statistics and export.
- Security Management: User management, hierarchical management