

3DX-RAY



FlatScan2-15

- Suspect item inspection
- EOD evaluation
- Customs control
- Vehicle scanning
- Compact panel

Portable, real-time x-ray scanning system

FlatScan2-15 is a lightweight, portable, battery powered x-ray scanning system designed in co-operation with first responders and EOD teams to meet the needs of the field operative.

Quick and simple to deploy, the system produces high quality real-time x-ray images for rapid and accurate decision making.

The detector panel is positioned behind the target; the generator is placed in front. The scan is activated from the laptop imaging station.

The 297mm x 206mm imaging area of the FlatScan2-15 enables the operator to scan typical bags and packages in a single scan.

Penetrating up to 34mm steel at 120kV the system produces sub-millimetre resolution images.

A range of sophisticated image processing functions, including materials discrimination, pan, zoom, DeepFocus™,

3D Emboss, measurement and annotation, coupled with high quality images enable the operator to interpret the image quickly and accurately.

The software can also communicate the image on screen to a remote command centre and save images in JPEG and other common file formats.

Ideal for use by First Responders, EOD teams, Counter Surveillance, and Customs and Security Operatives

The system comprises

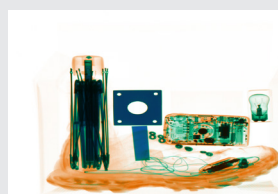
- A resilient detector panel
- A portable and robust x-ray generator
- A laptop imaging station
- Batteries and chargers
- Wireless communication
- Carry cases
- ThreatSpect software

Features

- High penetration with sub-millimetre resolution
- Compact detector panel
- Real-time images
- Designed for rapid deployment and ease of use
- Powerful image enhancement and analysis tools
- Intuitive, user-friendly ThreatSpect software



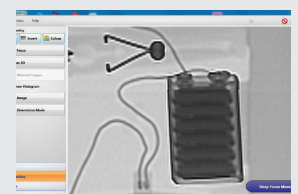
Annotated image



X-ray of shoebox contents

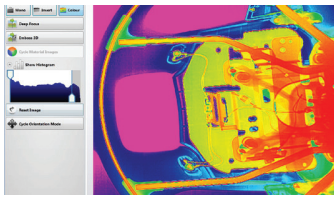


Improvised explosive device in can

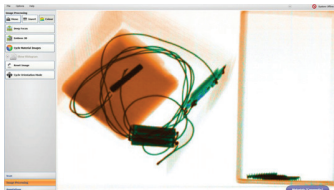


Zoom and DeepFocus

FlatScan2-15



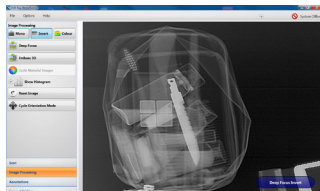
False colour



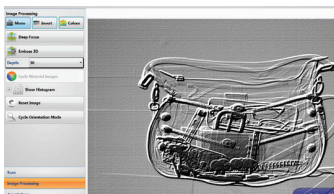
Material discrimination



I-Gen generator with 360° stand



Invert



3D Emboss

Standard Package

Compact x-ray detector panel, 120kV x-ray generator, laptop computer, ThreatSpect software, batteries, chargers, wireless communication and transport cases.

Options include: tripod, repeater stations, spare batteries and chargers, soft carry cases, wired and fibre optic cable sets.

X-Ray Detector Panel

| | |
|----------------------------------|---|
| Image / detector resolution | 512 pixels, 40AWG 2.5 lp/mm |
| Dynamic range | 4096 (12-bit) |
| Image acquisition / scan speed | 7 sec |
| Detector dimensions | 434mm x 253mm x 86mm (external) (L x H x D) |
| Imaging / scanning area | 297mm x 206mm |
| Weight | 5kg |
| Power | Self contained rechargeable lithium ion battery |
| Communication protocols | Wireless 802.11g / Bluetooth Wired or fibre optic options, TCP/IP ethernet |
| Operating temperature | -10°C to +40°C / MIL-STD-810F 501.4 and 502.4 |
| Bump test | IEC 60068-2-29:Test Eb |
| Humidity | 0% to 95% non-condensing |
| Ingress protection (water, dust) | Designed to IP55 |

X-Ray Generator

| | |
|--------------------------|---|
| Type | 1mA constant potential 120kV |
| Power | Self contained rechargeable cells Up to 180 images on one charge (2 hour charge) Mains power option |
| Penetration | 30mm guaranteed, 34mm typical |
| Weight (without battery) | 5.5 kg |
| Size (L x W x H) | 245mm x 180mm x 80mm |

Communications

| | |
|------------------------|--|
| Wireless (as standard) | 802.11g / up to 120m range (extendable with repeaters) |
| Fibre optic (option) | 100m, 150m, 200m |
| Ethernet (option) | 25m, 50m |

Imaging Station*

| | |
|------------------|--|
| Type | Laptop computer (ruggedised / tablet options available) <i>* PC specification to be confirmed and agreed at order stage</i> |
| Processor | Intel Core i5-4200U, Dual Core |
| Display | 15.6" Full High Definition (1366x768) LED Display with AntiGlare |
| Memory | 4GB 1600MHz DDR3L (RAM) |
| Hard Drive | 500GB Serial ATA Hard Drive |
| Optical Drive | DVD +/-RW Media Bay Drive |
| Operating System | English MS Windows |
| Power | Mains and battery |

Software Features

Adjustable x-ray source parameters (kV, mA & time)
Standard, Inverted and False Colour images
Rotate, Histogram, Pan, Zoom, DeepFocus™
On-screen Measurement and Annotation (options)
Materials Discrimination, Stitching and 3D Emboss (options)
Multi-file format import (option)
Multi-touch functionality for tablet based operation (option)

Safety

Physical safety interlock plus key switch
Audible & visible warning signs
CE compliant

Certification & Codes

NATO codification NSN 6350-99-152-8965