

# TIBET

Art. No. 201002



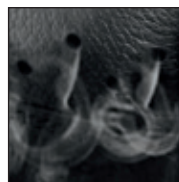
## CE EN ISO 20347:2012 O2 HRO HI CI WR FO SRC

Leather thickness 2,5 – 2,7 mm, waterproof and breathable with GORE-TEX® Performance, leg height 23 cm, antistatic, sole 05

Available sizes UK 4 – 12, Extra large sizes UK 12 ½ – 13 ½



201002



HAIX® Climate System



HAIX® MSL System



### Upper Material

Waterproof leather, hydrophobic, breathable (4,0 mg/cm<sup>2</sup>/h), 2.5 – 2.7 mm thick.

### Inner Lining

GORE-TEX® Performance; 4-layer GORE-TEX® laminate, waterproof and breathable. Highly abrasion-resistant lining with fleece midlayer. Optimized- climate comfort for all year seasons and excessive use. Increased chemical protection.

### Plastic Insole

dimensionally stable, torsion-proof, avoids punctual pressure (e.g. of stones).

### Foot bed

Anatomically formed, exchangeable, washable, very good moisture absorption, dries quickly.

### Sole

Rubber/PU sole with a street/terrain tread, wear resistant and non-slip traction.

Optimal step and bend behaviour due to sporty toe and heel rounding. This rubber shell sole features the MSL (micro-soft-light) system that is the result of an additional production process to achieve extremely low weight, excellent cold/heat insulation and non-marking characteristics. The manually applied rubber sidewall gives this sole optimal side stability. Compliant with EN ISO 20347:2012.

### HAIX® Climate System

The HAIX® Climate system uses the pumping movement, which permits air circulation with every step – warm air is released and fresh air comes in through the vent holes at the top of the boot.

### HAIX® MSL System

For increased impact absorption and isolation.

### Sun Reflect

Reduces the heating effect of the upper leather by direct sunlight. Sunlight is reflected by the leather, keeping the leather and the feet cooler.

### Others

Integrated heel bend, no side seams, lacing system with eyelets permitting smooth movement, clamps and hooks.

UK	3	3½	4	4½	5	5½	6	6½	7	7½	8	8½	9	9½	10	10½	11	11½	12	12½	13	13½	14	14½	15
EU	35	36	37	37	38	39	39	40	41	41	42	43	43	44	45	45	46	47	47	48	48	49	50	50	51
US	4	4½	5	5½	6	6½	7	7½	8	8½	9	9½	10	10½	11	11½	12	12½	13	13½	14	14½	15	15½	16

**HAIX®-Schuhe, Produktions- und Vertriebs GmbH**  
 Auhofstrasse 10, 84048 Mainburg, Deutschland  
 T. +49(0)8751/8625-0, F. +49(0)8751/8625-25  
 info@haix.de, www.haix.com