

# X-RAY BAGGAGE SCANNER

INTERNATIONAL  
**ARMOUR**  
CO.  
[www.armour.gr](http://www.armour.gr)



**HP-SE6040C**

# HP-SE6040C

## X-RAY BAGGAGE SCANNER



- Exclusive Spectrum 7-color imaging Technology
- Multiple Split-Screen and Full-Screen for optimal Viewing
- Auxiliary Explosives and Narcotics Detections Tools
- More Than 30 Versatile Image Processing Functions
- Advanced material classification (atomic number)
- Unique Neoteric Double Symmetrical Swing Door

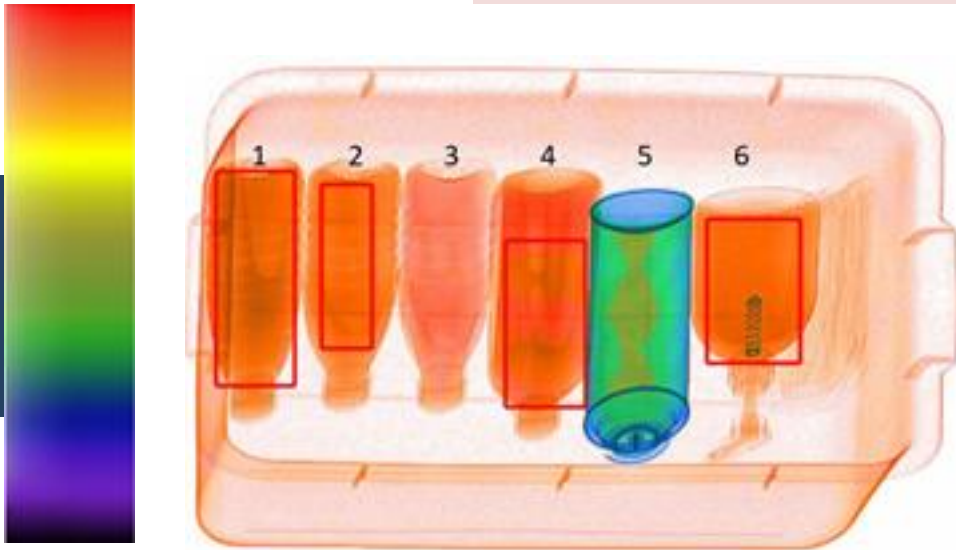
### Application

System state-of-the-art high performance X-ray baggage scanner, solutions, and the services perfectly meet the most demanding potential threat inspection needs at border crossings, railway stations, shopping malls, hotels, government and military installations and high-risk facilities all over the world. It is the ideal for the small footprint sites.

# HP-SE6040C

## X-RAY BAGGAGE SCANNER

### Scanner 7-Colors Detector



1. Water
2. Alcohol
3. Kerosene
4. Edible Oil
5. Liquefied Natural Gas
6. Antibacterial Hand Gel

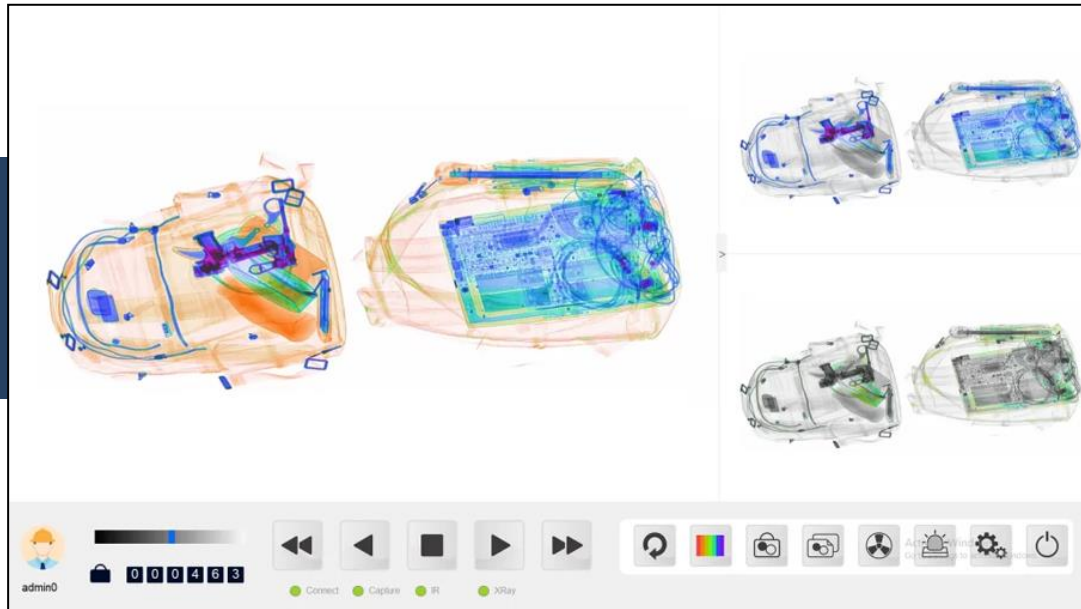
The HP-SE6040C's innovative design with 7 color imaging technology, advanced material classification enables operator to view screened objects in 7 colors, each color correlate to a specific range of atomic number.

Combine with the Zeff-scan function to auto-highlighting the potential threat of explosive and narcotic (liquid or solid) on X-Ray image in real time during scanning process according to the characteristics range of explosives and narcotics atomic number (zeff 7.8.9) , which help to identify the suspicious more effectively.

- Switchable 4/7 Colors Imaging
- Real-time Imaging Processing
- Organics & Inorganic & Mixture Striping
- Hazard Liquid (Zeff 6) Assistant Detection
- Explosive and Drug (Zeff 789) Assistant Detection
- Thin Object Scanning, Splicing Scanning

# HP-SE6040C

## X-RAY BAGGAGE SCANNER



### DUAL-ENERGY CLEAR IMAGING & SPLIT-SCREEN TECHNOLOGY

Dual-energy supports to identify then display the objects concealed in bag in the specific color according to their atomic number, the metallic (guns, bullets, knife) can be blue, the organic (plastic, cloth, currency) can be orange.

Safeagle scanning screen supports multiple Split-Screen and Full-Screen options for optimal viewing, operator can be customize the color mode of the switchable main screen and auxiliary screen respectively.

### VERSATILE SOFTWARE WITH 30 IMAGING PROCESSING TOOLS

- With over 30 imaging processing tools and detection alert algorithm functions;
- Multiple access level account with different operation privileges according to the status hierarchy;
- Backed by a team of rich experts, support customized function modules according to clients' requirements;

### HUMANIZED STRUCTURE WITH HIGH PROTECTION LEVEL

- Lead-lined rigid-steel structure and double layer lead-lined curtain to block x-ray dose;
- Equipped with double symmetrical swing door at its both side for convenient repair and maintenance;
- Provided with system energized, X-Ray on indicators and emergency stop buttons at both ends of X-ray tunnel;
- 4 high-strength castor wheels at its base for ease of maneuverability, enable operator to move the scanner easily;
- Offer adjustable wear-resistant foot cups to achieve stability and security during use;
- The shift knob and key switch are securely located on top of the scanner, one-key start and shutdown anytime.

# HP-SE6040C

## X-RAY BAGGAGE SCANNER

### Software Advantages

The software is to control the x-ray baggage scanner as well to acquire and process the x-ray image with different tools to find the potential threat, all the tools can be controlled by the Exclusive Control Panel.

### IMAGING PROCESSING TOOLS

- Switchable 4 and 7 Colors Mode
- Inverse Mode
- Gray
- Variable Gamma
- Organics & Inorganic & Mixture Stripping
- Plus 6 kinds Pseudo Color Display
- Variable High & Low Penetration
- Log & Exp Trans
- Gaussian Blur& Sharpen
- Super & Partial Enhancement
- High & Low & Fusion Energy
- Density Threshold Alarm (DTA)
- Continuous Zoom (64X)
- Splicing-scan (S-scan)
- Continuous Scan (C-scan)
- Zeff-scan (Z-scan)
- AI Roller (optional)
- Reset Image
- Calibration

### AUXILIARY FUNCTIONS

- Bidirectional Scanning
- Recall Historical Image
- Query & Backup & Mark Image
- Print Image
- Baggage Counter
- Day/Time Display
- Multi-language Operation
- Auto Image Archiving
- Storage Type: PNG, JPEG, BMP
- Start-up Self-diagnostics
- Real-time Image Manipulation
- Different Access Level Account
- Network Ready
- Secure Access Key
- Emergence Stop Button
- 0.5 m Roller Table
- Interlock(optional)
- Threat Image Projection(TIP)(optional)
- Operator Training System (OTS)(optional)



# HP-SE6040C

## X-RAY BAGGAGE SCANNER

### Technical Parameters

#### GENERAL SPECIFICATIONS

Tunnel Size: 624(W) x 429(H)mm  
Dimensions: 1499(L) x 947(W) x 1340(H)mm  
Convery Max Load: 165kg  
Belt Speed: 0.23m/s Bidirectional

#### X-RAY GENERATOR

Voltage: 140kV  
Wire Detectability: 40 AWG  
Spatial Resolution: 1.0 mm Horizontal, 1.0 mm Vertical  
Steel Penetration: 36 mm steel Typical  
Tube Current: 0.7 mA  
Cooling: Sealed Oil Bath with Forced Air  
Duty Cycle: 100%,No Warm-Up Procedure Required  
Beam Direction: Diagonally Upward  
Detector: L-Shaped Array  
Dual-energy: Yes

#### WORKING ENVIRONMENT

Operating Temperature: 0°C- 40°C 32°F – 104°F  
Storage Temperature: -20°C- 60°C -4°F- 140°F  
Humidity: Up to 95% Non-Condensing  
Power Requirements: 220VAC±10%, 50/60Hz, 10A Max

#### COMPUTER

Processor: Intel Pentium G4560  
Memory: 4 GB RAM  
Storage: 1TB SSD (standard)  
Platform: Windows OS  
Display Type: Single 21.5" LCD Color Monitors  
Display Resolution: 1980 x 1080; 24 bit/Pixel Color  
Image Archiving: 2,00,000 images

#### HEALTH AND SAFETY

Compliant with National Radiation Safety Standards for Cabinet X-Ray Systems.  
Typical Radiation leakage is less than 0.1 mR/hr(1.0 µSv/hr)  
Film Safety: Guarantee ISO 1600 (33 DIN)

# HP-SE6040C

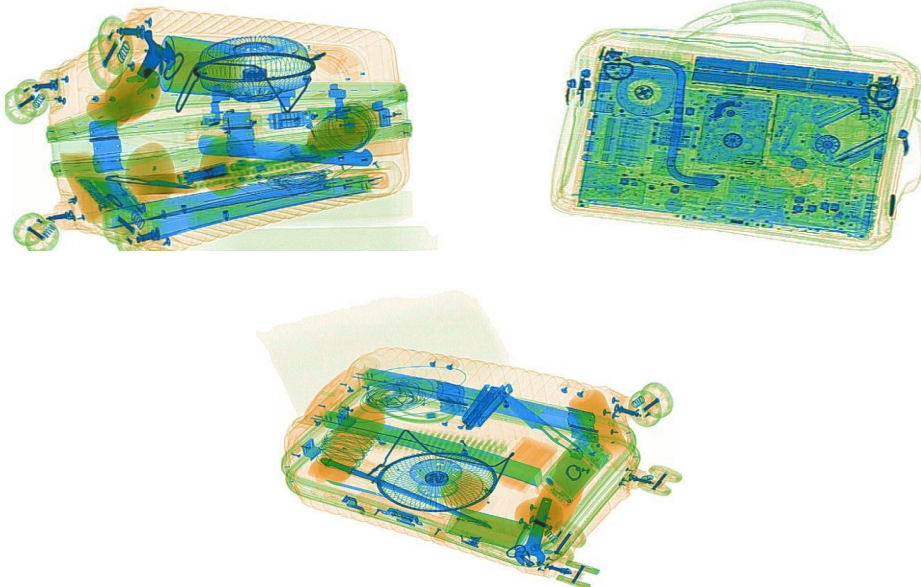
## X-RAY BAGGAGE SCANNER

### CERTIFICATES

- US. FDA: Title [21, CFR, Part 1020.40]
- CE Compliance:
- Directive 2014/30/EU Electromagnetic Compatibility The Machinery Directive 2006/42/EC
- LVD Directive 2014/35/EU
- RoHS: (EU) 2017/2102
- FCC Compliance Part 15 B Rules
- Film Safety: Up to ISO 1600( 33 DIN)
- Radiation Safety Certificate
- ISO9001 Quality Management System

### RADIATION SAFETY CERTIFICATE

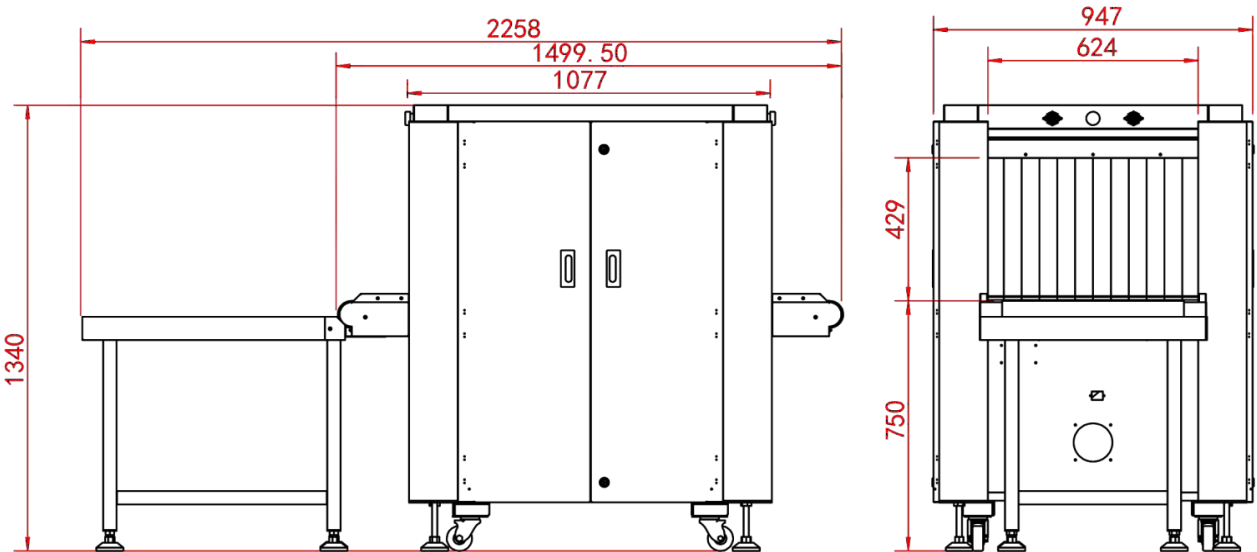
Safeagle Systems comply with all applicable international health and safety regulations including USA FDA X-ray systems (Federal Standard 2.1-CFR 1020.40), Ministry Security and Radiation Safety Certificate by Human Settlement and Environment Commission of Shenzhen Municipality. The x-ray leakage is lower than the limit of  $1.0\mu\text{Sv/hr}$  ( $100\mu\text{R/hr}$ ) at all panels and ports measured at the distance of 5cm. The external radiation emission of U.S. Federal Limit is  $5\mu\text{Sv/hr}$ .



# HP-SE6040C

## X-RAY BAGGAGE SCANNER

Support OEM Service



### Warranty

- 2 years warranty for Basic Spare Parts, 1 year for Critical Spare Parts in free after delivery (Non-artificial damage);
- Replacement parts and shipping cost at Safeagle®'s expense;
- Software upgrade included;
- An extended warranty is available;
- The warranty shall take effect seven days after receipt of the goods.

### Service

- **Free Factory Training**, included technical training, operator training;
- **Remote Control**, all System embedded with Wireless LAN, can remote support any time;
- **On-site Support**, the engineer is allowed to send oversea to give professional technical support;
- **24-hours Online Service**, technical personnel will be assigned to solve your problem immediately after receiving telephone and hear feedback idea of users and deal with them in time;



# HP-SE6040C

## Optional Functions (Additional Cost)

### **Safeagle Exclusive Control Panel (Part SE-XR001)**

Integrated with Start-Up System , Finger-print System, touch-pad, and E-stop Button. All software commands integrated into shortcut of this keyboard, realize one key control more than 2 functions, make the operation more convenient.

### **AI Threat Detection (Part SE-A1)**

Adapt to wide range of X-ray screening system, auto-recognize contraband of gun, knives , etc. high accuracy & high recognition, easy to use

### **21.5" LCD Touch Screen (Part SE-XR002)**

Clarity with touch: 21.5 inch Full HD touch screen , get a easier and faster operation.  
Resolution: 1920\*1080

### **Security Tray (Part SE-B002)**

- 1) Size 680\*520\*110
- 2) Material: PP
- 3) N.W.: 1.665 kg

### **Built-in Multi-Angle Cameras (3+3) (Part SE-XR003)**

6 built-in cameras in the protective covers Respectively, 3 on each side, one for baggage , one for passenger, Other for environment monitoring. Support data tracing via mobile phone. (PS: need one more monitor to display monitoring screen.)

### **Supervisor Monitor Platform (Console)**

Operator working station to put the monitor and keyboard. With cabinet to lock the keyboard. Equipped with Start System, Emergency Stop, wheels for quick portability.

### **Intelligent zed (AI) Roller**

Belt rolling only when the IR be triggered, or it remains static, which is energy-saving and helps to extend machine lifetime

### **Superior Roller Tables**

The roller beds are all made of 304# superior stainless steel, mounted on both exit and entrance platform to transmit the baggage easily. Adjust freely according to the height of machine (Length: 0.5m increment)

### **Voltage Stabilizer**

Filter out the unstable current voltage crest value, stable output with rated current voltage, to protect device.

### **Uninterrupted Power Supply**

For Computer: 20 min  
For Machine: 2 hours  
For Data Protection when electricity cut off.

### **UV Disinfection Solution**

Embedded the UV light at both exit and entry covers inside left , right and top to eliminate bacteria and viruses on the surface of the scanning parcels and inspection tunnel.

### **Power-driven Conveyor**

The conveyor will be mounted on both exit or entry for transportation, the direction of rotation can be same as the x-ray baggage scanner.

