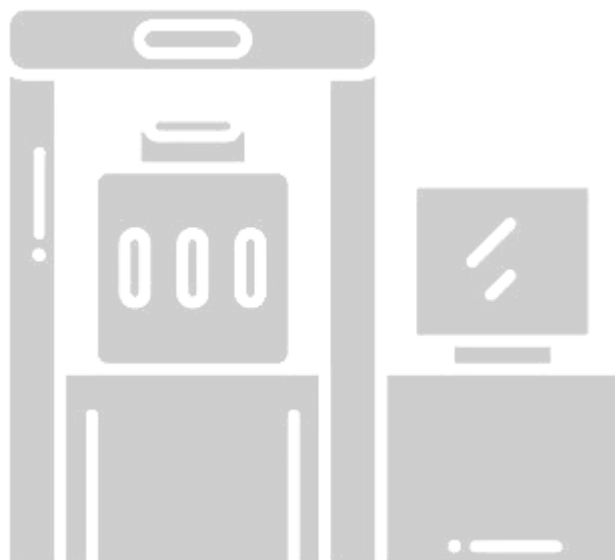


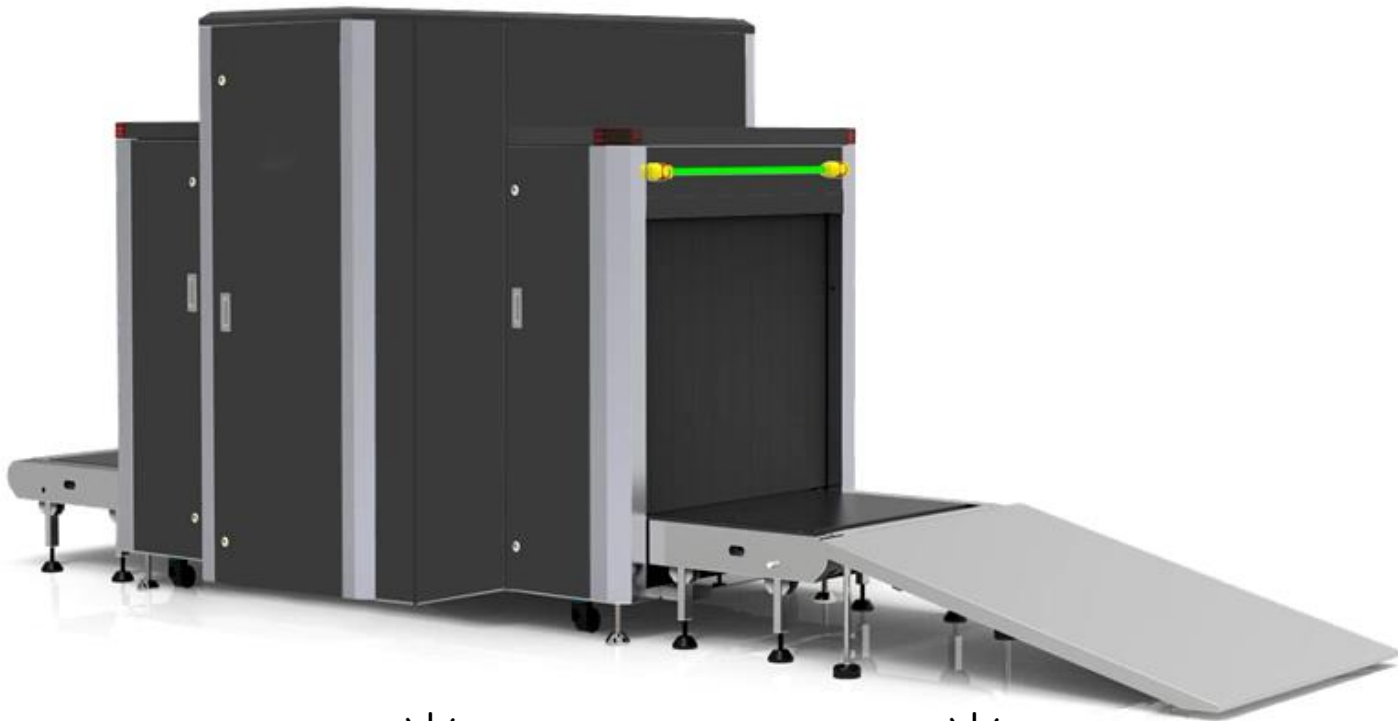
X-RAY HP-SE100100D

INTERNATIONAL
ARMOURTM

www.armour.gr



X-RAY BAGGAGE SCANNER HP-SE100100D



Exclusive Spectrum
7 Color Imaging Technology



Auxiliary Explosives &
Narcotics Detection Tools



Dual X-Ray Generators
Dual Images from 2 directions



Small Cargo Screening
Lower Conveyor for Easy Loading



Advanced Material Classification
(atomic number)



Unique Neoteric Double
Symmetrical Swing Door

APPLICATIONS

The **HP-SE100100D** System (ideal for small cargo screening) X-Ray baggage scanner meets the most demanding potential threat inspection needed at border crossings, railway stations, logistics companies, hotels, governmental and military entities and high-risk facilities all over the world

X-RAY BAGGAGE SCANNER

HP-SE100100D

ADVANTAGES

The HP-SE100100D's innovative design with exclusive Safeagle 7 colour Dual-energy Technology and advanced material classification enables the operator to view screened objects in 7 colors, where each color correlates to a specific range of atomic numbers.

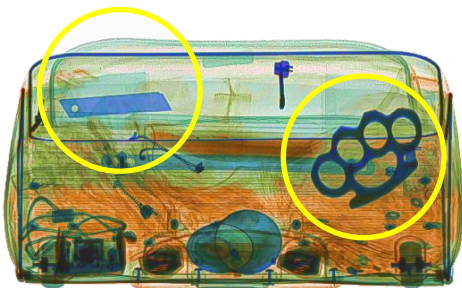
Combined with the Zeff-scan function to auto-highlighting the potential threat of explosives and narcotics (Zeff 7.8.9) on an x-ray image and in real-time during the scanning, it helps - according to the characteristics range of explosives and drugs atomic number - in the identification of the suspicious materials, more effectively.

Material Type	Atomic No.	Colors	Colors	Example	Possible Threat
Light Organics	6	Orange	Orange	Polyethylene light hydrocarbons	Natural gas, gasoline
Organics	6-8	Orange	Orange	Timber, oil, alcohol, water	Explosives pure drugs, diamonds
Light Inorganics	8-10	Orange	Yellow	Paper, Teflon	Drugs
Inorganics	10-12	Green	Green	Glass	Gems
Nonmetals and Light Metals	12-18	Green	Green	Aluminum, silicon	Gunpowder, detonators
Heavy Metals	18-30	Blue	Blue	Iron, steel, copper, brass, nickel, titanium	Weapons, ammunition knives
Dense Metals	30+	Blue	Violet	Zirconium, tin, bronze	Precious
Impenetrable	-	Black	Black	Lead, bismuth	Hidden threats

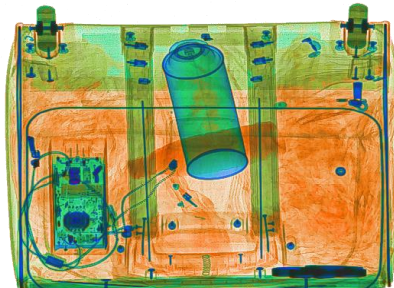
DUAL VIEW TECHNOLOGY

It provides dual-view images from the bottom up and sideward, improving the detection rate of concealed dangerous and illegal objects.

The operator can see the Blade and Brass Knuckles from the side view clearly.



Side View



Bottom Up View

X-RAY BAGGAGE SCANNER

HP-SE100100D

HUMANIZED STRUCTURE WITH HIGH PROTECTION LEVEL

- Ledged rigid-steel structure and double-layer leaded curtain to block x-ray dose;
- Equipped with a double symmetrical swing door on both sides for convenient repair and maintenance
- Provided with system energized, X-Ray ON indicator and emergency stop buttons at both ends of X-Ray tunnel;
- 4 High Strength caster wheels as its base for ease of manoeuvrability, enabling the operator to move the scanner quickly and easily;
- Other adjustable wear-resistant foot cups to achieve stability and security during use
- The shift knob and key switch are securely located on top of the scanner, with one key for start and shutdown anytime.

SOFTWARE ADVANTAGES

IMAGING PROCESSING TOOLS

- Switchable 4 and 7 Colors Mode
- Inverse Mode
- Gray
- Variable Gamma
- Organics & Inorganic & Mixture Striping
- Plus 6 kinds Pseudo Color Display
- Variable High & Low Penetration
- Log & Exp Trans
- Gaussian Blur& Sharpen
- Super & Partial Enhancement
- High & Low & Fusion Energy
- Density Threshold Alarm(DTA)
- Continuous Zoom(64X)
- Splicing-scan(S-scan)
- Continuous Scan(C-scan)
- Zeff-scan(Z-scan)
- AI Roller(optional)
- Reset Image
- Calibration

AUXILIARY FUNCTIONS

- Bidirectional Scanning
- Recall Historical Image
- Query & Backup & Mark Image
- Print Image
- Baggage Counter
- Day/Time Display
- Multi-language Operation
- Auto Image Archiving
- Storage Type: PNG, JPEG, BMP
- Start-up Self-diagnostics
- Real-time Image Manipulation
- Different Access Level Account
- Network Ready
- Secure Access Key
- Emergence Stop Button
- Console and Exit Landing Platform
- Interlock(optional)
- Threat Image Projection(TIP)(optional)
- Operator Training System (OTS)(optional)

X-RAY BAGGAGE SCANNER

HP-SE100100D

TECHNICAL PARAMETERS

GENERAL SPECIFICATIONS

- Tunnel Size: 1001(W)x 1001(H)mm [39.40x39.40 in.]
- Belt Speed: 0.23m/s (45ft/min) Forward
- Conveyor Load: 200 kg(440 lb) Evenly Distributed
- Conveyor Height: Evenly Distributed
- Noise: <45dB

X-RAY GENERATOR

- Voltage: 140kV*2
- Wire Detectability: 30~35 AWG
- Spatial Resolution: 1.0 mm Horizontal, 1.0 mm Vertical
- Steel Penetration: 35 mm steel Typical
- Tube Current: 0.7 mA
- Cooling: Sealed Oil Bath with Forced Air
- Duty Cycle: 100%,No Warm-Up Procedure Required
- Beam Direction: Horizontal and Vertical
- Detector: L-Shaped Array
- Dual-energy: Yes

WORKING ENVIROMENT

- Operating Temperature: 0°C- 40°C \ 32°F - 104°F
- Storage Temperature: -20°C- 60°C \ -4°F- 140°F
- Humidity: Up to 95% Non-Condensing
- Power Requirements: 220VAC±10%, 50/60Hz, 10A Max

COMPUTER

- Processor: intel Pentium G4560
- Memory: 4 GB RAM
- Storage: 1TB SSD (standard)
- Platform: Windows OS
- Display Type: 34"Curved-display
- Display Resolution: 3440 x 1440; 24 bit/Pixel Color
- Image Archiving: 2,00,000 images

HEALTH AND SAFETY

- Compliant with National Radiation Safety Standards for Cabinet X-Ray Systems.
- Typical Radiation leakage is less than 0.1 mR/hr(1.0 µSv/hr)
- Film Safety: Guarantee ISO 1600 (33 DIN)

X-RAY BAGGAGE SCANNER HP-SE100100D

WARRANTY & SERVICE

Warranty

- 2 years warranty for Basic Spare Parts, 1 year for Critical Spare Parts in free after delivery (Non-artificial damage);
- Replacement parts and shipping cost at manufacturer expense;
- Software upgrade included;
- An extended warranty is available;
- The warranty shall take effect seven days after receipt of the goods.

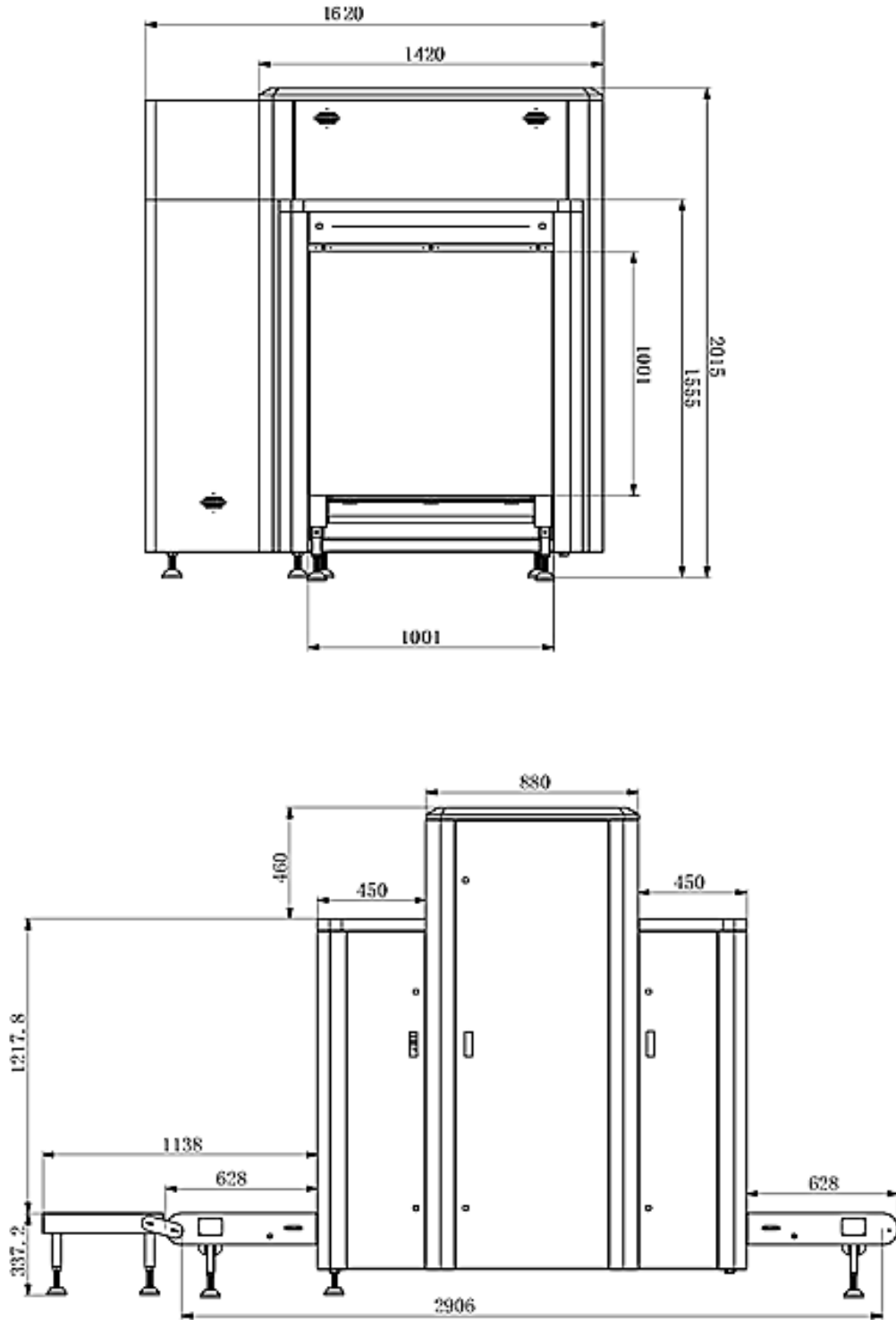
Service

- **Free Factory Training**, included technical training, operator training;
- **Remote Control**, all manufacturer System is embedded with a Wireless LAN that can remotely support any time;
- **On-site Support**, the engineer is allowed to send oversea to give professional technical support;
- **24-hours Online Service**, technical personnel will be assigned to solve your problem immediately after receiving telephone and hear feedback idea of users and deal with them in time;
- **Support OEM service.**

Certificates:

CE Certificate
FDA Certificate
ISO 9001 Certificate (CNAS, IAF)
FC Attestation of Conformity
RoHS Attestation of Conformity

X-RAY BAGGAGE SCANNER HP-SE100100D



X-RAY BAGGAGE SCANNER HP-SE100100D

OPTIONAL FUNCTIONS (additional cost)



Part#: SE-XR001

Exclusive Control Panel

All software commands integrated into the shortcut of this keyboard are realized one key control to more than 2 functions in order make the operation more convenient and fast.

Is Including key switch, start button, touchpad, emergency stop, and fingerprint module.

- HP series scanners



Part#: SE-XR002

21.5 Inch LCD Touch Screen

21.5 inch large-size screen monitor, get a broader vision easier and faster operation.

Resolution: 1920*1080

Also available **24 Inch LCD Touch Screen** - Part#: SE-XR002-1



Part#: SE-XR003

Built-in Multi-Angle Cameras (3+3)

2x Protective Cover with 6 x built-in cameras

Lead Curtain x2

Video Recorder x1

21.5" Display x1

- HP series model: 5030,5335, 6040, 6550



Part#: SE-XR004-2

Supervisor Single and Double Monitor Platform

Operator working station to put the monitor and keyboard.

Equipped With wheels for quick portability



Part#: SE-XR004-1

Part#: SE-XR004-2

X-RAY BAGGAGE SCANNER HP-SE100100D

OPTIONAL FUNCTIONS (additional cost)



Part#: SE-XR004-3

Supervisor Monitor Platform

The operator working station to put the monitor and keyboard, and can collect and lock the keyboard inside a cabinet.

Equipped With wheels for quick portability



Part#: SE-XR004-4

Supervisor Double Monitor Platform

The operator working station to put the monitor and keyboard, and can collect and lock the keyboard inside a cabinet.

Equipped With wheels for quick portability.

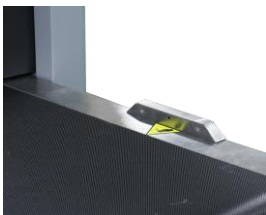


Part#: SE-XR005

Protection Cover x2

The covers are embedded with lead and equipped with extra lead curtain to obstruct x ray leakage from gaps between first lead curtains, mounting on both exit and entrance tunnels

- HP series model: 5030,5335, 6040, 6550



Part#: SE-XR006

Intelligent (AI) Roller

Belt rolling only when the IR be triggered, or it remains static, which is energy-saving and helps to extend machine lifetime.

X-RAY BAGGAGE SCANNER HP-SE100100D

OPTIONAL FUNCTIONS (additional cost)



Part#: SE-XR007

Superior Roller Tables

The roller beds are all made of 304# superior stainless steel, mounted on both exit or entrance platform to transmit the baggage easily.

For compact models: 5030,5335, 6040,6550

Length: 0.5 m/side

Length: 1 m/side

Length: 1.5 m/side

Length: 2 m/side



Part#: SE-XR007-1

Superior Roller Tables

For large models: 8065,10080, 100100

Length: 1 m/side

Length: 2 m/side



Part#: SE-XR008

Voltage Stabilizer

Filter out the unstable current voltagecrest value, stable output with rated current voltage, to protect device.

* UPS for Scanner

For Machine: 1 KVA, 2 h

For Compact Models: 5030,5335, 6040,6550

Part#: SE-XR009-1



* UPS for Scanner

For Machine: 3 KVA, 1 h

For Large Models: 8065,10080, 100100

Part#: SE-XR009-2

* UPS for PC

For Machine: 0.5 KVA, 2 h For All Models

Part#: SE-XR009-3

X-RAY BAGGAGE SCANNER HP-SE100100D

OPTIONAL FUNCTIONS (additional cost)



UVC Sterilization Solution (exit and entry)

Embedded the UV light in both exit and entry covers inside left, right and top to eliminate bacteria and viruses on the surface of the scanning parcels and inspection tunnel. Integrated with AI Roller, the UVC is being activated only when roller is moving.

UVC: 270-280nm

- HP series model: 5030,5335, 6040, 6550

Part#: SE-XR010

UVC Sterilization Solution (exit and entry)

Embedded the UV light in both exit and entry covers inside left, right and top to eliminate bacteria and viruses on the surface of the scanning parcels and inspection tunnel.

UVC: 270-280nm

- HP series model: 8065, 10080, 100100

Part#: SE-XR010-1

