



Coastal & Maritime Surveillance Solution



CONSTRUCTION BACKGROUND



Uncertainty

No coastlines and seas with identical topographic, climatic and threat characteristics



7X24

Need to work continuously for a long time



Adaptability

Need to adapt to harsh coastal conditions



Wide distribution

The coastline is long and narrow, widely distributed and far away from the general monitoring center



Suddenly happening

Events, equipment to be able to timely and accurate positioning



High integrity

Need intelligent linkage management through the platform

PROJECT INTRODUCTION

The three-level surveillance design is adopted in the scheme, which realizes all-day, harsh environment multi-level monitoring through long-distance radar warning, medium-range E.O.S continuous search and detection, and short-range PTZ linkage detail alarm.

1st Protection Line 15-20km

Infiwave S20-G radar can detect and track the moving targets automatically, draw the continuous tracks of the targets, calculate the target's azimuth, distance, speed and heading information, and discriminate the threat degree and category of the target based on the preset alarm rules



3rd Line

The suspicious target alarm signal is linked to the three-level visible light sphere machine for target tracking and image amplification, and the final identification and judgment of the target



2nd Protection Line

Panoramic infrared radar detects targets in a wide range of 360° and visualizes moving targets

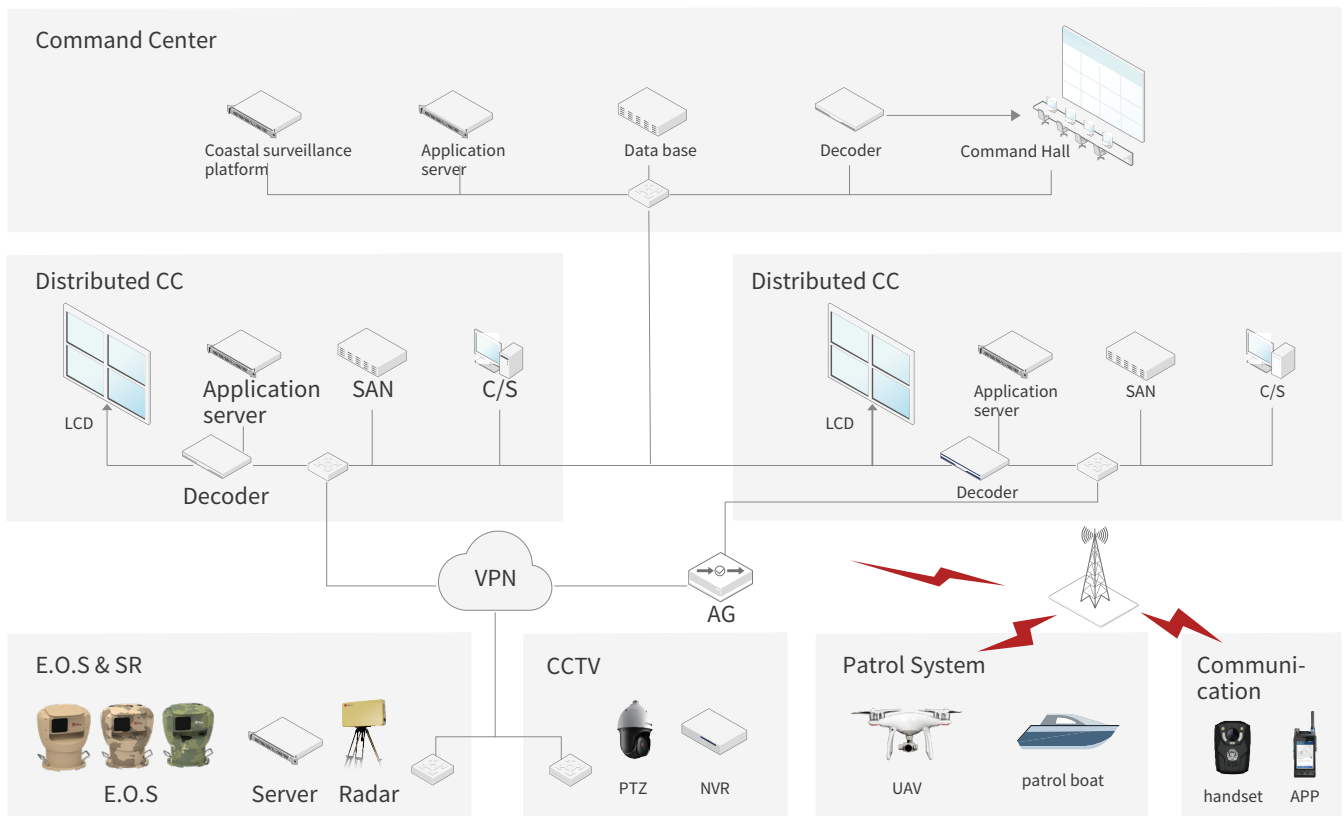


0.5km

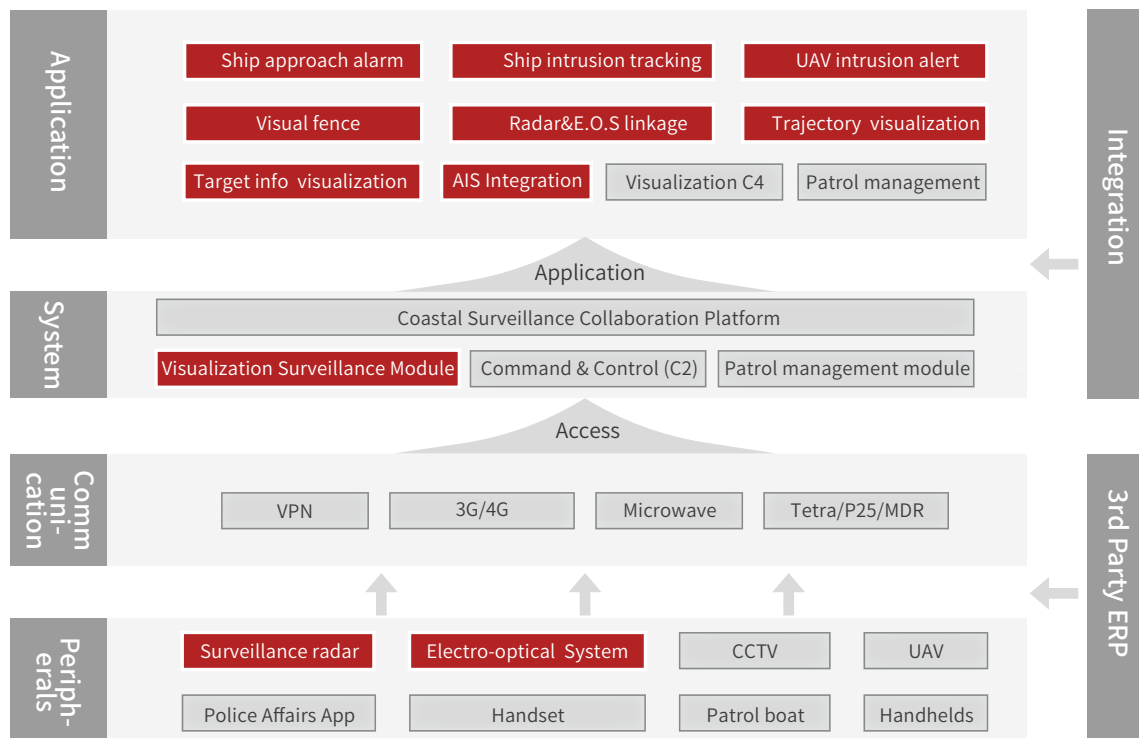
3-6km

15-30km

Network topology view



System Architecture



PRODUCT HIGHLIGHTS



Target Classification Capability - Surveillance Radar

Based on the optimization of the algorithm of the marine scene, the radar system supports the classification of marine moving targets, such as large ships, medium-sized ships, small ships, etc., which can help users to judge and dispose of suspicious targets.



Virtual electronic fence, control no-pass and no-fly areas

Once unlicensed ships or flying objects break into the area without permission, the radar will automatically lock the target for tracking, report the target position, speed, trajectory and other information, and at the same time link the infrared panoramic camera and PTZ system for further processing



Intelligent visible light PTZ linkage, to realize the discovery and visibility

After the system detects the target, it can automatically link visible light PTZ for secondary identification and judgment



Unrestricted area, intelligently set monitoring shielding area

The user can set an unrestricted area, that is, the shielded area. The system does not alarm the target entering the shielded area. It can be applied to the monitoring area. When there are legal operating channels and legal ship stopping areas, this part of the legal area can be shielded. Intelligent distinction of other warning areas



Visual alarm presentation, dynamic grasp of target movement information

Both the surface surveillance radar and the infrared panoramic camera system interface support 360° radar viewing angle display. The red dot information on the screen is the target position information. At the same time, the red dot will move with the movement of the target, presenting a dynamic alarm display.

Recommendation



Infrared Panoramic
E.O.S Mini
XSENTRY-UM619



Infrared Panoramic
E.O.S Uncooled
XSENTRY-U675/1275



Dual-Spectrum PT Camera
IRS-PT4



Ground Surveillance Radar
Infiwave S20-G

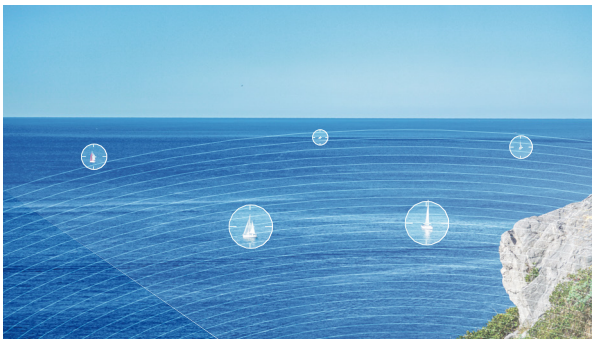
APPLICATION SCENARIOS



▼
Track suspicious ships,
Strictly prevent smuggling at sea



▼
Protecting rare marine animals, Prevent poaching



▼
Monitor key ships,
Combating Drug Smuggling and Trafficking



▼
Suspicious vessel intrusion warning ,
Protect important maritime infrastructure



▼
Suspicious vessel approaching warning,
Prevent and control terrorists



▼
Alarm of suspected target intrusion to protect port
perimeter infrastructure

INTERNATIONAL
ARMOUR