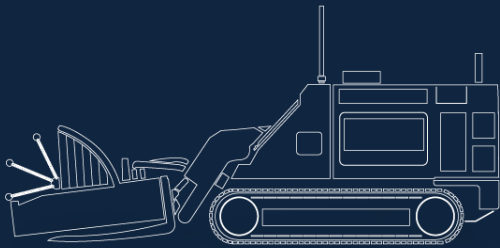


INTERNATIONAL
ARMOUR
www.armour.gr

MECHANICAL MINE CLEARING VEHICLE



www.armour.gr

MECHANICAL MINE CLEARING VEHICLE

It is a multi-purpose mechanical system on a variety of terrain conditions to clear land contaminated with mines and explosive remnants of war and open the land for economic usage for agricultural production and/or settlement.

With its powerful engine and high torque level, it can work on dense vegetation and rocky terrain.

It is designed to minimize the risk on human life while maximizing speed and effectiveness of demining operations. It is a remote-controlled mechanical mine clearance device with remote-control capability for up to 5 km distance.

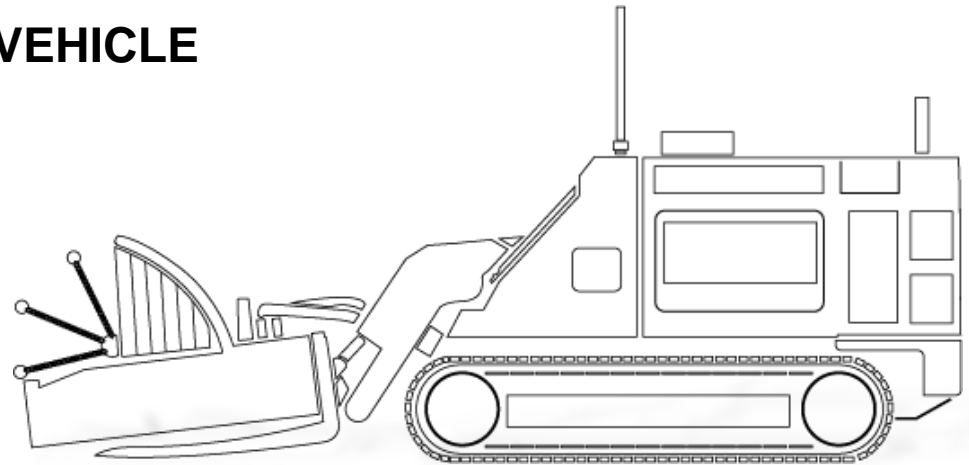
Effective and reliable

System has been subjected to tests within the scope of the international CWA 15044 standard.

It proved its effectiveness against anti-personnel mines, anti-tank mines and explosive remnants of war. It is being used in 4 countries, and it has proven to be an effective and reliable system

Easy to maintain

MEMATT's design facilitates easy access to all parts and components of the vehicle. The technicians who are given the maintenance training can easily apply first level maintenance on the vehicle in time-effective manner.



Easy to operate

With its simple and easily portable remote-control device, it is no logistic trouble for the operator that the operator can dedicate full attention to the task of demining.

It is designed with priority given to making it easy to operate. The flail and tiller attachments can easily be replaced on-site by using the remote controller.

The controller is designed in a way that the operator inputs commands in accordance with operational characteristics and track the progress.

All information and controls are on the remote-controller 11-inches touchscreen tablet computer.

The operator can track all the sensor information while adjusting speed and commanding operation.

The operator enjoys long distance encrypted communication and video transmission from MEMATT's 2 telescopic cameras and 4 side cameras. Operator has seamless 360° view with full visibility on the remote-controller.

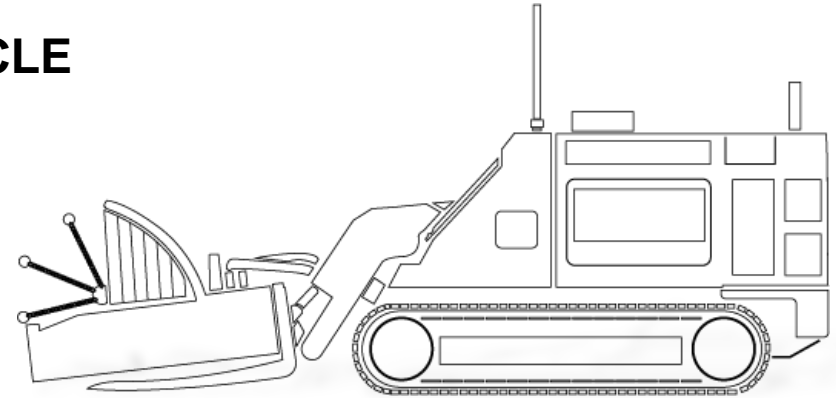
MECHANICAL MINE CLEARING VEHICLE

Length Without Attachments: 4400 mm
Total Length: 6500 mm
Width Without Attachments: 1950 mm
Total Width: 2850 mm
Height: 2,4 m
Mine Clearance Width: 2050mm (Flail)-2000mm (Tiller)
Mine Clearance Depth: >20 cm

Hill Climbing Capability: %60
Side Slope: % 40
Operation Speed: 0.5-1.5 km/h
Fuel Capacity: 250 L
Trench Crossing Ability: 1,5 m
Cooling System: Water Cooled
Transfer Speed: 4 km/h

Boom Arms: S355, Hardox 450
Chassis: 6,5 mm Armox 500T
Attachment Chassis: 6,5 mm Armox 500T
Hood: 6-20mm Hardox 450

Pallets: Steel
Ground Pressure: 0.63kg/cm²
Ground Clearance (Floor to Chassis): 275mm
Power Transmission: Hydrostatic System
Transmission Oil Capacity: 1L
Transport Speed: 4 km/s
Pallet Carrying Capacity: 14.000 kg
Protection Level: Armox 500T
Explosion Resistance: 8kg TNT
Climbing Ability: 60%
Side Slope: 40%
Trench Width: 1.5m
Working Speed: 1900 m²/hour
Working Method: MIL STD 810-G Controller
Communication Distance: >500m
Battery Life: >8 S



Possible Power Sources: 24 V-12 V
Vehicle Information Feedback: Yes
Remote Control Protocol: CAN Bus
Screen: 12 Inch LCD
Video Control System: 3 Ex-Proof 360°
Indicators: Coolant, engine oil and hydraulic oil temperature gauge
Indicators: Fuel, engine oil and hydraulic oil level indicator
Indicators: Engine speed and operating hours indicator
Indicators: Vehicle battery charge and voltage status indicator
Indicators: Battery charge indicator
Indicators: Engine fault codes indicator
Indicators: Vehicle horizontal and vertical tilt indicator
Quick Coupled Type: Quick Kaplin
Attachment Types: Flail, Tiller
Mine Clearance Depth: Up to 30 cm depending on speed and terrain
Flail Number: 42
Tiller Number: 52
Motor Power: 221 kW @ 2500 rpm 300 HP
Portability: 40 HC Container, Trailer, Cargo Plane (C130 or similar), Helicopter
Embedded Systems: 4.3 inch electrical panel display
Embedded Systems: Video Recorder
Embedded Systems: 360° cameras
Rescue Crane: There is a self rescue winch on the vehicle.
Lighting and Beacons: There are front and rear lighting lamps and LED flashing beacons that provide visibility of the vehicle during remote control in dusty environments.

