

PORTABLE WF-VIP JAM7

INTERNATIONAL
ARMOUR
OUR™
www.armour.gr





**HIGH-POWER
PORTABLE JAMMING SYSTEM
WF-VIP JAM7**

HIGH POWER PORTABLE JAMMING SYSTEM WF-JAM7

WF-JAM7, High Power DDS Convoy Jamming System, implementing the most effective and reliable RF jamming technology and equipped with a fully-integrated broadband jamming system.

WF-JAM7 can cover, continuously and simultaneously, all the RF communication Frequencies optional from 20MHz ~6000MHz.

WF-JAM7 is especially easy to install and operate: simply attach the selected antennas and activate the desired frequency bands.

All operating controls and LCD indicators are externally installed.

The unit operates from external battery, or can draw power from AC mains.



Advantages Of WF-JAM7

- Fully portable trolley-type case. High-power multi-band jammer.
- Specially Mil- Spec Pelican case 1610, easier to be moved on some bumpy uneven roads. Rain-proof design
- Adopting digital synthesized technology. Field programmability for rapid adjustment frequency with output Watt.
- Modular construction for easy removal and plug in, maintenance, repair and upgrade.
- Jammer up to 7 different jamming modules simultaneously, and cover up to 28 different frequency bands. Each jamming modules can be reprogrammed to be with four channel frequencies as required. Each module with LCD display to show its working frequency, output power, VSWR, Amper, voltage and temperature. Easier for you to diagnose whether it is normal work or abnormal.
- Each jamming Module with the antenna can be used as a complete unit. All modules can be controlled individually. Plug and Play Programming.
- Equipped with a wired remote control unit. The operator can ON/OFF each module through the wired remote controller.
- Designed with external backup battery input, adapted to external battery. Facilitating to change the battery timely for field -use and extending the equipment's lasting hours.
- WF-JAM7 can be portable and vehicle mounted, which it's biggest advantage in the application.

APPLICATION

Bomb disposal squads, VIP protection, Special Police (S.W.A.T), military security forces, bomb squads, anti-terror units, anti-drug units, border control units, checkpoint personnel, these types of law enforcement personnel who benefit greatly from the deployment of any of these best-in-class portable RF jamming solutions.

They can conduct the law enforcement process more effectively to reduce the chance that the criminals leak the information.

(*) System can also lock also GPS/Glonass

HIGH POWER PORTABLE JAMMING SYSTEM WF-JAM7



Technical Specification

Based on its modular design and configuration our digital jammer can be easily operated, upgraded, serviced, repaired and adapted to its required use.

Digital Jammer modules can be changed easily and quickly just as changing the mobile phone battery.

Different jamming frequency bands can be configured as the customers required immediately.

JAMMER WF-JAM7 Technical Parameters

Frequency Range	20-6000Mhz all the most common RCIED signals
Total RF Power	400Watt at maximum in total for each jamming Case
Power Source	220VAC / 50Hz 24 VDC
Module Number	7 modules for each jamming Case
Channel Frequency	Max: 28Bands for each jamming Case
Cooling System	Systematic Smart Cooling System, heat sink and good ventilation design.
System Protection	VSWR, Over-voltage, Over-current
Jamming Source	Digital Signal Source Synthesize Technology
Jamming Mode	Sweep Technology
Antenna Type	High Gain Omni-directional Antennas/ Directional antenna as required.
Number of Antennas	7 pieces for each Jamming Case
External Battery	With Lithium Iron Phosphate battery. 50AH/24-28VDC to last working around 1 hour.
Jammer Module	Each Jammer module with antenna can be used as a single jammer. All modules are controlled separately.
Jammer Size	58X60X32cm for each jamming case
Jamming Weight	Approx.43kg for each jamming Case
Operating Temperature	-10°C~+70°C
Operating Humidity	Up to 80%

HIGH POWER PORTABLE JAMMING SYSTEM WF-JAM7

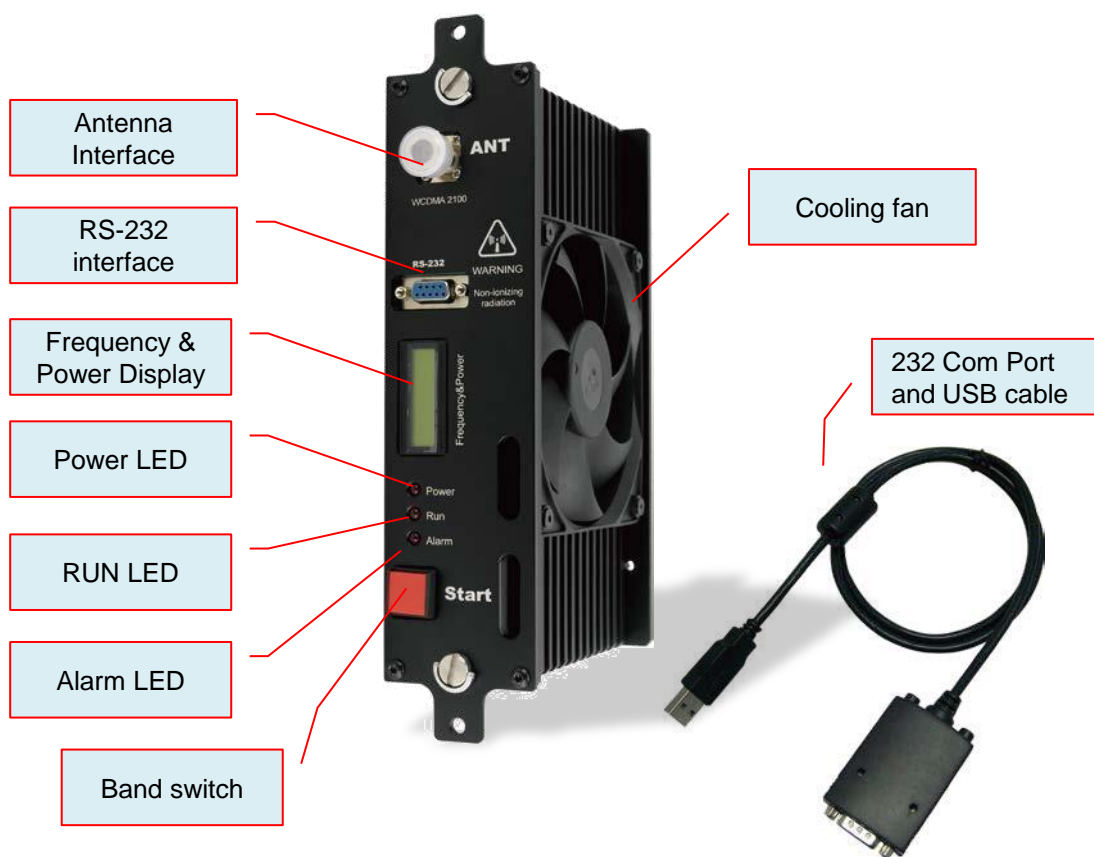
CHARACTERISTIC OF JAMMER MODULES

Each module is designed with three indication lights, to show Power, Run and Alarm (Antennae VSWR feedback status).

Each module is with LCD display to indicate the working frequency, output power and etc.

Each Module is designed with 232 Com Port and USB cable to connected to the computer.

Frequency bands and output power can be adjusted, and the working status can be monitored through this software



BIGGEST ADVANTAGE OF APPLICATION

WF-VIP JAM7 can be portable and vehicle mounted, which it's the biggest advantage in the application. Two units of WF-VIP JAM8 can combine full frequency bands installed in the vehicle, equipped with vehicle mount antennae as required

HIGH POWER PORTABLE JAMMING SYSTEM WF-JAM7

REMOTE CONTROLLER

WF-JAM7 is designed with a wired remote control unit, facilitating the operator to manage each module in any situation.

This remote control unit can also display the external battery level.

Press the channel number to activate the remote control as required.



HIGH POWER PORTABLE JAMMING SYSTEM WF-JAM7

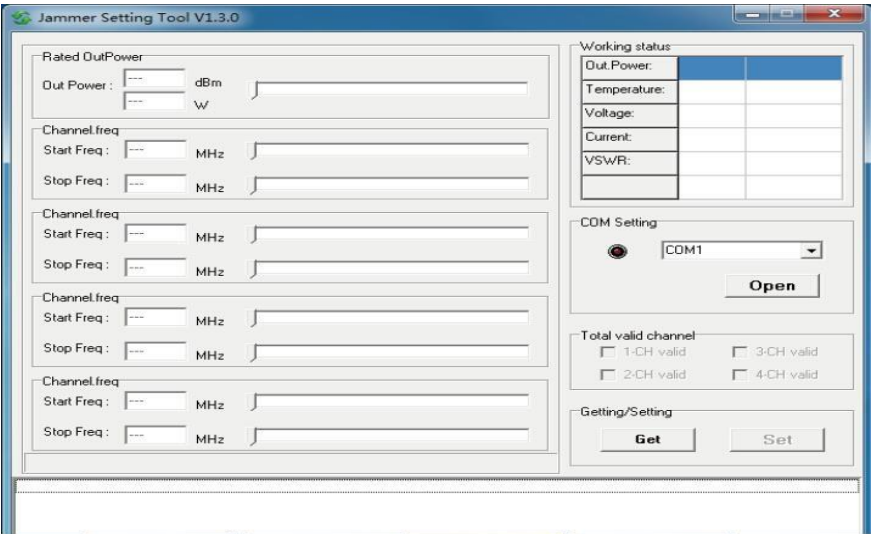


DDS MODULE SOFTWARE INTERFACE

DDS software interface is quite simply.

The operators just move the mouse and then he can set up working frequency bands and output power of the modules.

Each module can be up to 4 channels output at most.





BATTERY TECHNICAL PARAMETER

To warranty the safe operation of the equipment, Lithium Iron Phosphate battery has been selected. It is the most secure battery among the global large capacity batteries currently

EXTERNAL BATTERY SPEC

Item		Model	RFE-8F50
1	Voltage	27V	
2	Internal Resistance	24mΩ	
3	Size	430 (L)* 244 (W)*341 (H)mm	
4	Recharge	0.2C	
5	Discharge	1C	
6	Weight	15Kg	
7	DC Charger	Input: 100-230AC, Output: 29.2V/5ADC	

**HIGH POWER
PORTABLE JAMMING SYSTEM
WF-JAM7**

