

# VEHICLE JAMMING SYSTEM **WF-D24**

INTERNATIONAL  
**ARMOUR**  
**CO.**™  
[www.armour.gr](http://www.armour.gr)





## High Power Multi Band **WF-D24** VEHICLE JAMMING SYSTEM

### **Introduction**

Protecting military and VIP convoys from the threat of Remote Control Improvised Explosive Devices (RCIEDs) -road-side bombs and anti UAV have become challenge and task in many parts of the world.

WF-D24 JAM, High Power DDS Convoy Jamming System, implementing the most effective and reliable RF jamming technology and equipped with a fully-integrated broadband jamming system.

WF-D24 JAM can cover, continuously and simultaneously, all the RF communication Frequencies 20MHz ~ 6000MHz which are most commonly used by terrorists to detonate road-side bombs (RCIEDs) and fly the drones.

Adopting the latest jamming technologies, WF-D24 JAM features ultra-high RF transmission power of 1500 watts, making a bigger shielding range around the vehicle.

System management, including activation and control and operation is carried out through a wired remote control unit installed covertly inside the driver's console unit.

Once the system is activated, it transmits unique noise signal which creates "Firewall" between the transmitter (terrorist) and its receiver (explosive device). Effective eighteen-month warranty and technical support is indispensable to make sure our excellent quality and reputation.

## Advantages Of WF-D24 JAMMER

Designed with ultra-broadband frequency bands, 20-6000MHz.

- 24 modules plug and play design, facilitate for future power upgrading, change and maintenance. Any ruin on the modules never interfere the normal operating for other modules.
- USA Mil-spec standard case, shockproof and drop-resistance, available for the vehicle running in a worse field environment.
- Up to 24Frequency Bands. All Jamming Modules Designed by DDS technology.
- Operators can regulate the working frequency band and output power of each module through the software. Configuring a specific frequency band can ensure the internal communication in emergency.
- System operation can be performed in the driver's console unit. Each module can be ON/OFF. Backup battery is included.
- Device body is approx. 150kg.
- Integrated smart active cooling system to make sure the device working continuously.
- Continuously and simultaneously interference to commonly used RF signals. Each module is designed with a separate mil spec switch for ON/OFF control
- With a waterproof digital wired remote control panel to ON/OFF all the jamming modules separately in a remote place.
- Integrated smart active cooling system to make sure the device working continuously.
- With 6 sets of antennae folders on the roof antennae platform for a flexible antenna folding system, mounting up and laying down can be managed by a control unit.

It can ensure the system to move in any kind of low bridge and low positions as long as the car can move forward.

- With a dual 13.5Kw power alternator driven by the car engine, to ensure the vehicle Jamming system to be noiseless, no waste, taking less space from the car drunk in a continuous operation.

It can also supply enough electricity to the other equipment on the Vehicle besides feeding the jammer.

- Systems racking mounts can be expandable, with more flexible modules combination to ensure the best jamming performance.

In terms of clients' requirement, 12 bands/18bands/24bands racking mounts are available for the customers.



## **Main Application**

Protect military and VIP team from the road-side remote improvised explosive device (RCIED) attack detonated by the terrorists. Moreover, it can prevent terrorists using GPS location to track the vehicles efficiently.

Used for EOD. Before EOD, wireless telecommunication signals surrounding the bomb must be blocked effectively to prevent the terrorists detonating the bomb through the wireless remote control devices and avoid the huge casualties.

It can be applied that commonly used telecommunication frequency will be blocked when the Police arrest the criminals in order to prevent the criminals gang or Police insider leaking the confidence through the wireless equipment to lead the arrest failure.

It also makes the criminals not be able to remotely control the bomb in the key entrance of the building so that Police can quickly access to the building and round up the criminals to avoid the casualties.

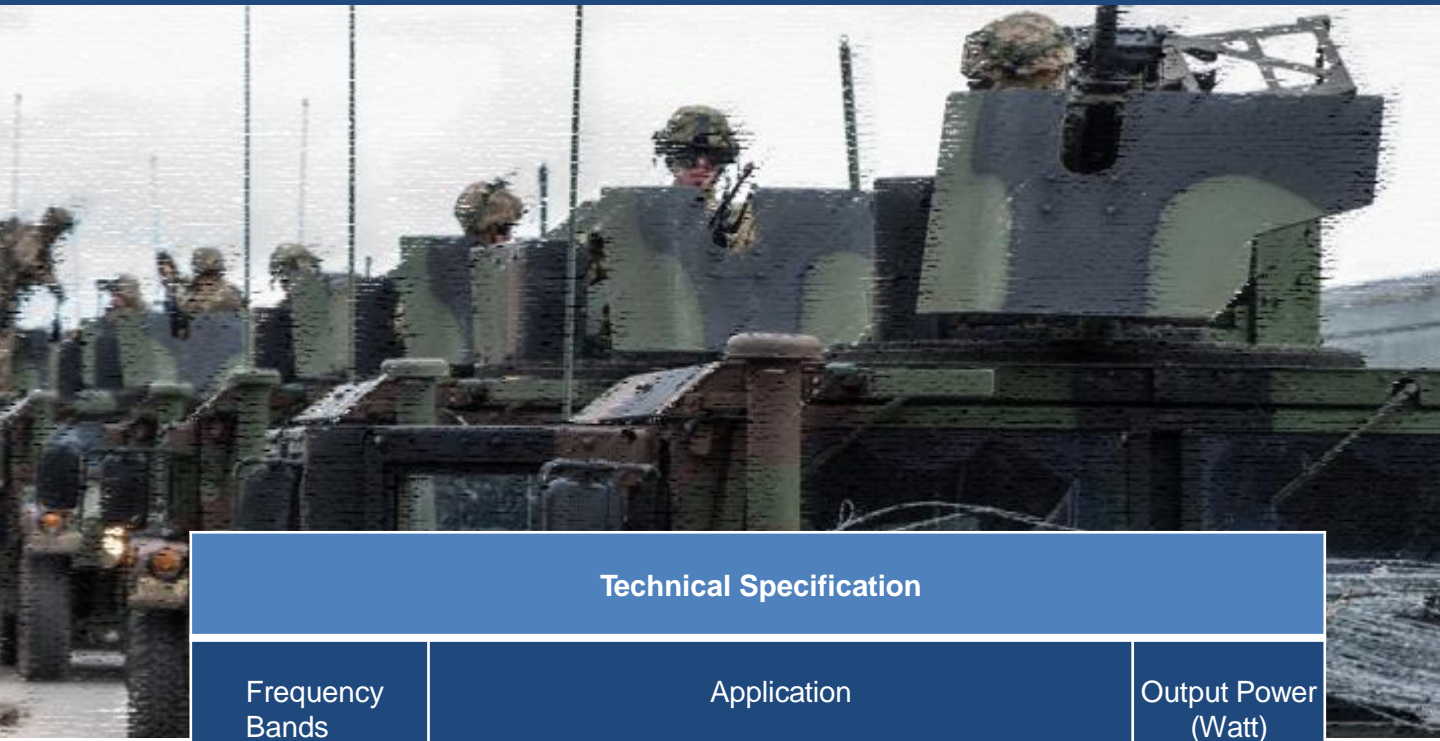
Protecting the boarder and army patrol from the attack of road- side bomb RCIED detonated by the terrorists.

It can be used to prevent terrorists remotely controlling the bomb bursting points in military protection zone, government buildings and some other important places. It can also make the criminals hidden in the military protection zone not communicate with the outside gang to leak the confidence.

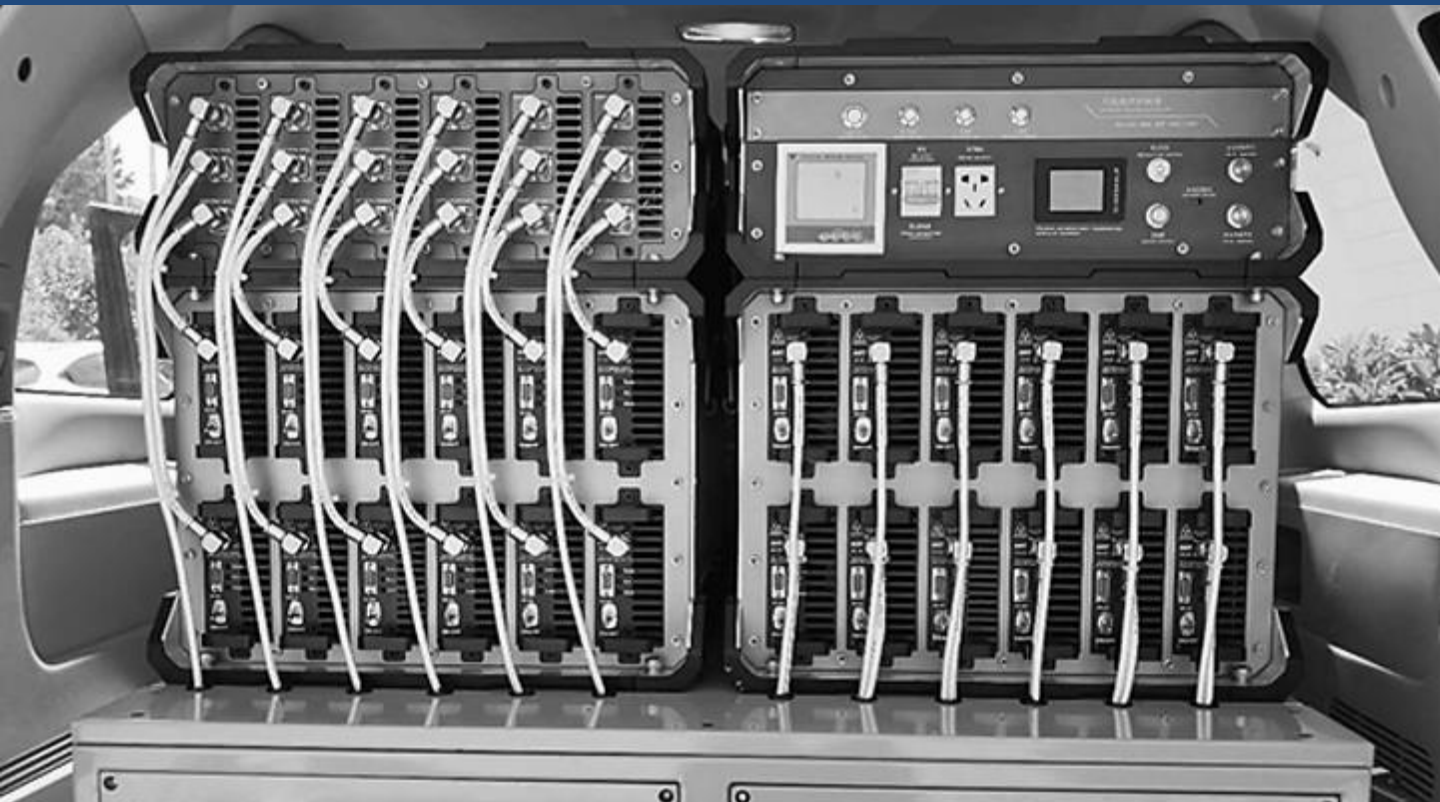
In the event of the partial ground war, this wireless jamming system can prevent the enemy laying the bomb detonated by the wireless remote control in advance. In order to protect the land surface chariot attacking troops, Tank and soldiers' lives.

It can be also fixed in some occasion for a temporary protection to respond to some emergencies.





Technical Specification		
Frequency Bands	Application	Output Power (Watt)
20-100	Cordless Analog Phones, CB, Wireless Toys etc.	80
88-108	FM	100
135-174	Cordless Analog Phones, VHF, Radio	100
300-500	UHF, Radio	100
465-530	Remote control.	100
310-470	Car remote control, toy remote control, door alarm, drone remote control.	100
425-461	Remote Control	50
840-870	Drone remote control	100
900-930	Drone remote control	100
1300-1400	Remote Control	50
1400-1520	GPS Signals	50
1520-1670	GPS, Satellite phone, Thuraya, GPS navigation systems	80
1805-1880	GSM1800	50
1805-2000	DCS, LTE1800	100
1805-1990	PHS, GSM1900	100
2000-2200	WCDMA2000,3G,UMTS	100
2100-2170	WCDMA2000,3G,UMTS	100
2400-2500	WIFI/Bluetooth, Video transmission and drone remote control	80
2400-2500	WIFI/Bluetooth, Video transmission and drone remote control	80
2300-2700	LTE2300,WIFI/Bluetooth,LTE2600	80
3400-3600	Cellular 5G Signals	15
5100-5350	Wimax,5G,UAV video transmission and remote control signals.	50
5725-5850	Wimax,5G,UAV video transmission and remote control signals.	50
5725-5850	Wimax,5G,UAV video transmission and remote control signals.	50



Total : 24 bands (It can be up to 80 sub bands)		Up to 1500watt
Frequency Range	20 - 6000MHz optional as required	
Total RF Power	1500Watt	
Jammer Module Number	24modules	
Channel Number	80Bands, Max:96Bands	
Cooling System	Systematic Smart Cooling System	
System Protection	VSWR, Over-voltage, Over-current	
Special Design feature	Rainproof design	
Housing Design	Flexible Racking Mounts combination design.	
Jamming Source	Each racking mount is with 6 jamming modules inside	
Remote Control	(If it is 24 modules there will be 4units of racking mounts incorporated into the system)	
Antenna Type	Digital Signal Source Technology	
Number of Antennas	Full System Operation Control	
Total Power Consumption	Omni directional Antennas	
Power Supply System (Optional)	With a roof antennae platform system	
Equipment Net Weight	All the antennae are integrated into this platform. It will have a flexible folding system, it can be mounting up or lay down via a antennae control panel, which is installed inside the driver's cabin.	
Equipment Size	24 units	
Operating Temperature Range	Still determined by the required modules quantity and jammer configuration.	
Operating Humidity	Maximum 6000watt (24 modules)	





## Machine Body

WF-D24 JAM adopts DDS technology, fully sweeping the jamming frequency bands so that it results in a more efficient jamming and longer shielding coverage.

Enclosed with USA Mil-spec Case, dustproof, shockproof and drop-resistance. Single module design makes easier maintenance. Any module with damage can be took off and changed easily. It will not interfere the other modules' normal working.

*Dual Power  
Alternator System  
integrated in the car  
engine*





### **Wired Remote Control Panel**

WF-D24 JAM has a wired remote control function. And this remote control panel could be performed in the driver's console unit, so it will be very convenient for the driver to remote control the jammer to turn on/off each module separately while driving.

With two units of remote control panel to management of 24 modules, the driver can turn off a specific frequency band to make sure the internal communication in emergency.





## Antennas

### High Power Wideband VHF Antenna

Product Code WF210-18-200  
Frequency range 20-100MHz  
Input Impedance 50Ω  
Main Frequency VSWR <2.5  
Gain -3~2dBi  
Maximum Power 200Watt  
Polarization Vertical Polarization  
Temperature -40°Cto+75°C  
Radome Material Fiberglass  
Connector Type N-K  
Lightening Protection: Direct Ground  
Wind Velocity 160Km/h  
Length About 1810mm  
Weight About 2.8Kg

### High Power Wideband VHF Antenna

Product Code WF210-95-200  
Frequency range 100-300MHz  
Input Impedance 50Ω  
Main Frequency VSWR <2.5  
Gain 1~2dBi  
Maximum Power 200Watt  
Polarization Vertical Polarization  
Temperature -40°Cto+75°C  
Radome Material Fiberglass  
Connector Type N-K  
Lightening Protection: Direct Ground  
Wind Velocity 160Km/h  
Length About 950mm  
Weight About 2.6Kg

### High Power Wideband VHF Antenna

Product Code WF3050-88-200  
Frequency range 300-530MHz  
Input Impedance 50Ω  
Main Frequency VSWR <2.5  
Gain 1.5~3dBi  
Maximum Power 200Watt  
Polarization Vertical Polarization  
Temperature -40°Cto+75°C  
Radome Material Fiberglass  
Connector Type N-K  
Lightening Protection: Direct Ground  
Wind Velocity 160Km/h  
Length About 880mm  
Weight About 2.5Kg

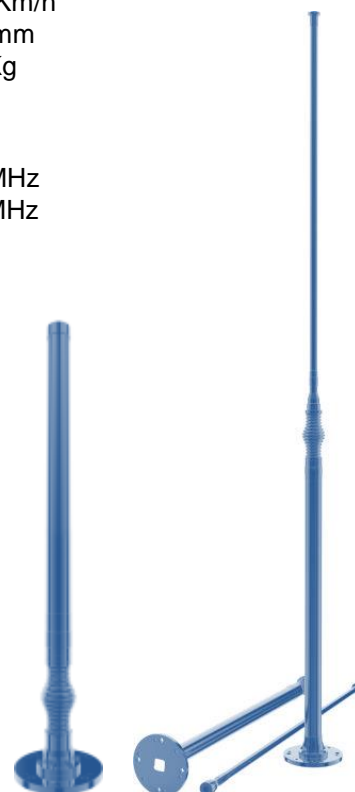
### High Power Wideband High Band Antenna

Product Code: WF8090-80-200  
Frequency range 800-1000MHz  
Input Impedance 50Ω  
Main Frequency VSWR <1.5  
Gain 5~7dBi  
Maximum Power 200Watt  
Polarization Vertical Polarization  
Temperature -40°Cto+75°C  
Radome Material Fiberglass  
Connector Type N-K  
Lightening Protection: Direct Ground  
Wind Velocity 180Km/h  
Length About 800mm  
Weight About 2.1Kg

### High Power Wideband 1Ghz-6Ghz Antenna

Frequency range: 1000-1300MHz / 1800-2200MHz / 3400-3600MHz  
1500-1700MHz / 2300-2700MHz / 5500-6000MHz  
Input Impedance: 50Ω  
Main Frequency VSWR: <1.5  
Gain: 5~7dBi / 7-8dBi / 8-10dBi  
Maximum Power: 200Watt  
Polarization: Vertical Polarization  
Temperature -40°Cto+75°C  
Radome Material Fiberglass  
Connector Type N-K  
Lightening Protection: Direct Ground  
Wind Velocity 180Km/h  
Length About 650mm  
Weight About 2Kg

**The jamming range is determined by the local signal strength. Under the worst situation, the jamming range is 300M radius for the mobile phone signals.**



**INTERNATIONAL ARMOUR**  
DEFENSE & SAFETY  
173 Amfitheas Avenue  
17563 Athens, Greece  
T: +30 211 2213528E:  
info@armour.gr  
www.armour.gr



UNGM MEMBER



NATO  
REGISTER



**ICoC**  
SIGNATORY