

INTERNATIONAL
ARM
OUR ⁱ _{TM}
www.armor.gr

360°

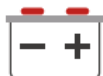
Infrared Panoramic E.O.S



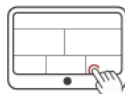
Small, lightweight, portable
The size is only 161x205.5x290.5mm



Wireless transmission, instant connection
Wireless transmission distance up to 50m



Mobile power supply
8 hours of outdoor mobile patrol



Tablet control
Equipped with mobile tablet, support touch operation



Product type		XSENTRY-UM619B		XSENTRY-UM625B	
Infrared Panoramic E.O.S Hardware					
Detector type		Uncooled			
Detector resolution		640×512			
Focal length		19mm		25mm	
Panoramic image resolution		9900×512		13000×512	
360 Degree scanning speed		0.61Hz		0.48Hz	
180 Degree scanning speed		1.23Hz		0.92Hz	
Horizontal FOV		360°			
Vertical FOV		18.4°		14°	
Vertical adjustment range		±5°			
Ingress protection		IP66			
Dimension (L×W×H)		161×205×290.5mm			
Weight		5.1kg			
Max. Operating temperature range		- 40℃~+50℃			
Detecting distance	People (1.7m)	600m		750m	
	Vehicle (4m)	1200m		1500m	
Detachable battery					
Battery capacity		24V6Ah(Equipped with 2 batteries)			
Wireless transmission					
Transmission mode		wifi			
Transmission distance		50m			
Portable Operation Panel					
Operating system		Windows			
Size		10.1 inch			

Model	Type	Focal length
	XENTRY-UM3 384x288/uncooled	13mm、19mm、25mm
	XENTRY-UM6 640x512/uncooled	13mm、19mm、25mm
	XENTRY-UM6-B 640x512/uncooled	19mm、25mm

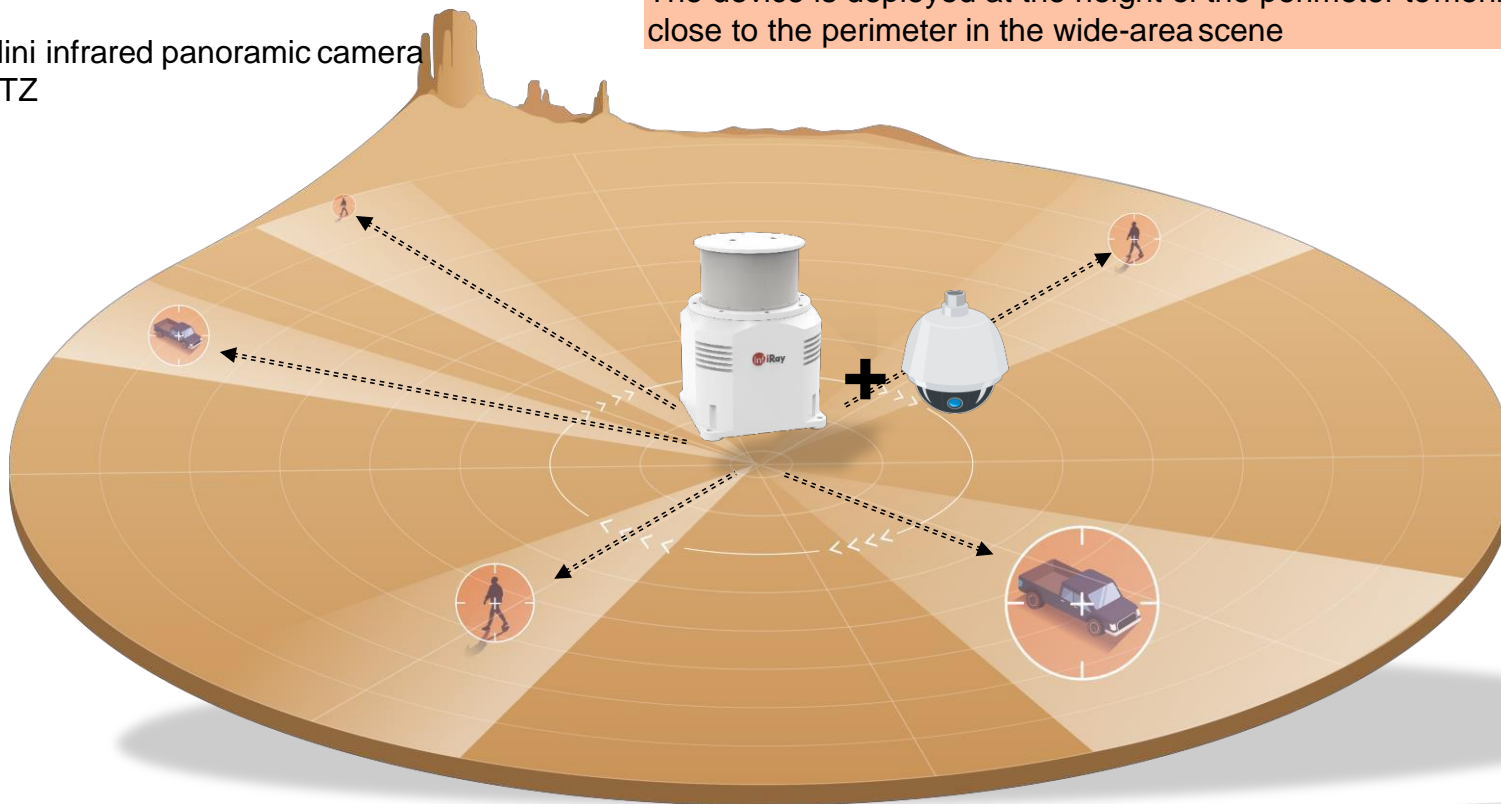
Fixed perimeter surveillance



Product solutions:

- 1 Mini infrared panoramic camera
- 2 PTZ

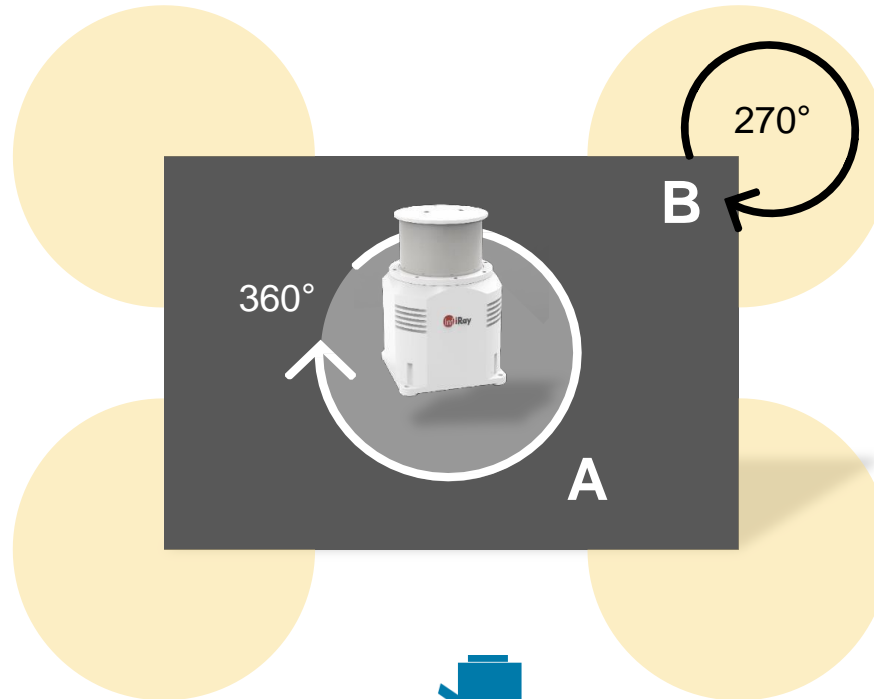
The device is deployed at the height of the perimeter to monitor all targets close to the perimeter in the wide-area scene



Product advantages:

- 360° wide-area panoramic coverage
- Multi-target real-time tracking + trajectory visualization
- Passive infrared detection, good concealment
- The 25mm model has a maximum detection distance of 750m for people and 1500m for vehicles.

Perimeter Subdivision Application



A. Open perimeter with 360° coverage

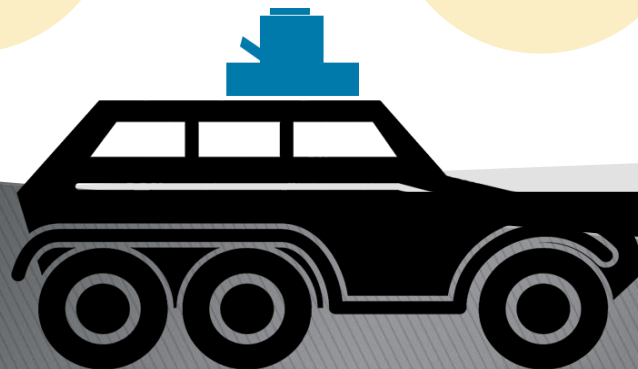
B. Corner peripheral perimeter, coverage ranging from 90°-360°

Subdivision scene:

- Gas station
- Airport perimeter
- Stationary outpost camp
- Prison perimeter



PORTABLE



ON VEHICLE

Mobile Patrol



With the mobile Mini infrared panoramic camera, it can meet the requirements of rapid deployment of mobile patrol



Mini series lens (25mm)

- Detection distance for human can up to 750m
- Detection distance for vehicle can up to 1.5km

Wireless transmission

Support transmission distance up to 50m

Mobile battery

The working time of a single mobile patrol can reach 8 hours

Mobile console

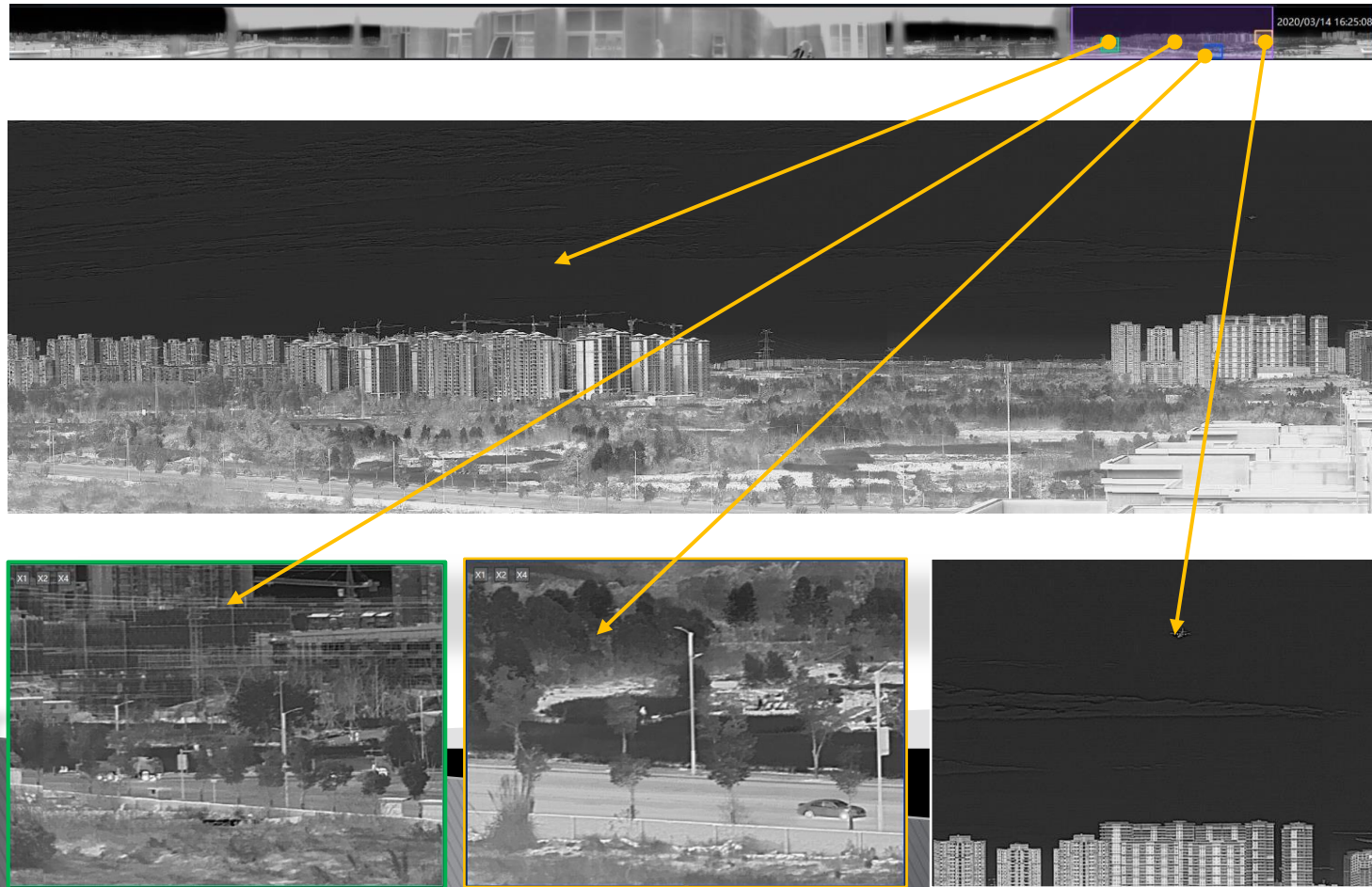
Support mobile touch operation, control

Diversified Preview Modes

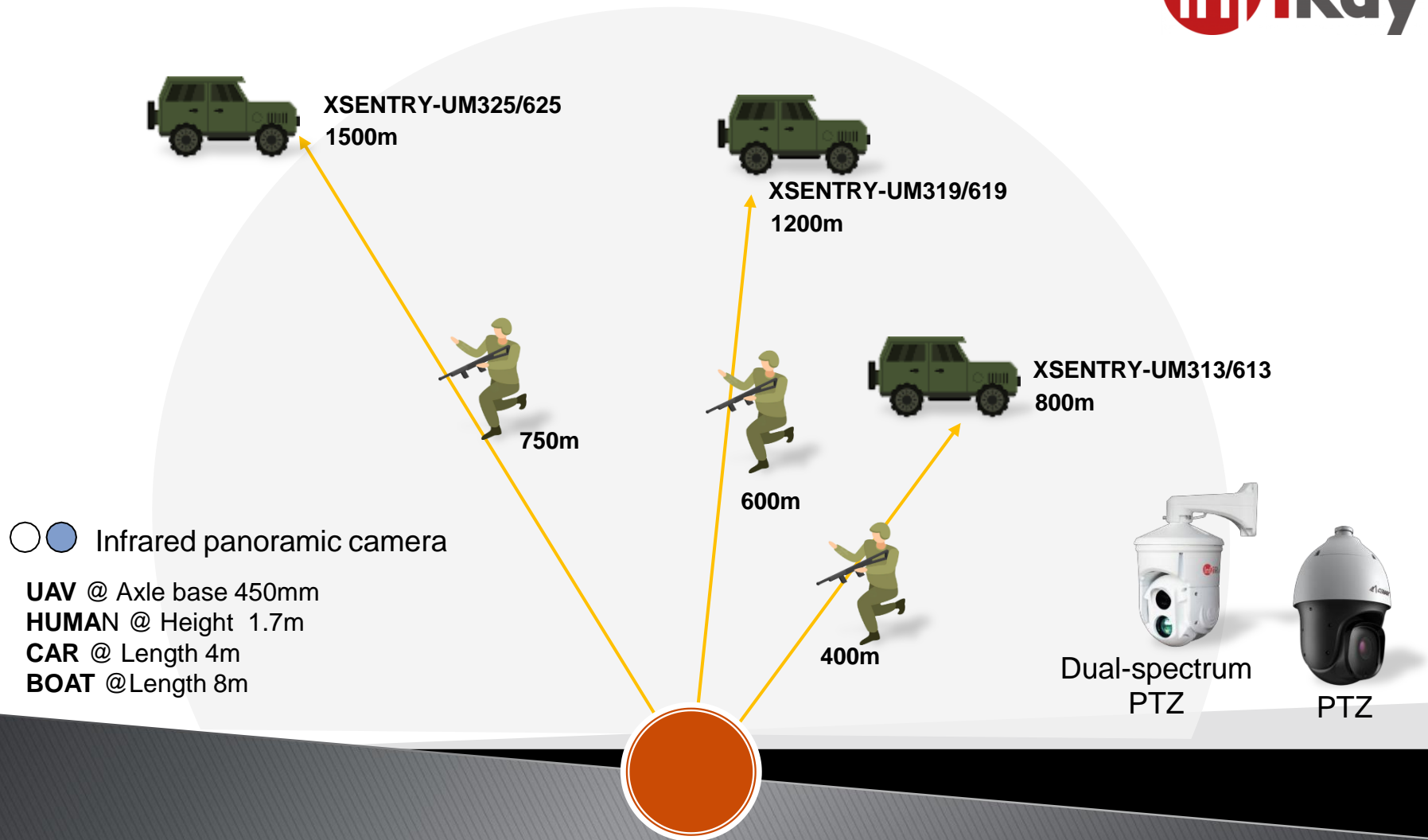


Diversified preview modes, real-time monitoring of all corners around the perimeter

Panorama Overview



Detection Distance (Mini E.0 + intelligent PTZ linkage)



Infrared panoramic camera support tracking the targets and zooming in images of the targets by combining with PTZ, and collect the information related to videos and images and obtain relevant evidence, thus visually presenting the information of targets once the targets are detected.

It helps provide strong reference information for the decision-making and command staff.

