

## Vidar Speed – Cameras for Speed Measurement and ANPR

## Imaging

	Vidar Speed 2xFHD LT	Vidar Speed 5MphDx LT
Resolution	Sensor 1&2: 2048x1536	Sensor 1: 2432x2048 Sensor 2: 1440x1080
Max FPS	60 @ 1080p	45 @ 3MP on sensor 1 or 120 @ 720p on sensor 2
Sensor	Sensor 1 & 2: Color, Global Shutter	
Day/Night switch	Automatic brightness control with predefined traffic environments or manual	
Lens	Motorized zoom and focus, remotely adjustable	
Lens mount	Custom mount	
Angle of View	Optics 1&2: Wide: 26.5° x 20° Tele: 8.1° x 6.1°	Optics 1: Wide 25.1° x 21.3° Tele: 7.7° x 6.4° Optics 2: Wide: 55.7° x 43.2° Tele: 3.4° x 2.5°
Optical Zoom	Optics 1&2: 3.3x	Optics 1: 3.3x Optics 2: 18x
Focal length	Optics 1&2: Variable, 15 – 50 mm	Optics 1: Variable, 15 – 50 mm Optics 2: Variable, 4.8 – 84.6 mm



On-Board ANPR+MMR, powered by:

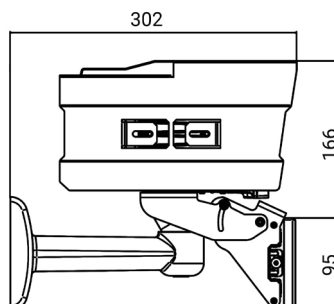
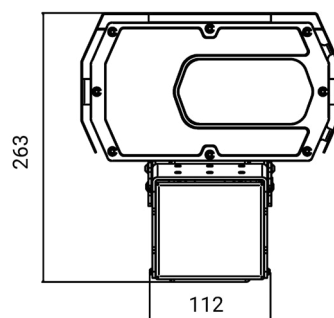
## Distance ANPR Range

Optimal ANPR range at ambient light	15 m – 30 m (50 feet – 100 feet)	
Maximal ANPR range at optimal conditions	40 m (131 feet)	50 m (164 feet)
Maximum ANPR range at "0" lux*	35 m (115 feet)	
Vehicle speed range (at optimal conditions)	0 km/h – 320+ km/h / 0 mph – 199+ mph	
Maximum road width covered (at standard license plate size)	8 m (26 feet)	10 m (33 feet)
Maximum number of lanes	2	

\* In the case of reflective license plates

## On-Board Intelligence

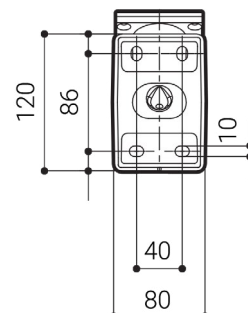
Carmen on-board ANPR	✓
ANPR Cloud compliant	Coming soon
GDS compliant	✓
MMR + Color	✓
Vehicle category	✓
Video analytics	License plate detection, vehicle direction detection, category
ADR Recognition	✓



## Radar

Vehicle speed data	METAS-certified
Measurement range	0 – 320 km/h (199 mph)
Measurement accuracy	±1 km/h (0.6 mph) or ±1 % (the bigger of)
Object tracking	Position, direction, angle, speed
Measurement frequency	24 GHz*
Sample rate	75 ms
Maximum number of lanes covered	4
Maximum number of objects tracked simultaneously	64

\*77 GHz variant is also available



**3-year warranty**  
**Made in EU**

Technical specifications are subject to change without prior notice. This document does not constitute an offer



# Vidar Speed – Cameras for Speed Measurement and ANPR

## Illumination

	Vidar Speed 2xFHD LT	Vidar Speed 5MpHDx LT
Wavelength	850 nm	
Illumination modes	Synchronized or continuous	
Illumination beam-angle	22°	
Variable intensity	Adjustable in 100 increments, parity flash (different intensity for odd and even frames)	

## Processing & I/O

ANPR Processing unit	ARM 64-bit Quad-Core @ 1.4 GHz	
Communication protocols	ONVIF, ARP, TCP/IP, DHCP, NTP, FTP, HTTP, RTSP, HTTPS, SFTP, DNS, SNMP, SSL/TLS, NTCIP	
I/O ports	12-pin (UART/GPIO/USB/RS232)	
In-built Laser Trigger	8 mRad Point Laser	
Laser wavelength & safety class	905 nm CLASS 1 (60825-1 2014)	
Radar for triggering	Optional, 77 GHz MultiLane Radar	
Certified vehicle speed data	Optional	

## Storage

Internal storage size and type	32 GB* SSD	
Stored number of events (Internal)**	approx. 50000	approx. 40000
Event package size for external upload**	350 - 500 kB	400 - 550 kB
External storage type	FTP, SFTP, HTTP, HTTPS	

\* Internal storage: max. 1 TB SSD (available upon request)

\*\*With default settings

## Electrical Data

Power requirement	24 - 28 V AC*, min. 2.5A	
Typical power consumption	24 W	26 W
Maximum power consumption	60 W	65 W

\*36 V DC when a common ground is used with external illuminator

## Mechanical Data

Operating temperature*	-45°C – +70°C (-49°F – +158°F)	
IP&IK rating	IP67, IK10 (additional accessory component required)	
Dimensions (with bracket) L x W x H	302 x 252 x 263 mm / 11.89" x 9.92" x 10.35"	
Weight (with bracket)	5.7 kg / 12.56 lbs	
In the box	Camera, radar, bracket, shield	

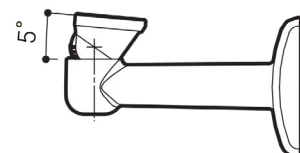
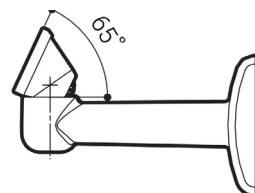
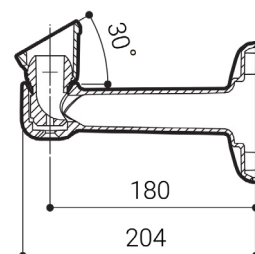
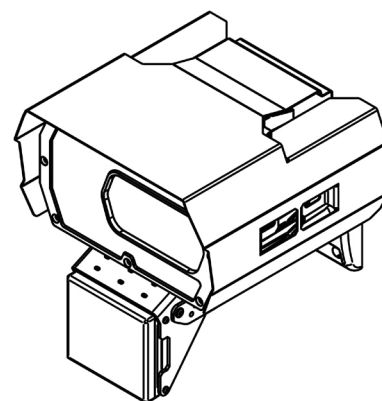
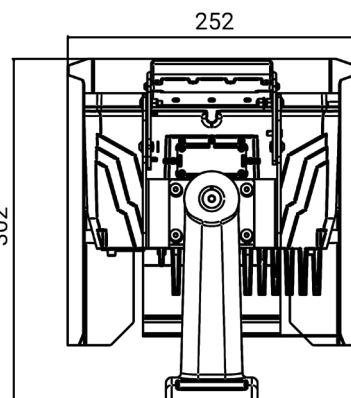
\*Internal

## Accessories

M12 power cable, Ethernet cable, Junction Box, External illuminator
---

## Certificate

Made in EU, NDAA compliant
----------------------------



Technical specifications are subject to change without prior notice. This document does not constitute an offer

**3-year warranty**  
**Made in EU**