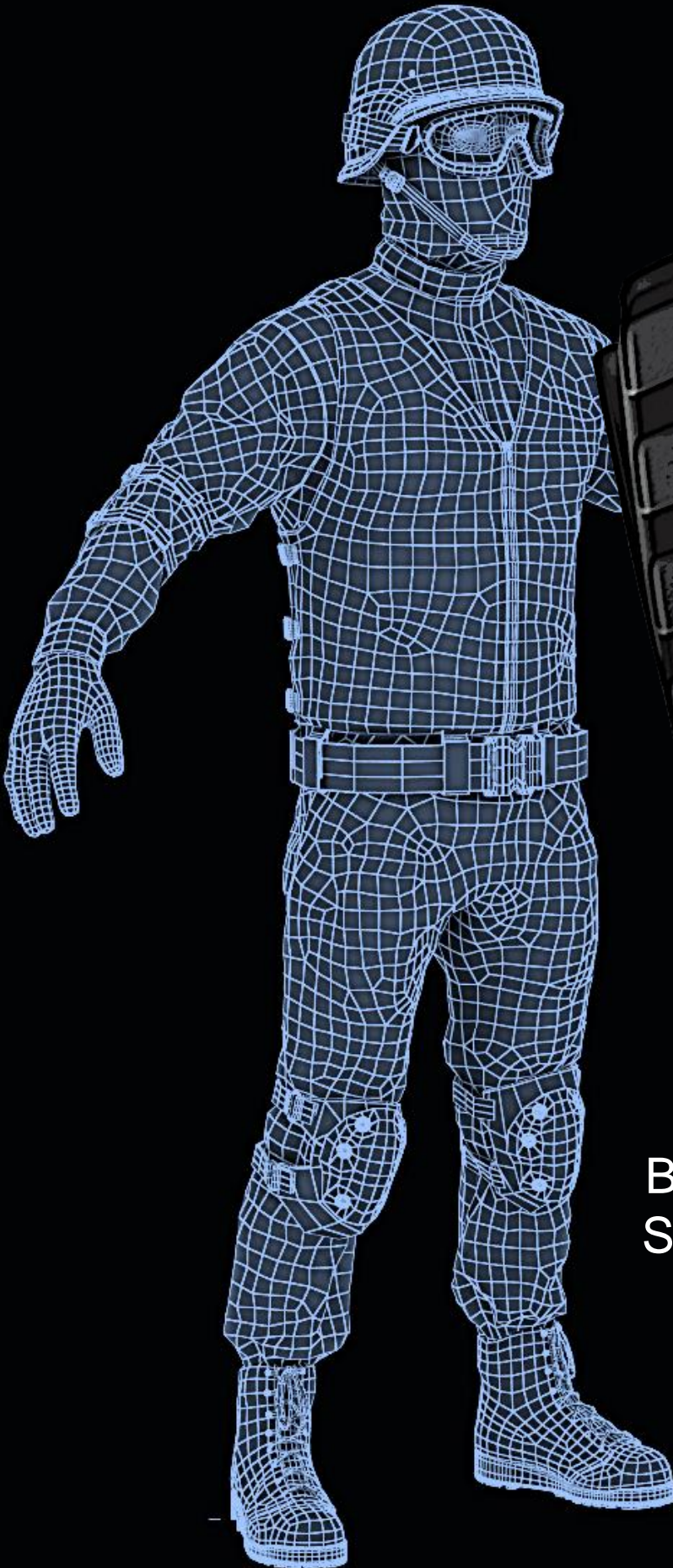


T2+



BODY CAMERA &
SMART DOCKING
STATION
PRODUCTS



T2+ BODYCAM



Complete device set

Product	Zepcam T2+
Code	T2-BC2P
Description	Compact Full HD bodycam for recording of video, audio and GPS. Up to 12 hours battery life time. Standard T2+ includes charger, single dock, usb cable and clip mount. Storage: 64GB, weight: 115 gram, dimensions: 72x56x24mm



The Zepcam T2+ bodycam is developed for all round professional use. The integrated backend for video offload and video management makes the T2+ bodycam a complete and robust solution. Captured video, audio and GPS are offloaded via a secure transmission to the Zepcam Cloud server, your on premise server and can be integrated with 3rd party software.

The ruggedized T2+ bodycam is perfect for use in law enforcement, security, first responders, public transport and industry.



REDUCE AGGRESSION

A visible worn bodycam helps to reduce aggression.



CAPTURE VIDEO

Compact, robust and easy to use bodycams



GATHER EVIDENCE

Video is highly effective evidence in case of incidents.



DOCK AND UPLOAD

Docking station for data exchange and fast re-charge



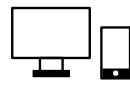
SECURE STORAGE

Store and manage on the Zepcam Cloud or your On-Premise server



COMPLETE SOLUTION

Flexible & integrated solution: from bodycam to client-software.



VIEW AND MANAGE

Zepcam software or 3rd party videomanagement systems

T2+ BODYCAM



T2+ BODYCAM



T2+ BODYCAM SPECIFICATIONS

Video quality	HD (720p), Full HD (1080p)
Video format	MP4, H.264
Photo format	Max. 16MP, JPG
IP class	IP 65 (rain & dust proof)
Angle of view	140 degrees
Audio	Built in microphone
Storage	64GB internal storage
Recording time	9 hours
Night view	Built in Infrared light
Encryption	AES 256 encryption
Size	72x56x24 mm (HxWxD)
Weight	115gram
Mounts	Various

DOCKING STATION SPECIFICATIONS

Capacity	4 or 8 bay docking station
Charging time	4 hours
Connection	Gigabit ethernet to server
Buffering	Onboard SSD storage
Software	Standalone (integrated with backend software)
Power	30V (6W idle 50W full charge)
Status	LED feedback status bodycam
Authentication	Bodycam or officer ID configurable
Encryption	AES 256 bit encryption
Size	70x640x90 mm (HxWxD)

T2+ BODYCAM



Docking stations			
Product	T2 series Docking Station 4 Bay		T2 series Docking Station 8 Bay
Code	256 GB T2-DS4-21	256 GB T2-DS8-21	512 GB T2-DS8-22
Description	The Zepcam T2 series docking station is capable of docking up to 4 bodycams. The docking station takes care of fast charging T2 bodycams, offloading video data and transferring data to the server. 256GB local storage.		The Zepcam T2 series docking station is capable of docking up to 8 bodycams. The docking station takes care of fast charging T2 bodycams, offloading video data and transferring data to the server. Available with 256GB and 512GB local storage.



Flexible ID option

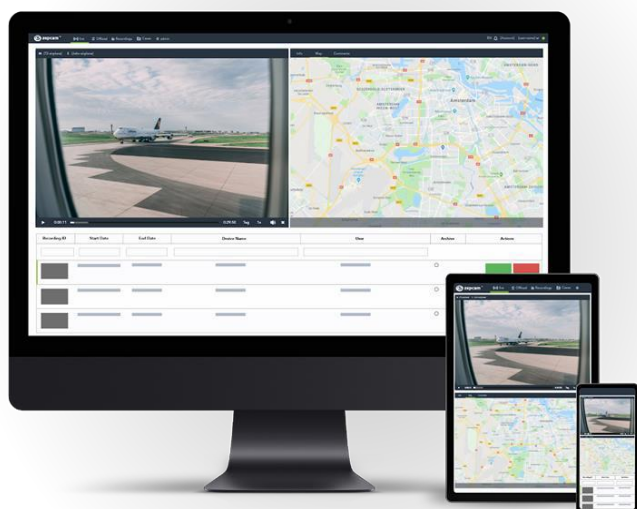
Docking Station Monitor

Docking Station Keypad

T2-AC2

T2-AC1

In order to use the Zepcam bodycams with flexible user ID the Docking Station Monitor and Docking Station Keypad are required. When taking a T2 Bodycam from the docking station the user enters the user ID on the keyboard to connect camera ID to user ID.



ZEPCAM Stand Alone

By making use of this smart NUC based solution you can run your ZEPCAM solution without needing access to internet.

Carry your own database and ZEPCAM Manager suite in a ruggedized hard case, just hook on your laptop and you are ready to manage your body camera supported operation in even the most remote areas.

ZEPCAM Cloud

Zepcam Cloud is our standard cloud-based solution to run Zepcam Manager and enables you to remotely manage all your body cameras.

It is fast, efficient and easy to use.

Managed and hosted by Zepcam. Zepcam Cloud can easily be integrated with existing video management systems using our API.

View and manage all your cameras, fixed and mobile, in the software, your organization is used to and has invested in.

ZEPCAM On-Premise

For security or management reasons you may opt for own server based solutions.

For this we can assist you with Zepcam On-premise.

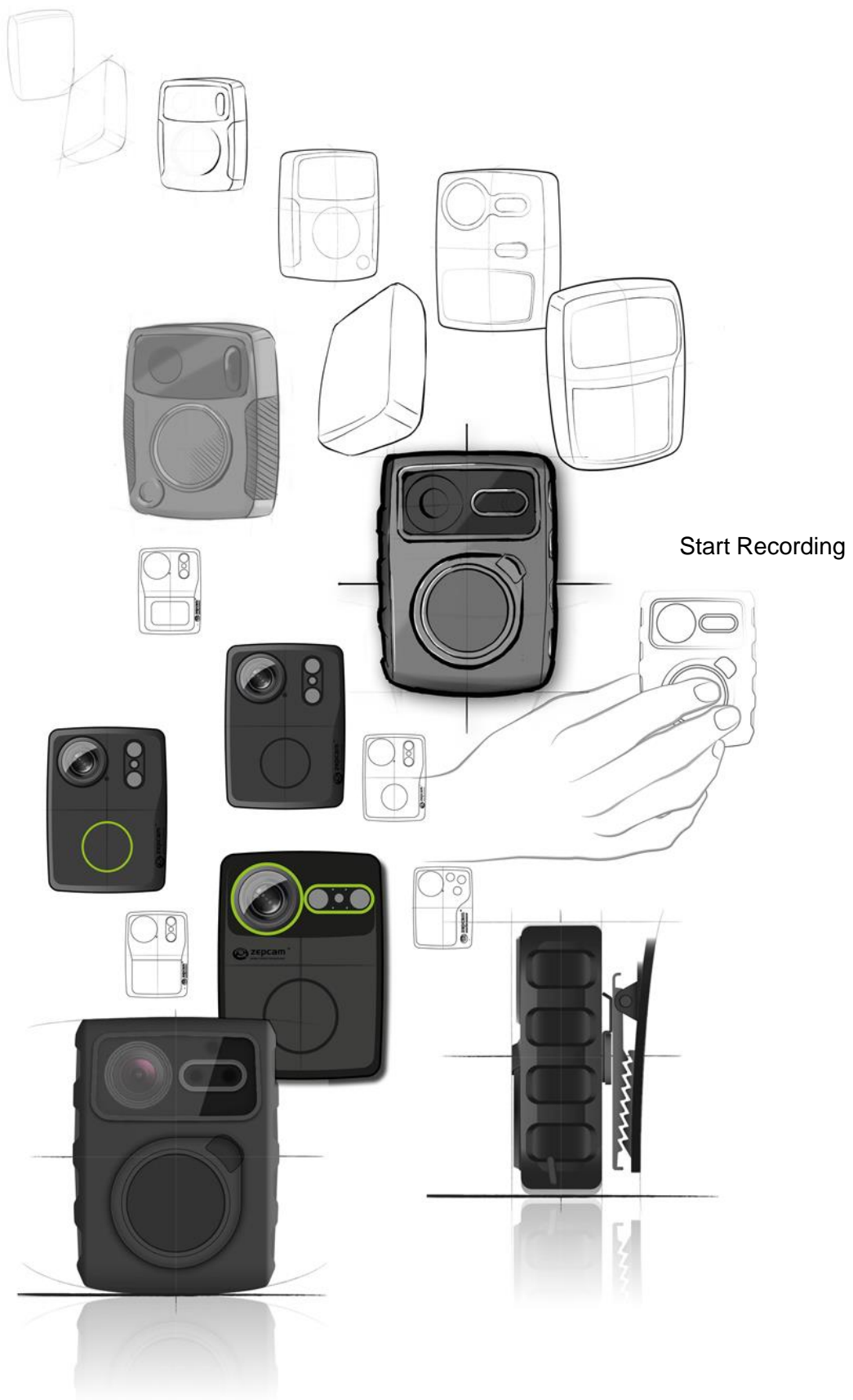
A tailored solution to let you run Zepcam Manager on your own hardware

ZEPCAM Integration

We can link our solutions to your existing management software.

Zepcam has integrations with the leading Video Management Systems like Genetec Security Center, Milestone, Cisco VSOM, OnSSI/Seetec and several others

T2+ BODYCAM



Zepcam T2 Docking Station 8 bay & 4 bay.

Product Code

T2-DS8-21 / T2-DS8-22

T2-DS4-21



Docking Station type	8 Position	4 Position
Functionalities	Charging Zepcam T2 Bodycams	
	Recordings and data transfer from the T2 to the Zepcam Manager	
Supported cameras	Zepcam T2 (T2-BC1, T2-BC2)	
System setup	Minimal setup: <ul style="list-style-type: none"> • Docking station connected to server via internet connection or local network. • Docking station connected to external power supply. • The external power supply is connected to a power socket. Extended setup: <ul style="list-style-type: none"> • Docking station connected to HDMI display. • Docking station connected to USB keypad. 	
Security	The recordings are transferred from the T2 to the internal AES256 encrypted SSD. When the recordings from the SSD are transferred to the server this is done with an encrypted AES256 link. T2 cameras are authenticated by the server.	
System settings	On board website configurable settings: Hostname, timezone, onboard password, IP protocol (fixed or DHCP client), (fallback) IP address, Netmask, Gateway, DNS, Alternative NTP server, 4 Interface aliases, direct offload (skip SSD), Ethernet speed.	
System functionalities	Factory reset: restores system to factory settings. Format storage: erase internal SSD storage. Download and restore backup: Save and download docking station settings and restore these later. Upload firmware: Manual firmware update with a .bin file.	
Updates	Software updates via firmware updates via Zepcam Manager Software	
User ID entry	Static and Dynamic User ID entry via USB keyboard. Feedback displayed via HDMI screen.	
LED indicators	For each bodycam there is a status LED for charging, offloading, error and fully charged	

Zepcam T2 Docking Station 8 bay & 4 bay.

Product Code	T2-DS8-21 / T2-DS8-22		T2-DS4-21
<div><div></div><div></div></div>			
Docking Station type	8 Position		4 Position
Dimensions	642x92x70 mm		332x92x70 mm
Weight without T2 cameras	3200g		1600g
Weight with T2 cameras	4120g		2060g
Ports	2x USB3.0 HDMI out 720p 60Hz RJ45 Gigabit Ethernet Full Duplex 1000BASE-T DC Power Connector		
Storage	256GB SSD AES256 Encrypted (product code T2-DS8-21)		256GB SSD AES256 Encrypted
	512GB SSD AES256 Encrypted (product code T2-DS8-22)		
Power supply	External power supply with an AC power cable. Range 10V - 20V		
Power consumption idle	14W		14W
Power consumption max	165W		95W
Operating conditions	0 - 40 °C Humidity 20 - 80% RH		
Network	RJ45 Gigabit ethernet fixed or dynamic IP.		
Network encryption	AES256		