



Military guns catalogue®

Zastava arms

Serbia

www.zastava-arms.rs

Long tradition

Zastava oruzje is the cradle of Serbian industry. In 1851 a decision was made to move the Gun Foundry from Belgrade to Kragujevac and in 1853 first cannon barrels were cast. This ended the efforts of the Principality of Serbia to have its own production of arms and equipment. Gun Foundry in Kragujevac, the center of the Principality of Serbia, quickly developed in material and spiritual way. The Gun Foundry had first steam engines, first electric light, first technical school, first quality system and at the World Fair in Paris, in 1889, the Gun Foundry won several medals.

Before the Second World War, the factory was a real industrial giant, with almost twelve thousand employees and ten thousand machines.

After the war, Zastava oruzje continued production and today it produces modern arms and military equipment.

Years of experience in the field of development of products, technology and capacities created conditions for the transfer of technology to other countries.

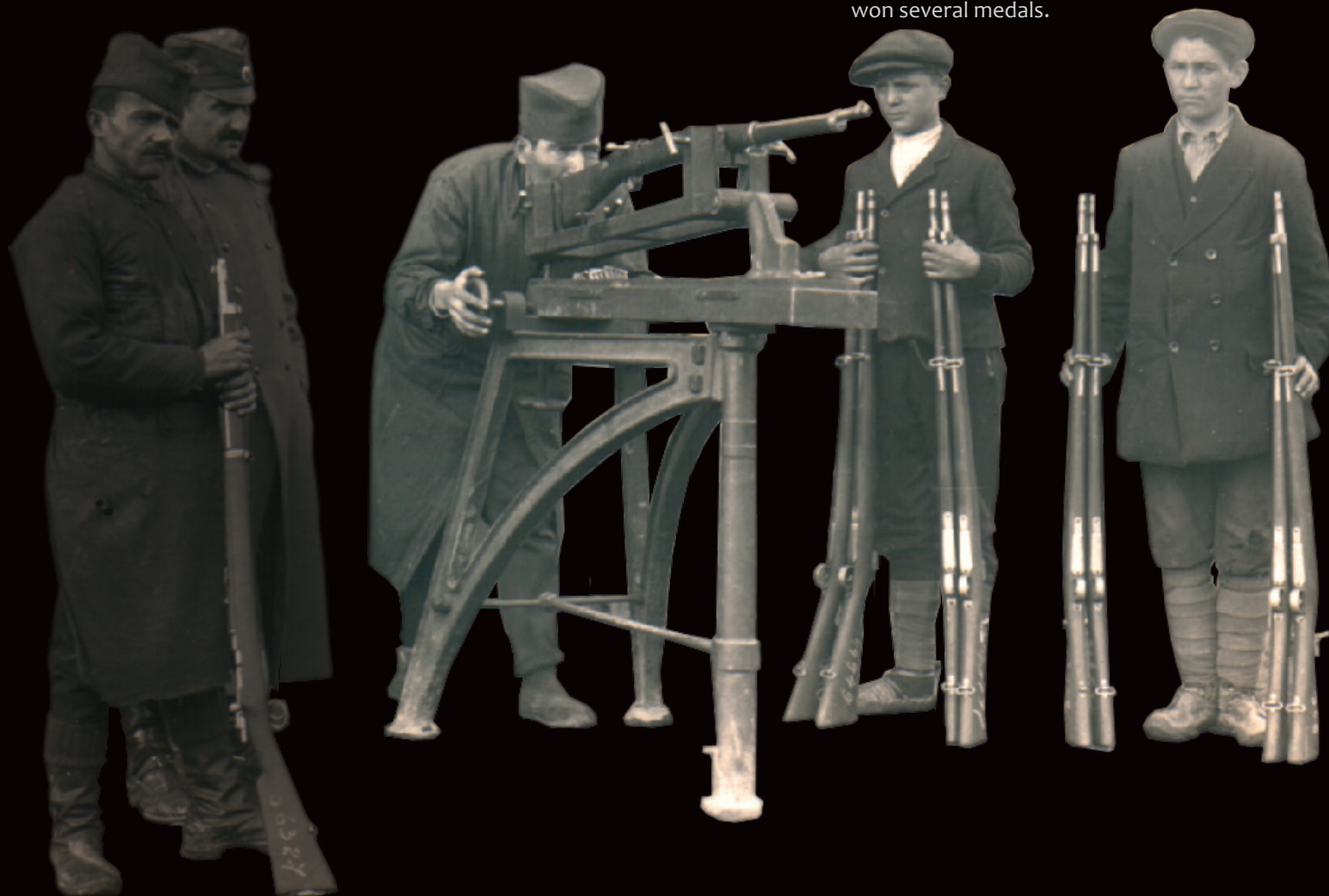
As we use CATIA software to design our products, we can quickly respond to the demands of the market.

Strategic decision of Zastava oruzje is a good position of our products in global world market and cooperation with arms manufacturers in the world.

By applying Quality Management System (QMS) Zastava arms constantly endeavors to improve the quality of products and all processes. QMS (SRPS ISO 9001:2015 and SORS 9000/14) is valid until 2022. Permanent investment in education of staff and purchase of state-of-the-art computer equipment and technology results in placement of new products that follow trends in the world market.

With systematic, skilled and creative work, based on tradition of 165 years, Zastava oruzje tends to keep the trust of the users of products and services.

Content of the buyers is the measure of success of Zastava oruzje.





military guns catalogue

Zastava arms
Kragujevac
Serbia
www.zastava-arms.rs

PUBLISHED
Zastava oružje AD
Kragujevac, Serbia

CONTRIBUTING WRITERS
Snežana Arsenijević
Danko Cvetić
Kristina Jovanović

DESIGN
Miloš Popović

index

Modular Combat System
MCS M 19
cal. 6.5 x 39 mm & 7.62 x 39 mm

4 - 7

Group M21
cal 5.56 x 45 mm

8 - 11

Group Mo5
cal 7.62 x 39 mm / 7.62 x 51 mm

12 - 21

Sniper rifles
Semiauto sniper rifles **SRX 20**
cal 7.62 x 54R mm
Semiauto sniper rifles **M91**
cal 7.62 x 54R mm / 7.62 x 51 mm

22 - 27

Sniper rifles
Mo7 AF/AS
cal 7.62 x 54R mm / 7.62 x 51 mm /
.338 Lapua

28 - 29

Long range rifle
M12 black spear
M93 black arrow

30 - 33

Machine guns
M84, M86,
M87, Mo2 coyote, Mo7

34 - 44

Automatic grenade
launcher
AGL M93 30mm

45 - 46

Underbarrel grenade
launchers
GL M11 40x46mm **BGP** 40mm

48 - 49

Pistols
CZ 999, EZ 9,
EZ 9 compact

50 - 51

Modular Combat System MCS M19[®]

6.5 x 39 / 7.62 x 39 mm

Following the trends in tactical requirements for the use of automatic rifles, Zastava oruzje has developed a new MCS model. Compared to other manufacturers, Zastava oruzje went a step further by offering a rifle that, in addition to easy barrel replacement and the ability to use barrels of different lengths, also allows for caliber change and the choice between a conventional 7.62x39 mm and a new 6.5 mm caliber. The reason for the introduction of the new caliber is that the 6.5 mm cartridge has a number of ballistic advantages over 7.62x39 mm that allow for significantly bigger range, as well as better efficiency and penetrating power at all distances, while maintaining all vital parts of the rifle and with just replacing the barrel and magazine to change to a different caliber.

Main characteristics:

- ▷ semiautomatic and automatic mode
- ▷ caliber change is done by quick and easy replacement of the barrel, without using tools
- ▷ within a single caliber, there are CQC and standard barrel lengths, allowing the rifle to quickly adapt to a variety of combat situations, so that basically the same weapon can be used as a submachine gun, automatic rifle, light machine gun or DMR.
- ▷ full-length Picatinny rail

- ▷ centrally mounted charging handle, allowing easy handling for both right-handed and left-handed shooters
- ▷ charging handle is non-reciprocating type
- ▷ fire selector is ambidextrous, positioned above the handgrip and easily accessible without releasing the grip in combat
- ▷ telescopic Stock with adjustable cheek pad is foldable
- ▷ handguard has Picatinny rails at 12 and 6 o'clock, and lateral K-holes that allow the assembly of a wide variety of optoelectronic equipment.
- ▷ by removing the handguard, the supporting devices can also be mounted on the cylinder carrier, which also has K-holes, thus establishing a firm and stable connection with the rifle.
- ▷ gas flow regulator
- ▷ flash hider is also a muzzle brake, and the standard thread on the muzzle also allows the assembly of other muzzle devices
- ▷ the rifle's ergonomics are remarkable because, in addition to ambidextrous commands (charging handle, magazine release, fire selector), the shape of the stock and weight distribution ensure a balanced system without major recoil.







Modular combat system (MCS) M19 in calibers 6.5x39 mm and 7.62x39 mm is a gas operated weapon. Main feature of this rifle is easy change of caliber, done by simply replacing the barrel, without disassembling the rifle. Barrels with different lengths, within one caliber, are also available and in that way rifle can be adjusted to different combat situations.



Model	C	MC	W	WM	BL	TL	TF	O	LS
Modular Combat System M19	7.62 x 39	30	3.40 / 3.85	0.25	254 / 415	790 / 910	Semi&Auto	Gas	Rotating bolt
	6.5 x 39	25							

C- Calibre (mm), MC- Magazine capacity, W- Weight of weapon (kg), WM- Weight of magazine (kg), BL- Barrel length (mm), TL-Total length Weapon(mm), TF- Type of fire, O- Operation, LS- Locking system

Group M21[®]

caliber 5.56 x 45mm

Submachine gun M21 BS

Assault rifle M21 S BS

Assault rifle M21 A BS



Battlefield complexity demands weapons of great firing ability, functioning in all environments. The solution is group M21 BS calibre 5.56 mm, as new generation of assault rifle M21A, adopted in the Army of the Republic of Serbia. The weapons belonging to the group are designed on the basis of famous, highly reliable Kalashnikov system.

Main Characteristics

- excellently balanced weapon with low recoil ensures easy fire control
- hammer forged barrel with chromium plated interior ensuring excellent precision and long service life
- mechanical and applied safety
- ambidextrous fire selector
- iron sights with tritium tubes ensure aiming in night conditions
- muzzle brake disperses flash at the same time
- two-piece polymer handguards with good thermal isolation ensure comfort grip
- full length Picatinny rail on the receiver cover
- 12 o'clock and 6 o'clock picatinny rails on the handguards
- polymer stock with easy and reliable mechanism for right side folding
- magazine made of high-quality sheet metal



Submachine gun M21 BS



Assault Rifle M21 ABS



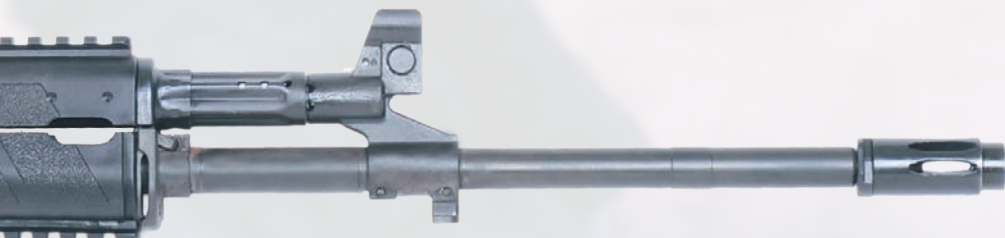
Assault Rifle M21 SBS



Assault rifle M21

Assault Rifles

Accuracy and precision of a sniper rifle.
Quick and simple assembly of underbarrel
grenade launcher (see Optional)



- Picatinny rail on the receiver cover enables the assembly of optical sight
- two additional Picatinny rails at 12 o'clock and 6 o'clock on handguards enable the assembly of optical-electronic equipment



Optional

On customer's request, the following can be included in the set:

- underbarrel grenade launcher bgp 40 mm
- telescopic stock can be assembled to rifle, instead of standard folding stock.
- foregrip used for easier handling of the gun can be included in the set of all bs guns



Model	C	MC	W	WM	TL	BL	TF	O	LS	RF
Submachine Gun M21 BS	5.56 x 45	30	4.00	0.35	825 / 575	290	Semi&Auto	Gas	Rotating bolt	600 ± 50
Assault Rifle M21 SBS	5.56 x 45	30	4.2	0.35	915 / 666	375	Semi&Auto	Gas	Rotating bolt	600 ± 50
Assault Rifle M21 ABS	5.56 x 45	30	4.30	0.35	1000 / 750	460	Semi&Auto	Gas	Rotating bolt	600 ± 50

C- Calibre (mm), MC- Magazine capacity, W- Weight of weapon with metal magazine (kg), WM- Weight of metal magazine (kg), TL- Total length Weapon/Weapon with folded stock (mm), BL- Barrel length (mm), TF- Type of fire, O- Operation, LS- Locking system, RF- Rate of fire (rds/min)

Group Mo5

cal. 7.62 x 39 mm

Assault rifle Mo5 E1
Assault rifle Mo5 E2
Assault rifle Mo5 E3
Submachine gun Mo5 C1
Light machine gun Mo5 G1

Group Mo5E consists of new models of assault rifles in caliber 7.62x39 mm. All excellent characteristics of well known assault rifles M70 are kept in this model and many upgraded characteristics are result of modern tactic demands.

Common characteristics for all Mo5E models:

- Kalashnikov system ensures perfect function in all climate and terrain conditions
- the best raw materials contribute to extreme durability
- hammer forged barrel ensures excellent precision
- mechanical and applied safety
- automatic and semiautomatic mode
- 30 rds polymer magazine



cal. 7.62 x 51 mm

Assault rifle Mo5N1
Assault rifle Mo5N2

- excellently balanced weapon with low recoil ensures easy fire control
- muzzle brake disperses flash at the same time
- iron sights with tritium tubes ensure aiming in night conditions
- two-piece polymer handguards with good thermal isolation ensure comfort grip
- 12 o'clock and 6 o'clock Picatinny rails on the handguards
- polymer stock with easy and reliable mechanism for right side folding





Assault rifles series M05E

Assault rifle M05E1



Model	C	MC	W	WM	TL	BL	TF	O	LS	RF
Assault Rifle M05 E1	7,62 x 39	30	4.05	0.24	934 / 689	415	Semi&Auto	Gas	Rotating bolt	620 ± 60
Assault Rifle M05 E2	7,62 x 39	30	4.15	0.24	934 / 689	415	Semi&Auto	Gas	Rotating bolt	620 ± 60
Assault Rifle M05 E3	7,62 x 39	30	4.25	0.24	934 / 689	415	Semi&Auto	Gas	Rotating bolt	620 ± 60

C- Calibre (mm), MC- Magazine capacity, W- Weight of weapon with metal magazine (kg), WM- Weight of polymer magazine (kg), TL- Total length Weapon/Weapon with folded stock (mm), BL- Barrel length (mm), TF- Type of fire, O- Operation, LS- Locking system, RF- Rate of fire (rds/min)



Differences between M05E models

M05E1 is the basic model without possibility to attach optical sight mount to the receiver.

M05E2 has dovetail rail on the left side of the receiver to attach mount with Picatinny rail. Mount with Picatinny rail can be included in the set of the rifle on customer's request.



Assault rifle M05E2



Assault rifle M05E3





Differences between M05E models
M05E3 has full length Picatinny rail on
the receiver cover.



Options
Underbarrel grenade launcher BGP
40mm or BGP 40x46 mm

Submachine gun M05C1

Submachine gun M05 C1 is upgraded version of well known M92 submachine gun, in accordance with modern tactic demands.

Submachine gun M05C1



Characteristics for M05C1:

- ⌋ compact design
- ⌋ excellently balanced weapon with low recoil ensures easy fire control
- ⌋ Kalashnikov system ensures perfect function in all climate and terrain conditions
- ⌋ the best raw materials contribute to extreme durability
- ⌋ hammer forged barrel ensures excellent precision
- ⌋ automatic and semiautomatic mode
- ⌋ 30 rds polymer magazine
- ⌋ flash hider masks the position of the shooter
- ⌋ iron sights with tritium tubes ensure aiming in night conditions
- ⌋ two-piece polymer handguards with good thermal isolation ensure comfort grip
- ⌋ full length Picatinny rail on the receiver cover
- ⌋ 12 o'clock and 6 o'clock Picatinny rails on the handguards
- ⌋ polymer stock with easy and reliable mechanism for right side folding

Light machinegun Mo5G1

Light machinegun Mo5G1



Based on proved and well known Light machine gun M72

- cold forged barrel ensures long service life and exceptional precision
- fluted barrel for quick cooling, ensures precision of the weapon even in heavy duty
- mild recoil is result of good ergonomic solutions and excellent balance
- improved mobility by folding stock made of polymer reinforced by fiberglass

- built-in bipod, which can be folded, facilitates aiming and firing during burst fire
- iron sights with tritium tubes provide the possibility of aiming in conditions of low visibility
- fed from a polymer magazine with the capacity of 30 rounds, which is the same for all automatic weapons in cal. 7.62 x 39 mm produced by Zastava oruzje



Model	C	MC	W	WM	TL	BL	TF	O	LS	RF
Assault Rifle Mo5 C1	7,62 x 39	30	3.95	0.24	810 / 565	254	Semi&Auto	Gas	Rotating bolt	620 ± 60
Assault Rifle Mo5 G1	7,62 x 39	30	5.30	0.24	1043/ 797	542	Semi&Auto	Gas	Rotating bolt	620 ± 60

C- Calibre (mm), MC- Magazine capacity, W- Weight of weapon with metal magazine (kg), WM- Weight of polymer magazine (kg), TL- Total length Weapon/Weapon with folded stock (mm), BL- Barrel length (mm), TF- Type of fire, O- Operation, LS- Locking system, RF- Rate of fire (rds/min)

Assault rifles series Mo5N cal. 7.62x51 mm

Assault rifle Mo5N1

Assault rifle Mo5N2



*S in model name indicates the version with shorter barrel

*F in model name indicates the version with fixed stock

Group Mo5N consists of new models of assault rifles in caliber 7.62x51 mm. All excellent characteristics of previous version M77 are kept in this model and many upgraded characteristics are the result of modern tactic demands.

Common characteristics for all Mo5 N models:

- hammer forged barrel ensures excellent precision
- chromium plated barrel interior
- gas flow regulator
- mechanical and applied safety
- automatic and semiautomatic mode
- 20 rds metal sheet magazine
- flash hider

- iron sights with tritium tubes ensure aiming at night
- full length Picatinny rail on the receiver cover
- two-piece polymer handguards with good thermal isolation ensure comfortable grip
- 12 o'clock and 6 o'clock Picatinny rails on the handguards
- polymer stock with easy and reliable mechanism for right side folding

Assault rifle Mo5N2FS



Assault rifle Mo5N1FS



Assault rifle Mo5N2



DIFFERENCES BETWEEN Mo5 N MODELS

- Mo5 N1 is basic model with fire selector on the right side of the receiver
- Mo5 N2 is equipped with ambidextrous fire selector

Model	C	MC	W	WM	TL	BL	TF	O	LS	RF
Assault Rifle Mo5N1 & Mo5N2	7.62x 51	20	4.45	0.25	1049/804	500	Semi&Auto	Gas	Rotating bolt	620 ± 60
Assault Rifle Mo5N1S & Mo5N2S			4.35		955/710	406				

C- Calibre (mm), MC- Magazine capacity, W- Weight of weapon with metal magazine (kg), WM- Weight of polymer/metal magazine (kg), TL- Total length Weapon/Weapon with folded stock (mm), BL- Barrel length (mm), TF- Type of fire, O- Operation, LS- Locking system, RF- Rate of fire (rds/min)

Sniper rifles

Semiauto Sniper rifles:

Sniper rifle SRX 20

cal. 7.62 x 54R mm

Sniper rifle M91

cal 7.62 x 54R mm / 7.62 x 51 mm

Primary demand for this kind of product - high accuracy at large distances - is fulfilled and confirmed in hardest exploiting conditions.

The best results are obtained at ranges up to 800m.

This group was designed after long and careful study of combat tactics and experience of military and police special forces world wide.

Bolt Action Sniper rifles:

Sniper rifle Mo7 AS

Sniper rifle Mo7 AF

cal 7.62 x 54R mm / 7.62 x 51 mm / .338 Lapua

Main Characteristics

- ergonomically designed with perfect balance
- easily controlled
- easy handling and maintenance
- possibility of mounting of different types of optical devices
- possibility to install a silencer
- possibility of adjusting to different types of fields for easier aiming



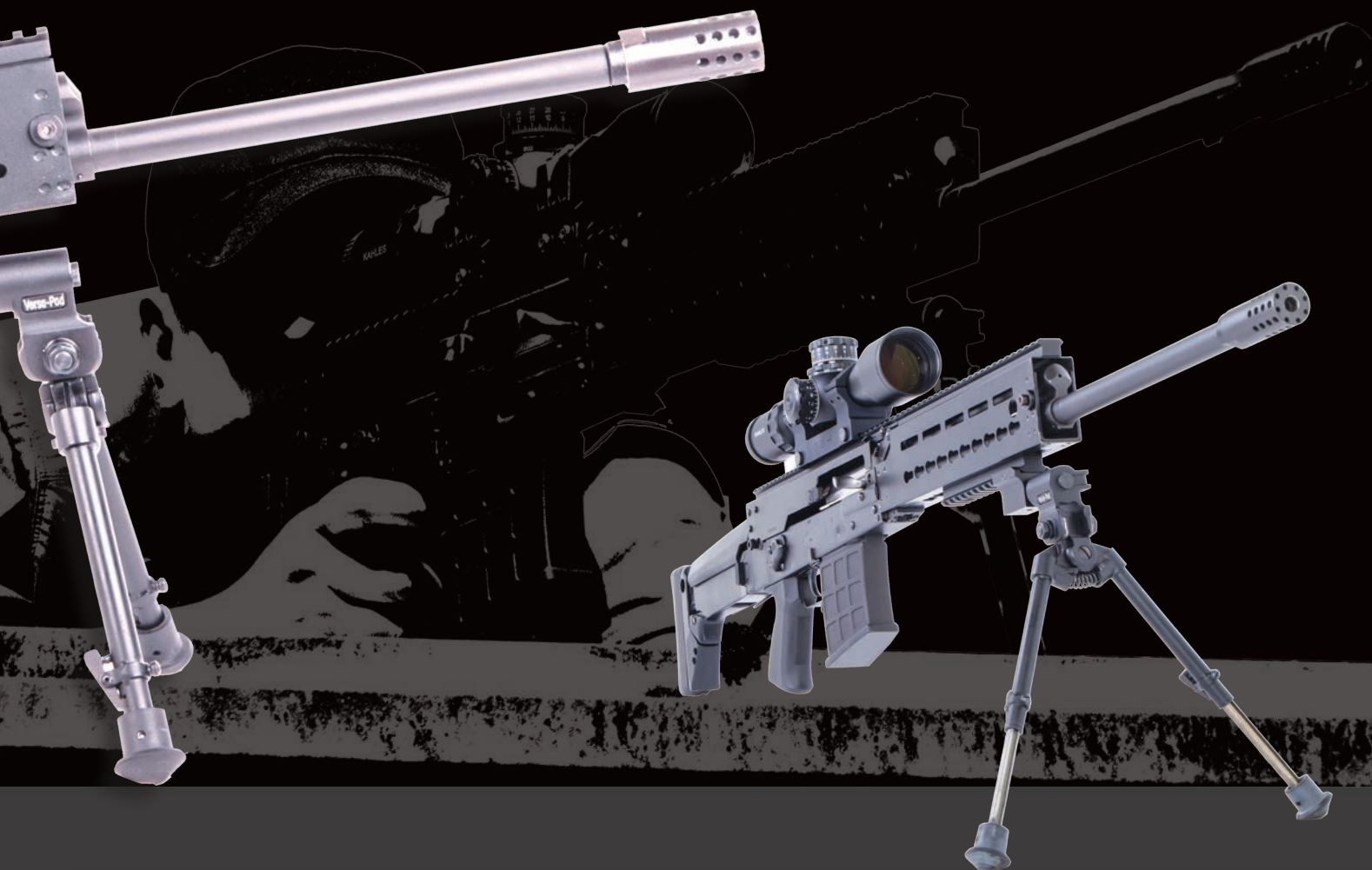


Sniper rifle SRX20[®]

7.62x54R



Model SRX20 is the upgraded version of the well-known and proven M91 sniper rifle that is designed on the basis of Kalashnikov system.



Main characteristics:

- semi-automatic sniper rifle
- gas operated weapon
- locking is achieved with rotating bolt
- cold forged barrel with chrome plated bore provides exceptional precision
- robust design provides excellent function and performance on all terrains and in all weather conditions
- tactical handguards with Picatinny rails and different types of lock holes enable the assembly of a wide range of accessories
- long Picatinny rail on the receiver cover and handguard
- muzzle brake with multiple gas dispersing holes over 360° pattern reduces the recoil and muzzle flash
- gas regulator
- built-in deflector that directs ejected cartridge cases
- telescopic folding stock with adjustable cheek pad
- bipod
- optical sight included in the rifle set

Model	C	MC	W	WM	TL	BL	TF	O	LS	MER
Sniper rifle SRX20	7.62x 54R	10	5.4	0.17	1145/900	560	Semiauto	Gas	Rotating bolt	1000

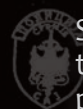
C- Calibre (mm), MC- Magazine capacity, W- Weight of weapon (kg), WM- Weight of magazine (kg), TL-Total length Weapon/Weapon with folded stock (mm), BL- Barrel length (mm), TF- Type of fire, O- Operation, LS- Locking system; MER- Maximum effective range (m)

Sniper rifle M91[®]

7.62x54R 7.62x51



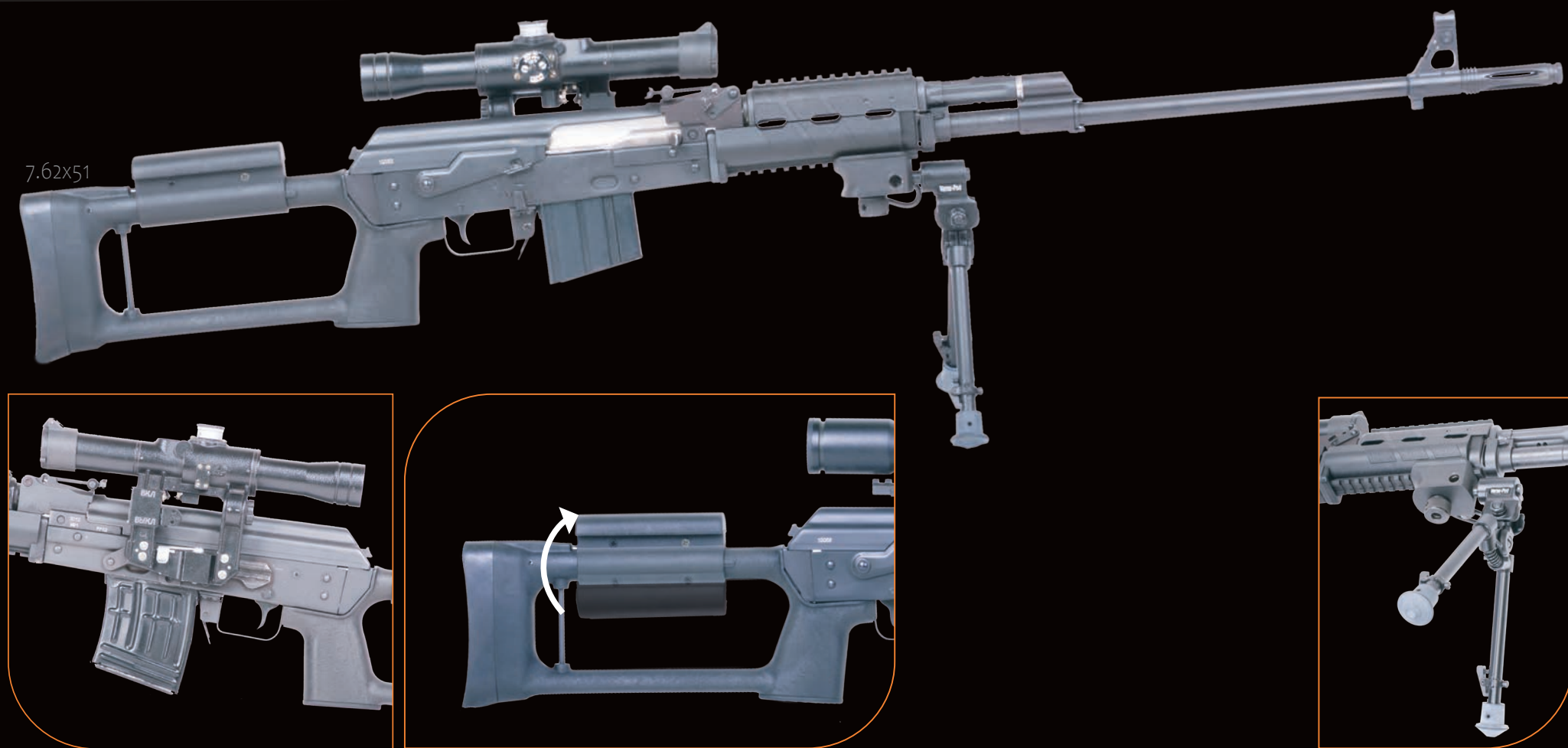
7.62x54R



Semi-Automatic Sniper Rifle M91 is designed on the bases of well-known Kalashnikov system provided with possibility of propellant gas flow regulation.

Primary demand for this kind of product - high accuracy at large distances - is fulfilled and confirmed in hardest exploiting conditions. The best results are obtained at ranges up to 800m. The possibility of aiming with iron sight is 1000m.

Optical sight, included in the standard set of the weapon, additionally contributes to extraordinary accuracy and precision of the rifle. Bipod can be included in the rifle set on customer's request



Model	C	MC	W	WM	TL	BL	TF	O	LS	MER
Sniper Rifle M91	7.62 x 54 R 7.62 x 51	10	5.49	0.2	1200	620	Semi	Gas	Rotating bolt	1000

C- Calibre (mm), MC- Magazine capacity, W- Weight of weapon (M91 with optical sight)(kg), WM- Weight of magazine (kg), TL- Total length (mm), BL- Barrel length (mm), TF- Type of fire, O- Operation, LS- Locking system, MER- Maximum effective range (m)

Sniper rifle Mo7

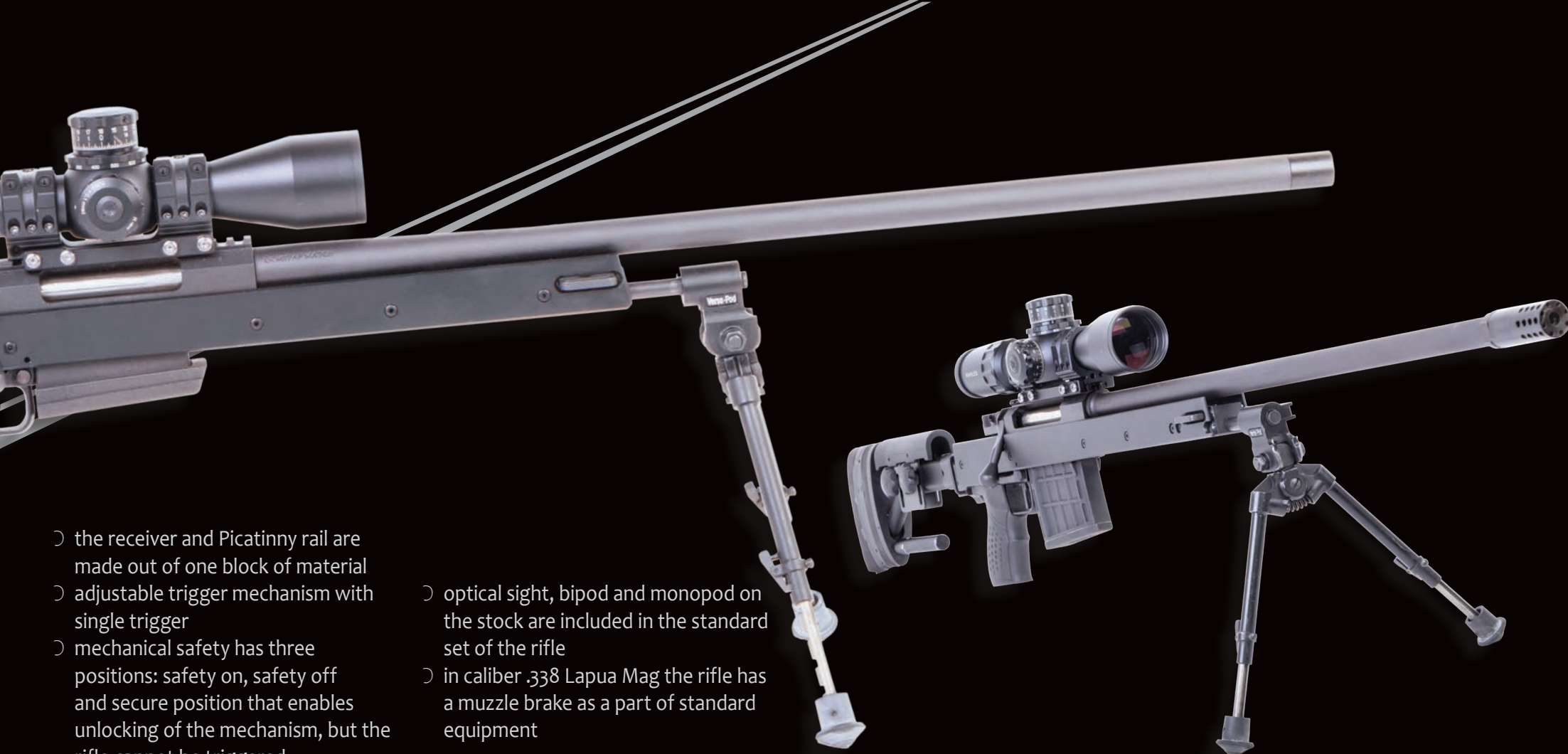


Sniper rifle Mo7 AF

- ▷ bolt action rifle, based on Mauser m98 mechanism
- ▷ cold forged heavy barrel guarantees exceptionally high reliability and precision
- ▷ fully adjustable folding stock

Model	C	MC	W	WOB	WM	TL	BL	TF	O	LS	MER
Sniper Rifle Mo7 AF	7.62 x 54 R	5	5.40	6.91	0.12	1182/930	650	Single	Bolt action	Rotating bolt	1000
Sniper Rifle Mo7 AS	7.62 x 51		5.25	6.76		1182					
Sniper Rifle Mo7 AF	338 Lapua	5	5.60	7.10	0.12	1227/975	690	Single	Bolt action	Rotating bolt	1300

C- Calibre (mm), MC- Magazine capacity, W- Weight of rifle with empty magazine (kg), WOB- Weight of rifle with empty mag. optical sight and bipod (kg), WM- Weight of magazine (kg), TL- Total length (mm), BL- Barrel length (mm), TF- Type of fire, O- Operation, LS- Locking system, MER- Maximum effective range (m)



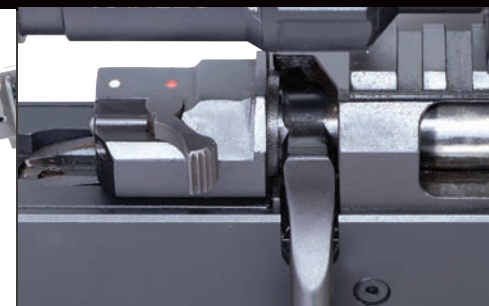
- the receiver and Picatinny rail are made out of one block of material
- adjustable trigger mechanism with single trigger
- mechanical safety has three positions: safety on, safety off and secure position that enables unlocking of the mechanism, but the rifle cannot be triggered
- thread on the muzzle enables the assembly of masking devices and it is protected with a ring

- optical sight, bipod and monopod on the stock are included in the standard set of the rifle
- in caliber .338 Lapua Mag the rifle has a muzzle brake as a part of standard equipment

Optional

- long Picatinny rail on the receiver and over the barrel

Sniper rifle M07 AS



Long range rifle[®]

M12 Black Spear

Long Range Rifle M12 cal. .50Browning

Long Range Rifle M12 cal. 12.7x108

A long range rifle, made on the basis of Mauser system, which was, during its one hundred years long combat history, proven to be the most accurate and most reliable bolt-action system.



Starting from the well-known model M93 Black Arrow, new models of long-range rifles M12 and M12M were developed.







Looooooooooooong Range Rifle

A long range anti-materiel rifle is a bolt action weapon capable of destroying various targets at large distances and in different climate and terrain conditions.

Main Characteristics

- locking - Mauser system
- bolt guided along the whole length of its movement in the receiver
- heavy barrel ensures accurate and precise path of fired projectile of large energetic potential
- chromium plated barrel interior
- adjustable trigger pull
- Picatinny rail is made together with the receiver from one block of steel

- muzzle brake reduces the recoil and facilitates shooting
- adjustable aluminium stock has built-in buffer, which significantly reduces the effect of recoil
- butt spike, adjustable in height
- adjustable folding bipod
- standard catch for the bipod assembly enables the assembly of other types of bipods, of user's choice

A set of spares, tools and accessories belongs to each weapon.



M12 Black Spear

Long Range Rifle M12M

- three-chamber muzzle brake reduces the recoil and facilitates shooting
- adjustable trigger-pull

- long Picatinny rail on the receiver and handguard
- handguard with Picatinny rails at 12 and 6 o'clock and different types of holes for the assembly of accessories

- adjustable folding stock has buffers that significantly reduce the impact of the weapon recoil

Model	C	MC	W	WM	TL	BL	TF	O	LS	MER
Long Range Rifle M12	12.7 x 108 / .50 Browning	5	13.46 / 12.95	0.78	1700 / 1533	1007 / 840	Single	Bolt action	Rotating bolt	1800/1600
Long Range Rifle M12M	12.7 x 108 / .50 Browning	5	13.00 / 12.95	0.36	1600 / 1580	860 / 840	Single	Bolt action	Rotating bolt	1600

C - Calibre (mm), **MC** - Magazine capacity, **W** - Weight of weapon (without optical sight)(kg), **WM** - Weight of magazine (kg), **TL** - Total length (mm), **BL** - Barrel length (mm), **TF** - Type of fire, **O** - Operation, **LS** - Locking system, **MER** - Maximum effective range (m)

Machine guns[Ⓜ]

M84
M86

M87
M87 NAVAL
Mo2 Coyote
Mo7

Each experienced infantryman knows that sustained machine gun fire is his best friend when coming from his own side, and his worst enemy when coming from the other. These machine guns are capable of delivering long range accurate fire in all weather and ground conditions, day and night. They also have a credit of a key weapon in many combats, capable of solving almost impossible tactical situations.



Main Characteristics

- all metal parts made of high tensile steel
- hammer forged barrel
- chromium plated barrel interior
- machining of functional parts done on state-of-the-art CNC machinery
- all parts and subassemblies thoroughly controlled prior to final assembly
- after assembly, each machine gun tested and approved
- belt-fed, belts placed in appropriate ammo boxes
- gas flow regulator to cope with extreme weather and terrain conditions
- for cooling purposes and for longer service life of the weapon, the barrel can be detached or replaced in the matter of seconds
- front and rear iron sights (except MG M86)





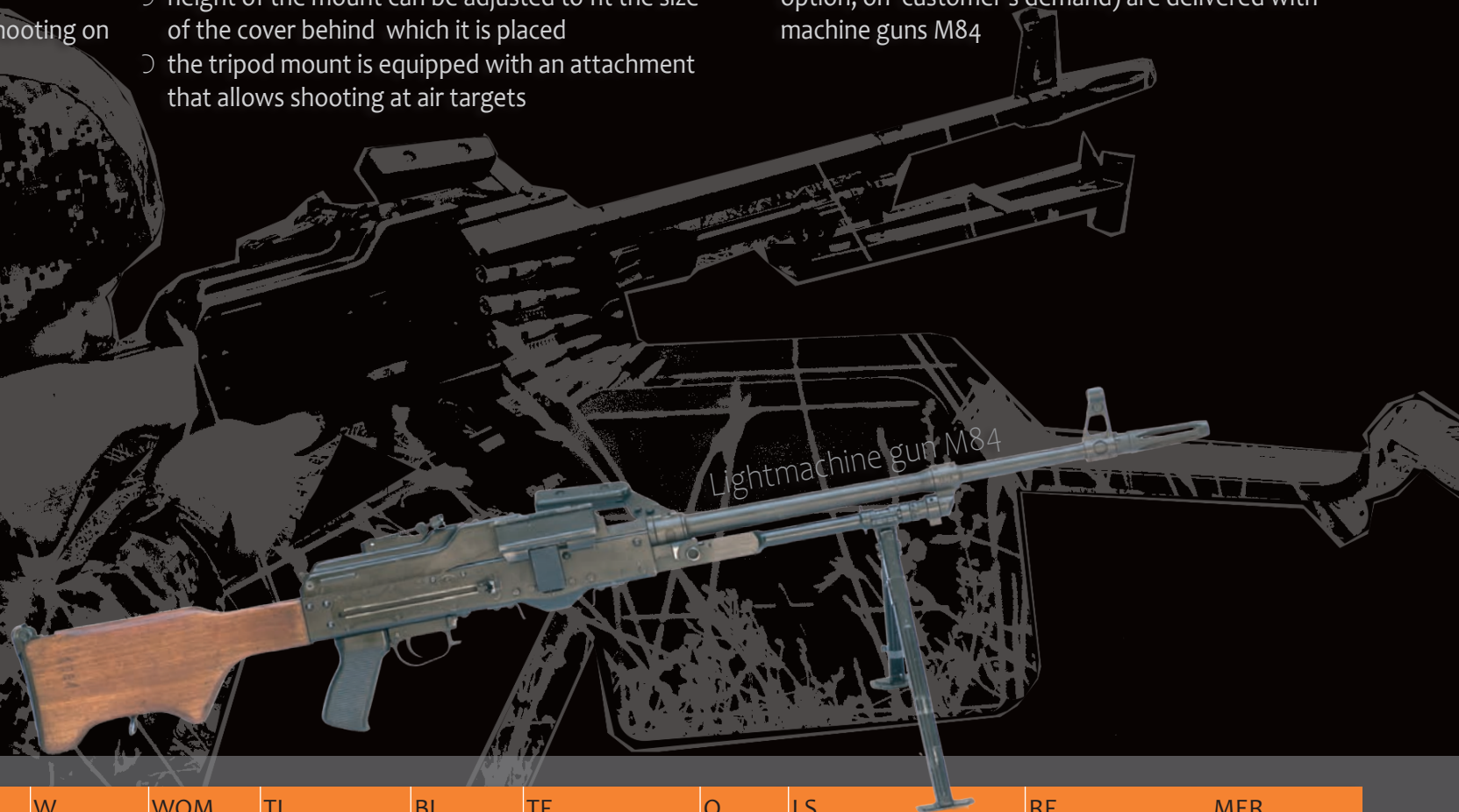
Machine gun M84

Intended for the realization of infantry units demands.

- can be delivered with or without tripod
- can be used on a folding bipod enabling shooting on different terrains

- stable tripod mount and mild recoil of the gun provide very accurate fire
- height of the mount can be adjusted to fit the size of the cover behind which it is placed
- the tripod mount is equipped with an attachment that allows shooting at air targets

- spares and Accessories, two types of ammunition boxes (250/100 rds) and belt loading machine (as an option, on customer's demand) are delivered with machine guns M84



Model	C	W	WOM	TL	BL	TF	O	LS	RF	MER
Light Machine Gun M84	7.62 x 54 R	8.8	-	1190	603	Automatic	Gas	Rotating Bolt	700-800	1000
Machine Gun M84	7.62 x 54 R	13.3	4.5	1190	603	Automatic	Gas	Rotating Bolt	700-800	1000
Light Machine Gun M84M	7.62 x 54 R	8.8	-	1243/908	603	Automatic	Gas	Rotating Bolt	700-800	1000

C- Calibre (mm), **W-** Weight of weapon (kg), **WOM-** Weight of mount (kg), **TL-**Total length Weapon/Weapon with folded stock (mm), **BL-** Barrel length (mm), **TF-** Type of fire, **O-** Operation, **LS-** Locking system, **RF-** Rate of fire (rds/min), **MER-** Maximum effective range (m)



Lightmachine gun M84M



Machine gun M84



belt loading machine

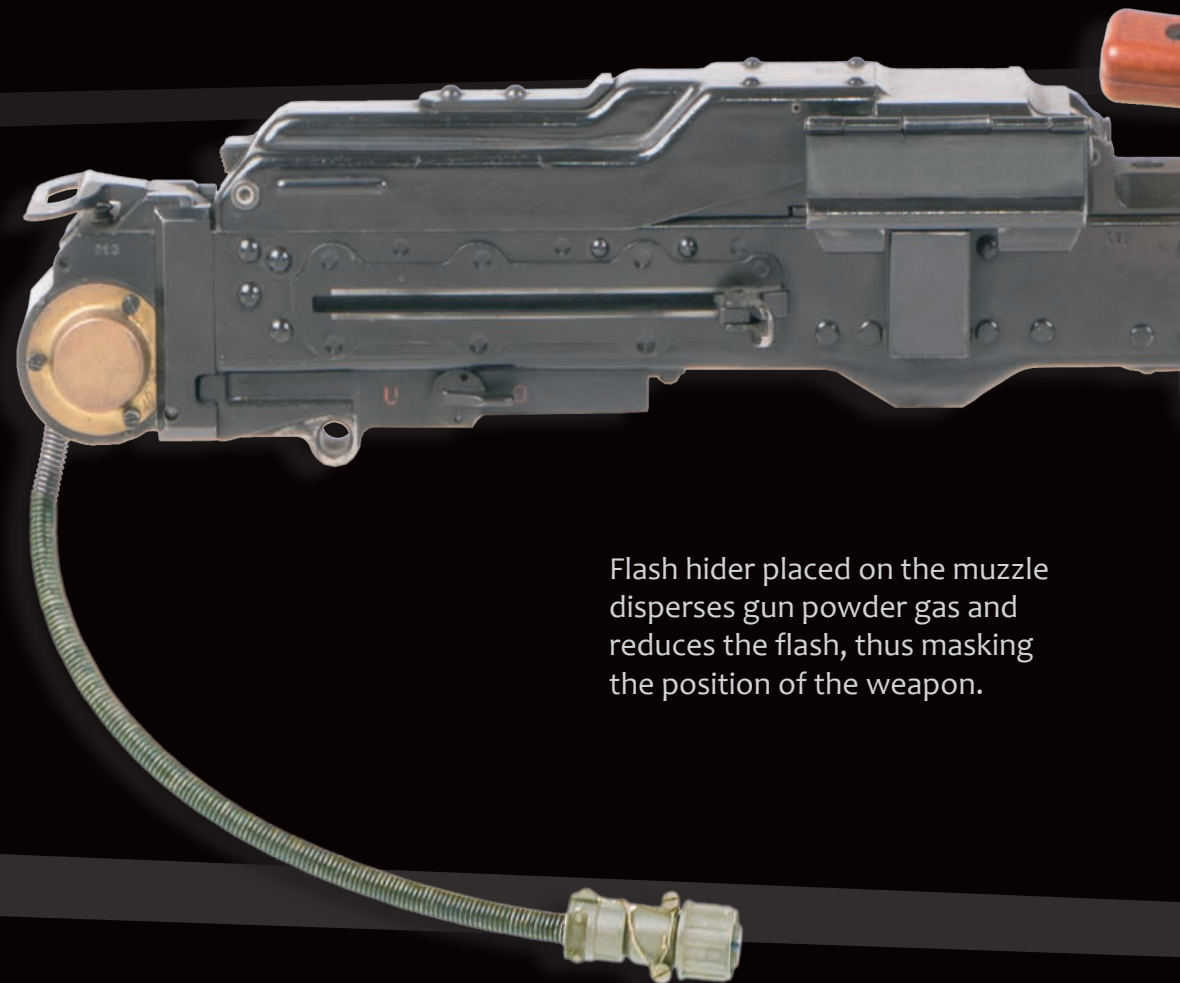


Machine gun M86

Machine gun M86 is intended for mounting on tanks and combat vehicles, as a gun fixed to the turret. Firing without direct contact with machine gun is achieved through electric trigger. Mechanical triggering is enabled through the lever on electric trigger.

It is a gas operated weapon, with rotating bolt as locking system.

The barrel is made by cold forging, the interior is chrome plated, which guarantees its long service life and steady ballistic characteristics. In heavy duty, for cooling purposes, the barrel is easily disassembled and replaced with the spare one.



Flash hider placed on the muzzle disperses gun powder gas and reduces the flash, thus masking the position of the weapon.



Model	C	W	TL	BL	TF	O	LS	RF	MER
Machine Gun M86	7.62 x 54 R	11.6	1100	780	Automatic	Gas	Rotating Bolt	700-800	1000

C- Calibre (mm), W- Weight of weapon (kg), TL- Total length (mm), BL- Barrel length (mm), TF- Type of fire, O- Operation, LS- Locking system, RF- Rate of fire (rds/min), MER- Maximum effective range (m)

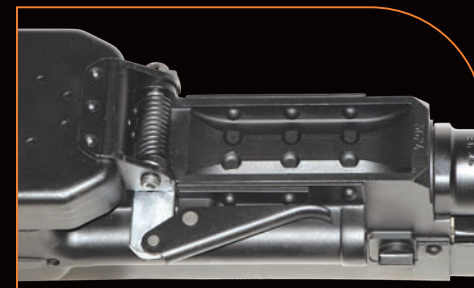
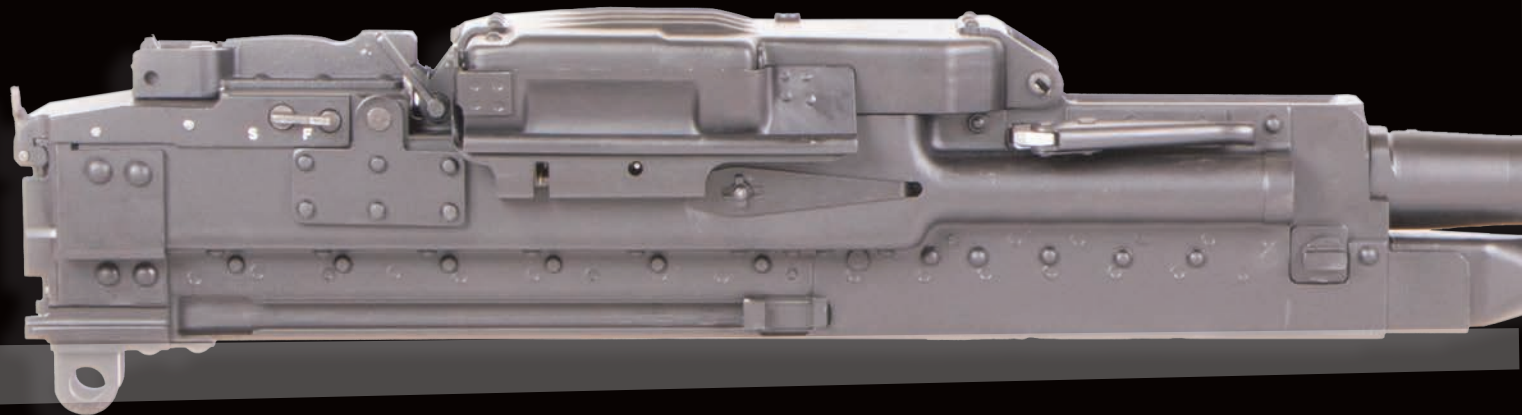
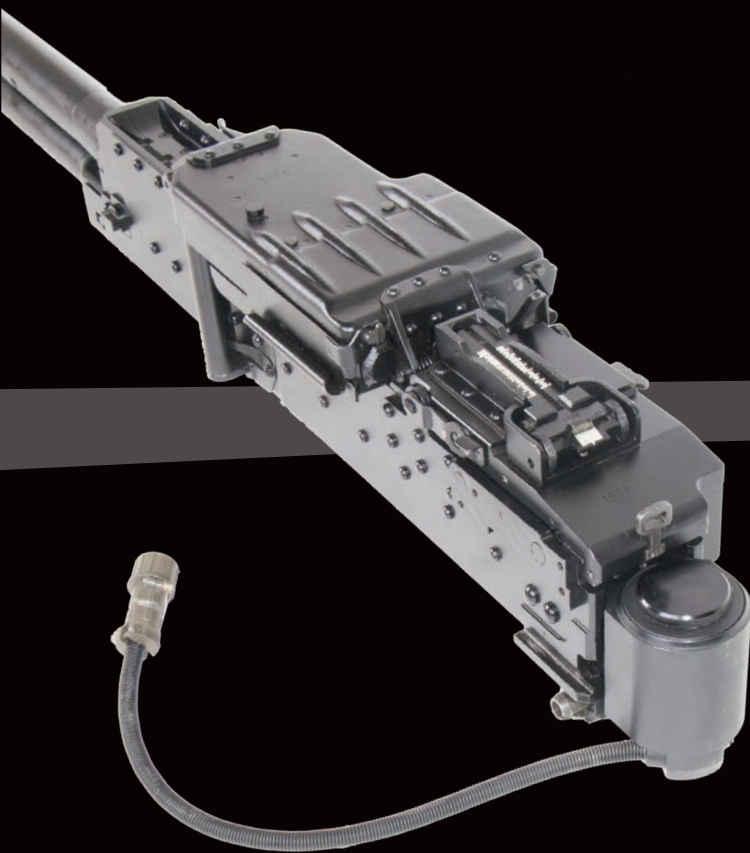


- simple assembly on different combat vehicles
- electro-triggering mechanism with the possibility of mechanical triggering
- gas flow regulator provides reliable functioning in all environments

- not fitted with sights, being directed onto the target by the tank fire control system
- fed from the belt placed in ammunition box, with the capacity of 250 cartridges



Machine gun M87



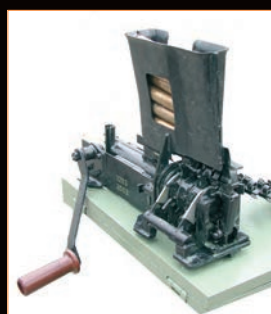
M87 heavy machine gun uses design of the famous NSV, the best heavy machine gun ever designed. This design provides reliable, jam-proof operation in any ground or weather conditions.

- empty cases ejected forward
- spare barrel prolongs the service life of the weapon

- anti-aircraft machine gun on battle tanks and armoured vehicles
- providing efficient anti-aircraft protection for highly mobile, light mountain infantry units, but also providing heavy, long-range accurate fire on ground targets
- providing efficient fire against water-surface and coastal targets

Spares (including spare barrel), accessories, ammunition boxes (60 rds), cartridge belts and belt filler (as an option, on customer's demand) are delivered with each machine gun.

Depending on purpose and the type of combat means on which it is placed, the gun is used with appropriate mount.



belt loading machine

Model	C	W	WOS	TL	BL	TF	O	LS	RF	MER
Machine Gun M87	12.7 x 108 / .50 Browning	24.8	9.3	1560	1100	Automatic	Gas	Open bolt	700	1500

C- Calibre (mm), **W-** Weight of weapon (kg), **WOS-** Weight of spare barrel (kg), **TL-** Total length (mm), **BL-** Barrel length (mm), **TF-** Type of fire, **O-** Operation, **LS-** Locking system, **RF-** Rate of fire (rds/min), **MER-** Maximum effective range (m)

Machine gun Mo2 Coyote



Machine Gun Mo2 Coyote is formed when the Machine Gun M87 is set to the cradle fixed to a tripod. Pistol trigger mechanism and stock with buffer are assembled to the machine gun.

These assemblies provide high mobility of the gun, with excellent control of fire.

Primary purpose of Mo2 Coyote is provision of heavy, long-range accurate fire on ground targets.

- automatic type of fire
- cold forged barrel with chrome plated bore provides long service life with unaltered ballistic characteristics

- reliable functioning, without stoppages, on all terrains and in all weather conditions

- the barrel is disassembled quickly and easily, so that in extreme modes of use, it can be cooled quickly or replaced with the spare one
- the machine gun is fed from the ammunition belt placed in an ammunition box, with the capacity of 60 rounds.
- after firing, cartridge cases are ejected forward, which increases the safety of the shooter and the personnel in the vicinity.



- flash hider on the muzzle disperses gun powder gases and reduces the flash, thus masking the position of the weapon
- trigger mechanism that leans onto the stock with buffers provides precise shooting
- tripod
- belt filler on customers request can be included in set

Model	C	W	WOM	TL	BL	TF	O	LS	RF	MER
Machine Gun M02 Coyote	12.7 x 108 .50 Browning	48.8	24	1970	1100	Automatic	Gas	Open bolt	700	1500

C- Calibre (mm), **W-** Weight of weapon (kg), **WOM-** Weight of mount (kg), **TL-** Total length (mm), **BL-** Barrel length (mm), **TF-** Type of fire, **O-** Operation, **LS-** Locking system, **RF-** Rate of fire (rds/min), **MER-** Maximum effective range (m)

Machine gun Mo7



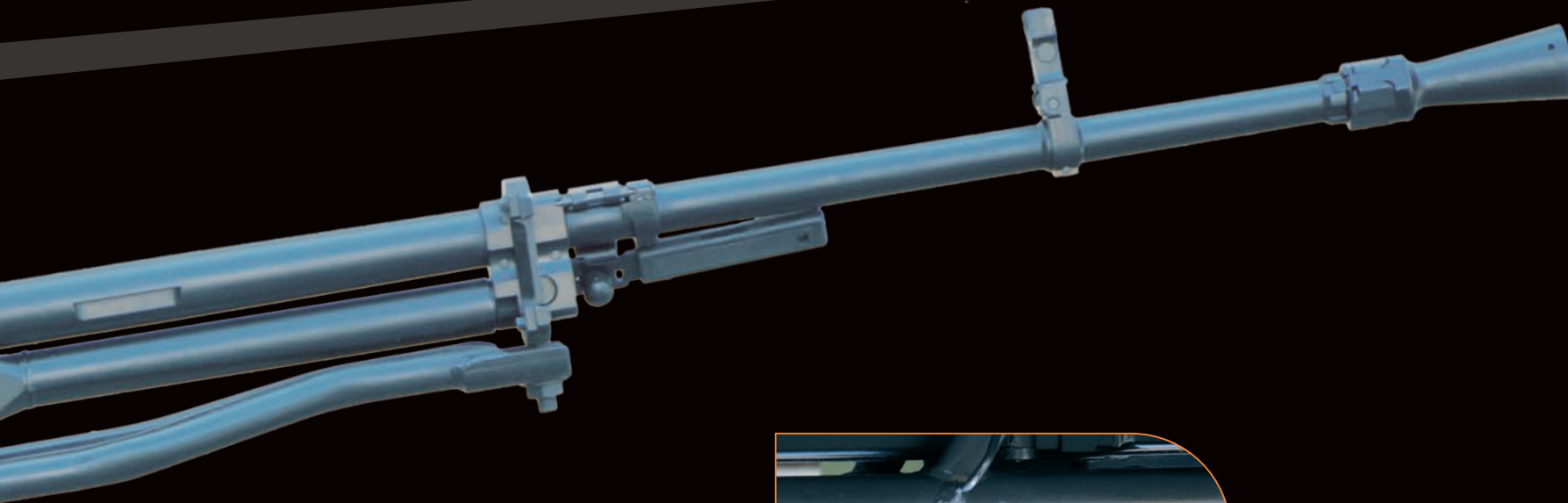
Machine gun Mo7 is a version of machine gun M87 adapted to be mounted on vehicles or other transport means.

It is formed by mounting of machine gun M87 to the cradle, with post. Area covered with fire from transport means can be limited, so as to provide maximum safety of the crew

of the transport means. Spade grip - enables the shooter easy handling of the machine gun, easy cocking and safe triggering.

Belt collector grip - enables collection of ammunition belts at one place after firing, so that they can be used for ammunition again.





Pivot - enables the mounting of machine gun Mo7 to post on transport mean



Model	C	W	WOM	TL	BL	TF	O	LS	RF	MER
Machine Gun Mo7	12.7 x 108 / .50 Browning	43.8	19	1760	1100	Automatic	Gas	Open bolt	700	1500

C- Calibre (mm), W- Weight of weapon (kg), WOM- Weight of mount (kg), TL- Total length (mm), BL- Barrel length (mm), TF- Type of fire, O- Operation, LS- Locking system, RF- Rate of fire (rds/min), MER- Maximum effective range (m)

Automatic grenade launcher M93[®]

M93 30 mm

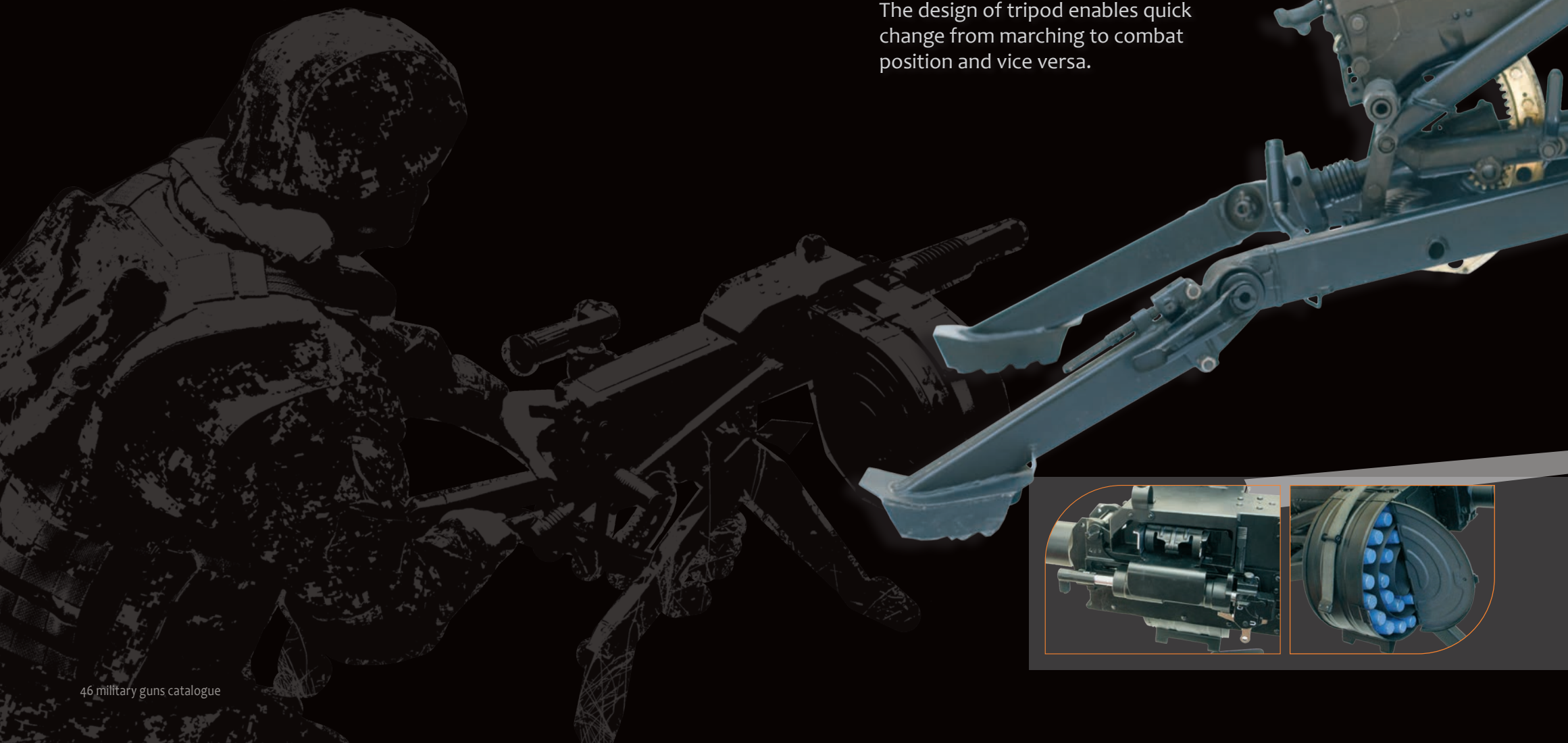
Automatic Grenade Launcher M93 is an infantry weapon intended for destruction of uncovered and covered live force at distances up to 1700 m, as well as for destruction of light armoured vehicles at distances up to 1000 m.

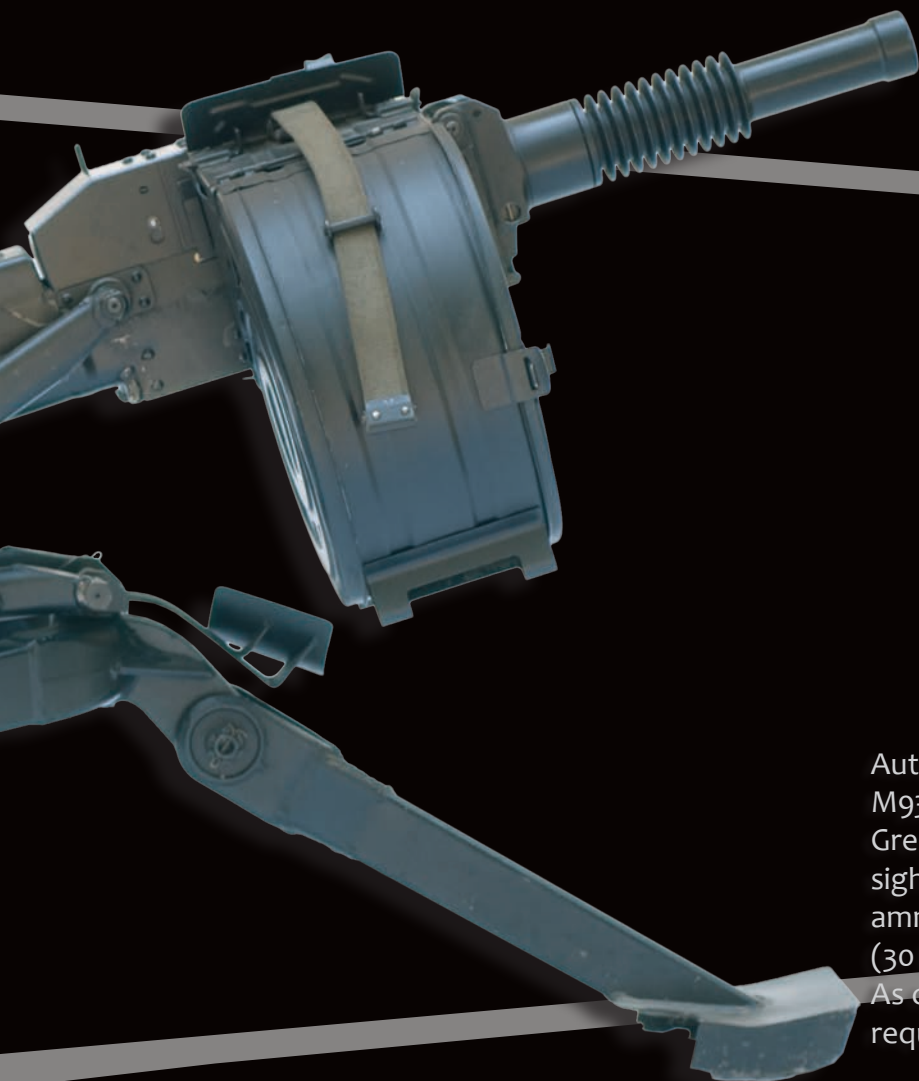
The interior of the barrel is chrome plated.

Automatic Grenade Launcher M93 can only fire bursts, and the rate of fire can be changed.

Automatic Grenade Launcher M93 is loaded from a belt that is placed in the drum. The drum has the capacity of 29 grenades.

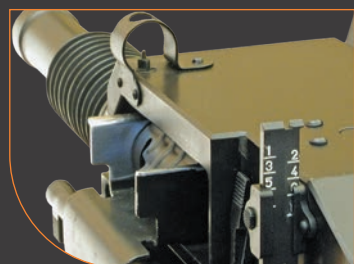
It uses 30 mm HE, HEAT, practice and practice - marker grenades. The design of tripod enables quick change from marching to combat position and vice versa.





Automatic Grenade Launcher M93 set includes: 30 mm Grenade Launcher, mount, sighting device NSBG-1, ammunition boxes with belts (30 links). As option, at customer's request in set can be included

belt filler and rectification sight DR - 30. At customer's request and depending on tactical purpose, Automatic Grenade Launcher M93 is assembled to combat vehicles and helicopters.



Model	C	DC	W	WT	TL	BL	TF	O	LS	MER
Automatic Grenade Launcher 30 mm	30	29	38	14	1305	300	Automatic	Blowback	Inertial	1700

C- Calibre (mm), DC- Drum capacity, W- Weight of weapon with drum (kg), WT- Weight of tripod (kg), TL- Total length (mm), BL- Barrel length (mm), TF- Type of fire, O- Operation, LS- Locking system, MER- Maximum effective range (m)

Underbarrel grenade launcher[®]

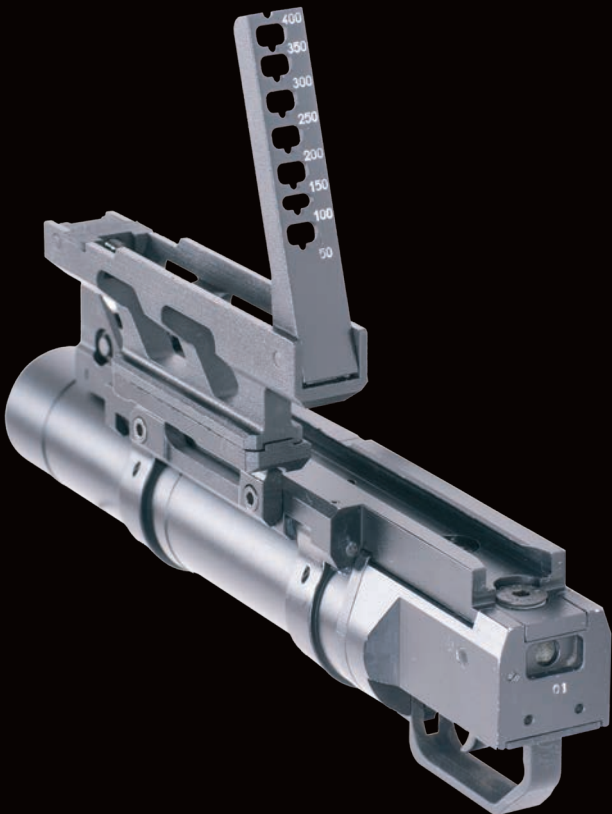
GL M11 40x46 mm

GL M11 40x46 mm is intended for annihilation of live forces, firearms, and unarmoured motor vehicles at the distances from 50 to 400 m by direct firing. It is assembled to M21BS group and Mo5 rifles.

Main features:

- assembled to the Picatinny rail placed on the lower side of the handguard
- barrel interior is chrome plated
- breech loaded
- trigger mechanism is Double Action
- BGP can operate independently from the automatic rifle and then it is delivered with the stock, as an option when an order is placed.

GL M11 40 x46 mm



Model	C	W	TL	BL	TF	SDD
GL M11 40x46 mm	40x46	1.6 / 2.4	315 / 655	235	Single shot	50-400

C- Calibre (mm), W- Weight of weapon, without stock/ with stock (kg), TL-Total length, without stock/ with stock (mm), BL- Barrel length (mm), TF- Type of fire, SDD-Sight division for direct aiming (m)

Underbarrel grenade launcher[®]

BGP-40 mm



BGP-40mm



Underbarrel grenade launcher

Underbarrel Grenade Launcher is intended for neutralization of enemy's live force, firearms and unarmoured vehicles:

- 50 to 350 m direct fire (bottom part of angles on sighting device)
- 200 to 300 m indirect fire (bottom part of angles on sighting device)

Underbarrel Grenade Launcher can accept the following ammunition:

- HE grenade
- HEAT grenades
- incendiary
- smoke
- practice

The design prevents firing from Underbarrel Grenade Launcher when it is not on the rifle, although it functions as a system that is separate from the rifle.

The interior of the barrel is chrome plated. Rubber buffer is set to the rifle to reduce the blow during firing.

In direct firing, aiming is done through iron sights (front and rear).

In indirect aiming, the shooter uses plummet. Underbarrel Grenade Launcher is carried in its holster or on a combat vest (when stripped)

The complete set of the gun includes a carrying bag for 10 grenades.

At customer's request, Underbarrel Grenade Launcher can be adapted to fit the rifles of other manufacturers.

Model	C	W	TL	BL	TF	SDD	SDI
BGP - 40 mm	40	1.5	323	120	Single shot	50-400	200-350
BGP - 40 mm M70	40	1.5	323	120	Single shot	50-400	200-350

C- Calibre (mm), W- Weight of weapon (kg), TL-Total length (mm), BL- Barrel length (mm), TF- Type of fire, SDD-Sight division for direct aiming (m), SDI- Sight division for indirect aiming (m)

Pistols[®]

CZ 999

EZ 9

EZ 9 Compact



pistol EZ 9

PISTOL CZ999

Pistol CZ999 is a semi-automatic gun, functioning on the principle of short recoil of the barrel.

Locking is achieved by vertical oscillation of the barrel, that comes into the hole on the slide.

Pistol is a modern weapon used as service gun and as self-defence gun. Due to excellent design, ergonomics, state-of-the-art technology methods in production, gun is distinguished by precision, accuracy and functionality.

The frame of the pistol is made of aluminium alloy, so a robust gun has small weight. Chrome plated barrel guarantees long service life and easy maintenance.

It functions as a single action or a double action pistol.

Feeding is done from a double-row detachable magazine with the capacity of 10 or 15 rounds.

All controls on the pistol are ambidextrous and they can be used either with the left or the right hand.

The design of the pistols enables the controls to have several functions.

Loaded chamber indicator shows whether a round is in the barrel.

Sights are square, with white dots and they provide easier aiming when the visibility is low.

PISTOL EZ9

The basic design for pistol EZ9 is Pistol CZ999.

Additional characteristics are a mounted rail, enabling the assembly of all optical and electronic devices and open-type hammer.

PISTOL EZ9 Compact

PISTOL EZ9 Compact is a version of standard pistol EZ 9 with the barrel that is shorter by 10mm.

All other characteristics, except the ones regarding the barrel length (length of the slide and the pistol, weight) are identical to the characteristics of standard models.



pistol CZ 999



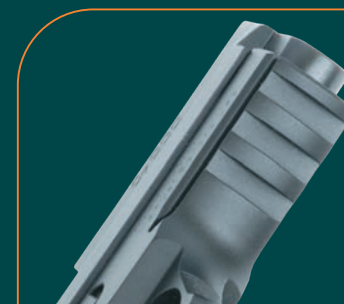
ambidextrous controls

pistol CZ 999



loaded chamber indicator

pistol EZ 9 Compact



mounted rail



open-type hammer

Model	C	MC	W	TL	BL	H
CZ 999	9 x 19	15 / 10	0.94	198	108	140
EZ 9	9 x 19	15 / 10	0.95	198	108	140
EZ 9 Compact	9 x 19	15 / 10	0.90	188	98	140

C- Calibre (mm), **MC**- Magazine capacity, **W**- Weight of weapon (kg), **TL**- Total length (mm), **BL**- Barrel length (mm), **H**- Height (mm)



Zastava
a r m s

military guns catalogue[®]

Zastava oruzje AD

Kosovska 4

34000 Kragujevac

Serbia

phone: +381 34 301 137

fax: +381 34 335 349

e-mail: office@zastava-arms.rs

www.zastava-arms.rs

Zastava arms Export-Import

Terazije 27/3rd floor

11000 Beograd

Serbia

phone: +381 11 3220 154

fax: +381 11 3224 679

e-mail: impex@zastava-arms.rs